

ILC Apprentice II Daylight Saving Time (DST) Adjustment Programming

The Apprentice II controller has the ability to adjust the programming for the week and month for the start of DST and end of DST. This can be done with the onboard keypad built on the controller as shown in Figure 1. Table 1 provides the Keystroke functions and the Programming procedure to make the adjustments to the panel.

How to Adjust Day Light Savings Settings

The ILC Apprentice II controller allows you to adjust the start and end date settings for Day Light Savings Time. The times are adjustable for any week in any month.

1. From the Home screen, press ► EDIT, then press ▼ twice.
2. From the main menu, press ► SET TIMES.
3. From the Set Times menu, press ► DAYLIGHT SAVINGS.
4. When the Day Light Savings screen appears, press ► START DATE.
5. When the Start Date screen appears, press ► WEEK then press ▲ or ▼ until the required week appears.
6. Press ► MONTH then press ▲ or ▼ until the required month appears.
7. Press ► EXIT then press ► END DATE.
8. When the End Date screen appears, press ► WEEK then press ▲ or ▼ until the required week appears.
9. Press ► MONTH then press ▲ or ▼ until the required month appears.
10. Press ► EXIT 3 times to return to the Home screen.

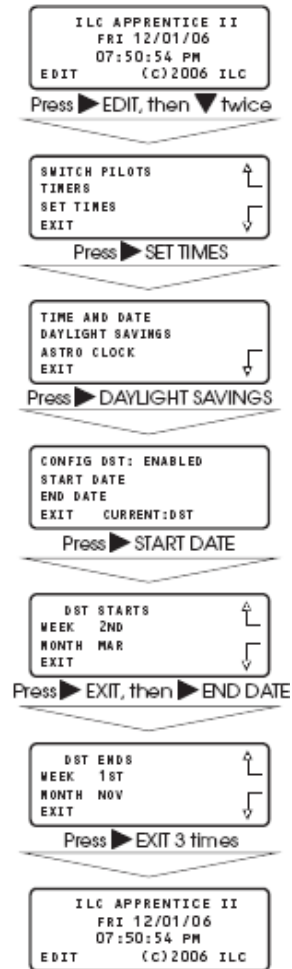


Table 1

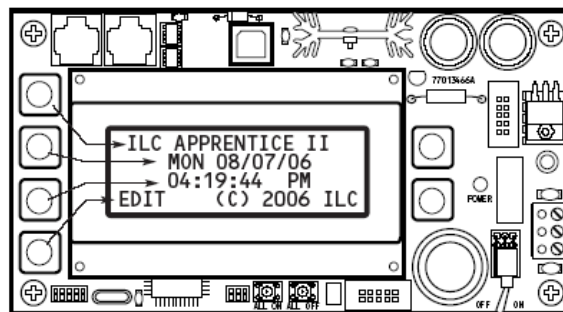


Figure 1

Below is the DST Adjustment procedure using software:

1. Start the ILC Apprentice II Pro program and open the program file for the panel(s) being adjusted. The Home screen of the program will be similar to Figure 1.
2. Click on Edit and then Set Times and then Daylight Saving Time. Figure 2 shows the DST configuration screen.
3. Adjust the DST Start setting to: 2nd Sunday of March
4. Adjust the DST Ends setting to: 1st Sunday of November
5. Click of **F**ile and then Save File.
6. Connect and download the settings to the controller.

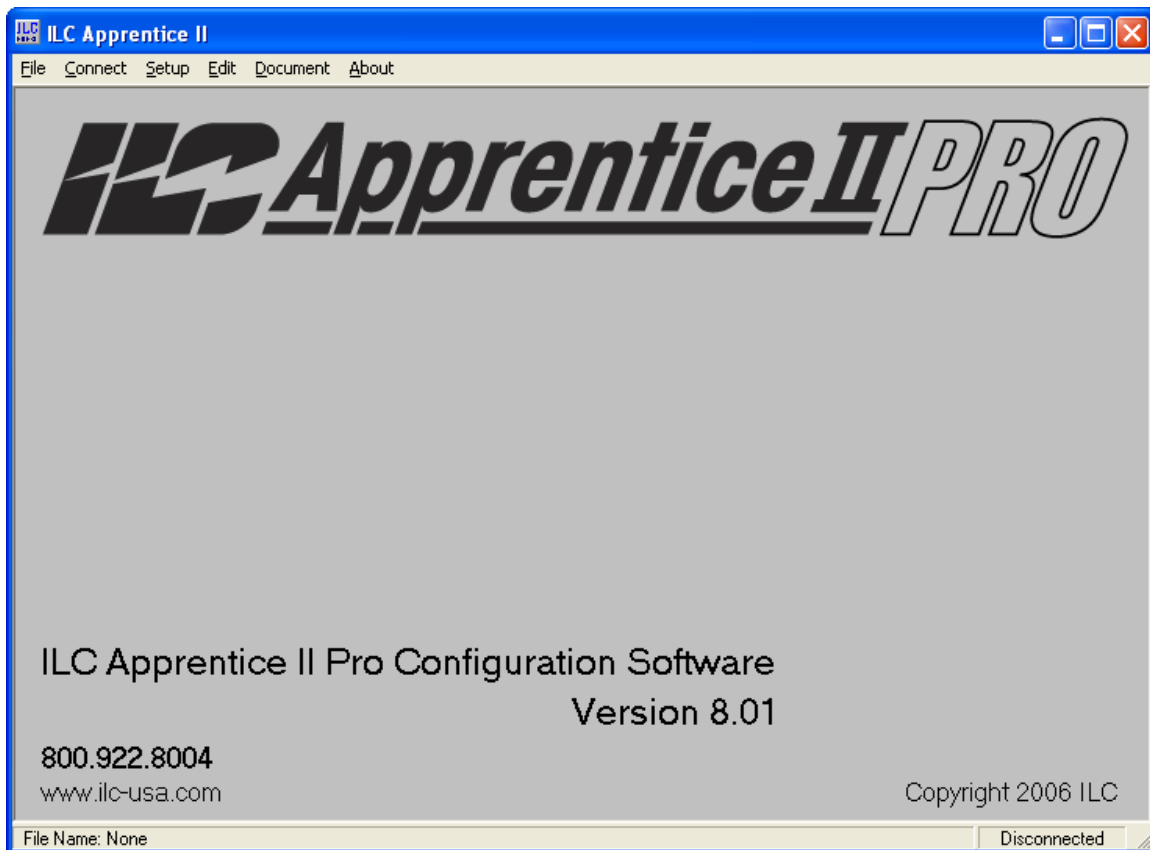


Figure 1 Home Screen

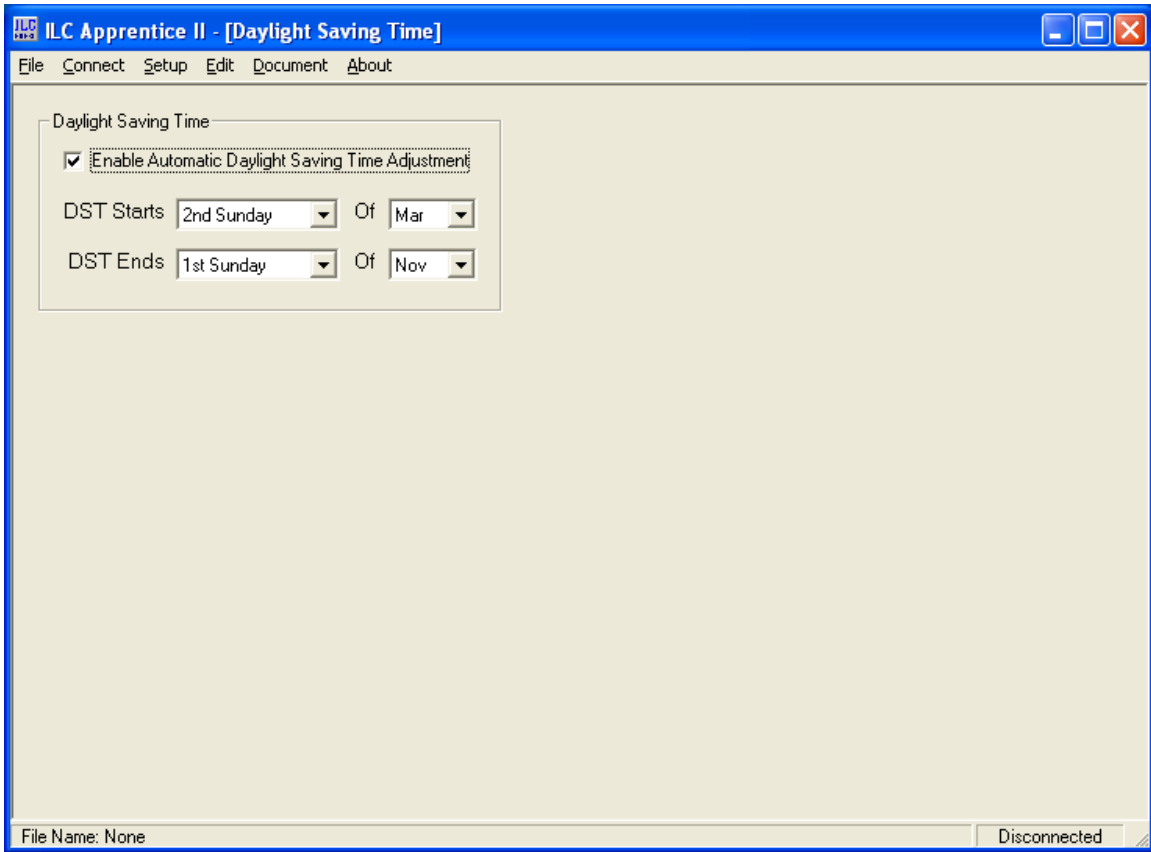


Figure 2 Configure Screen