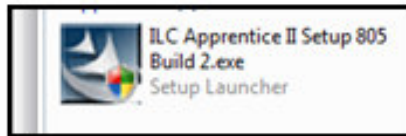


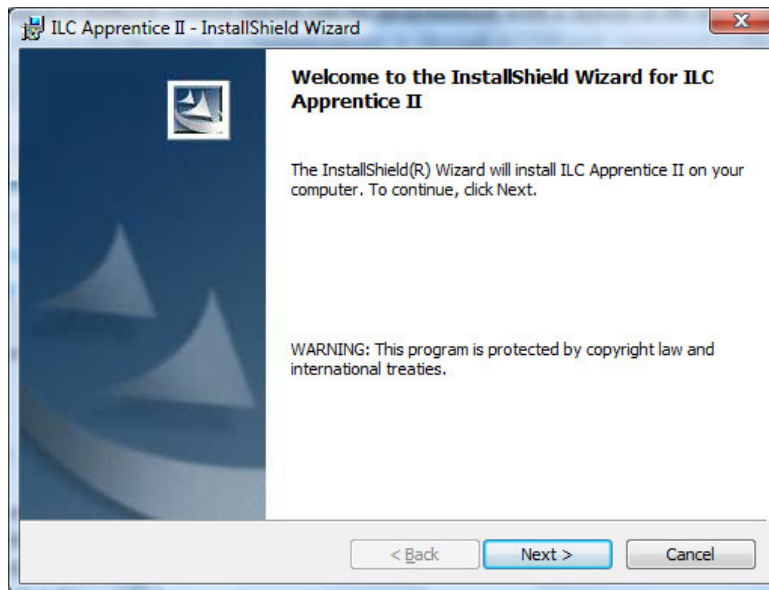
## Apprentice II Pro Software Installation

Apprentice II lighting control panels can be programmed with a PC or a laptop using the Apprentice II Pro Software. Communications is through a USB port connected to the master panel. For communications to work properly, the hardware drivers must be loaded properly. Follow the step-by-step procedures below. *Note: Do not connect to the panel until instructed to.*

1. Install the software by browsing the installation disk and “Run” the executable as shown below.

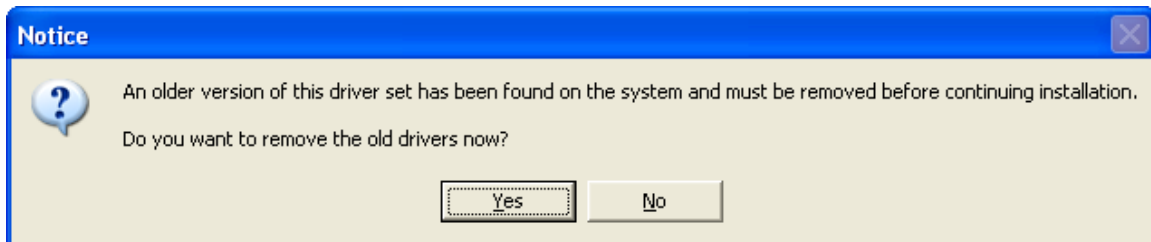
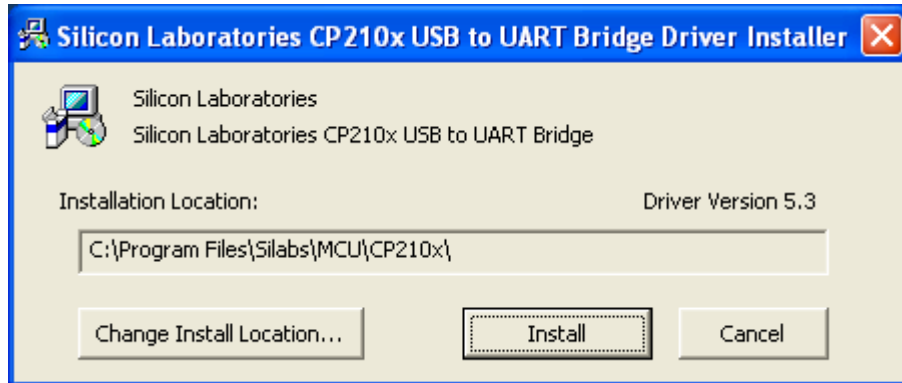


2. After the program starts, click “Next” to continue as shown below.



3. On the next screen click on the “Install” button.
4. After the installation is completed press “Finish”

5. The driver installer program will open as shown. Select “Install” to load the drivers required for communications. If other drivers have been installed previously, you may be prompted to replace an older version as shown below.



6. Connect the PC to the panel via a USB A/B cable and the device will load in to your Device Manager.