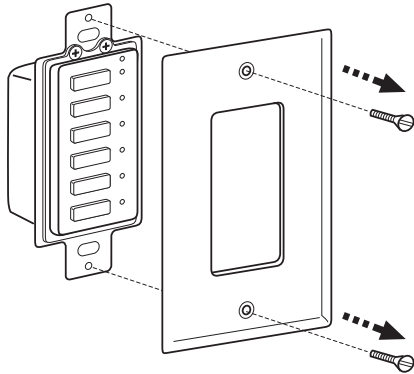


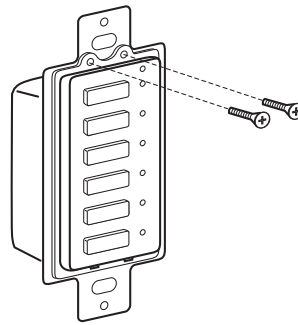
LightSync™ G2 Data Line Switch Face Plate Removal and Installation

ILC's LightSync G2 data line switch is designed with a removable faceplate. This faceplate, if required by the facility, is custom laser engraved for switch control identification. The switch may have been shipped without engraving and the faceplate may need to be replaced in the field. Below are the instructions for replacing the faceplate. Note: The switch must remain with the same number of buttons as shipped from the factory.

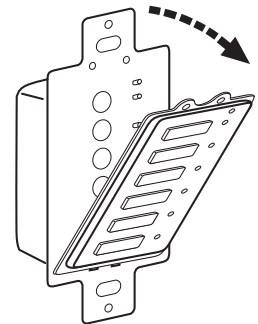
Faceplate Removal and Replacement



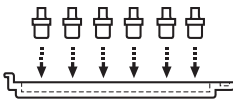
1.) Remove the 2 screws from the switch plate cover, remove cover and set aside.



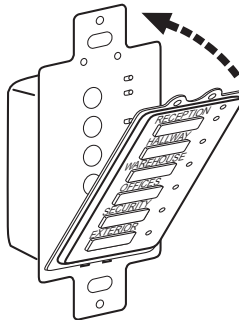
2.) Remove the 2 screws from the top of the switch faceplate, set aside.



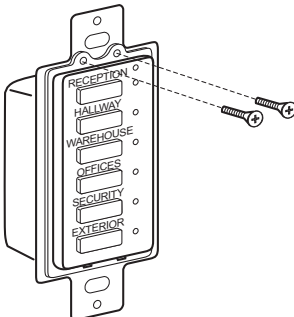
3.) Pivot the faceplate out and remove from switch.



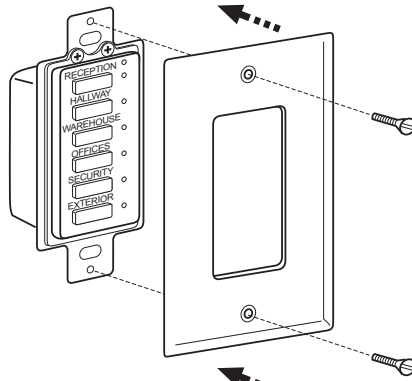
4.) Remove the buttons and install them into the new faceplate while in the horizontal position.



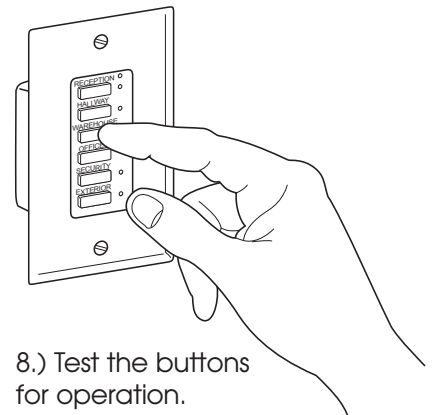
5.) Install the new faceplate while still in the horizontal position. Insert the lower tabs of the faceplate into the switch bracket square holes located on the lower edge and then pivot the assembly up until it's flush with the surface. Hold into place and complete the next step.



6.) Install the 2 screws removed from step 2.



7.) Install the switch plate cover removed in step 1.



8.) Test the buttons for operation.