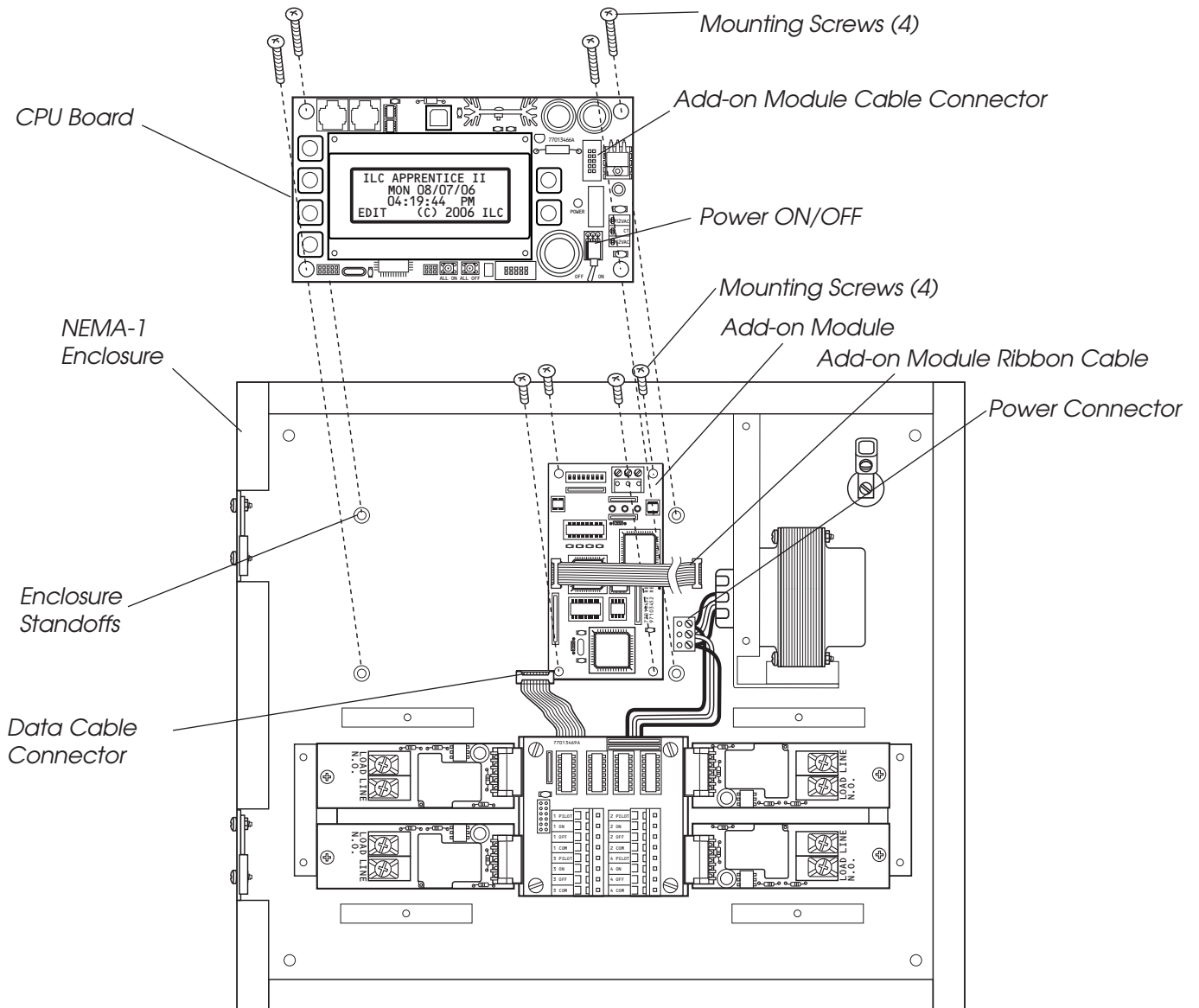


# Apprentice II N2, Modbus, DMX and DTMF Module Installation



## Add-On Module Installation

1. Turn OFF the power switch to the controller.
2. Disconnect the power connector, ribbon cable connector, and any data cable connections to the controller.
3. Remove the 4 mounting screws from the CPU board and set aside.
4. Install the module to the enclosure back with the screw provided. Route the ribbon cable to the right.
5. Replace the CPU board with the screws removed in step 3.
6. Install the module ribbon cable from the module to the CPU connector and any other connectors removed.
7. Turn controller power switch ON and test controller for function.
8. Refer to the Apprentice II User Guide for information specific to add-on board type.