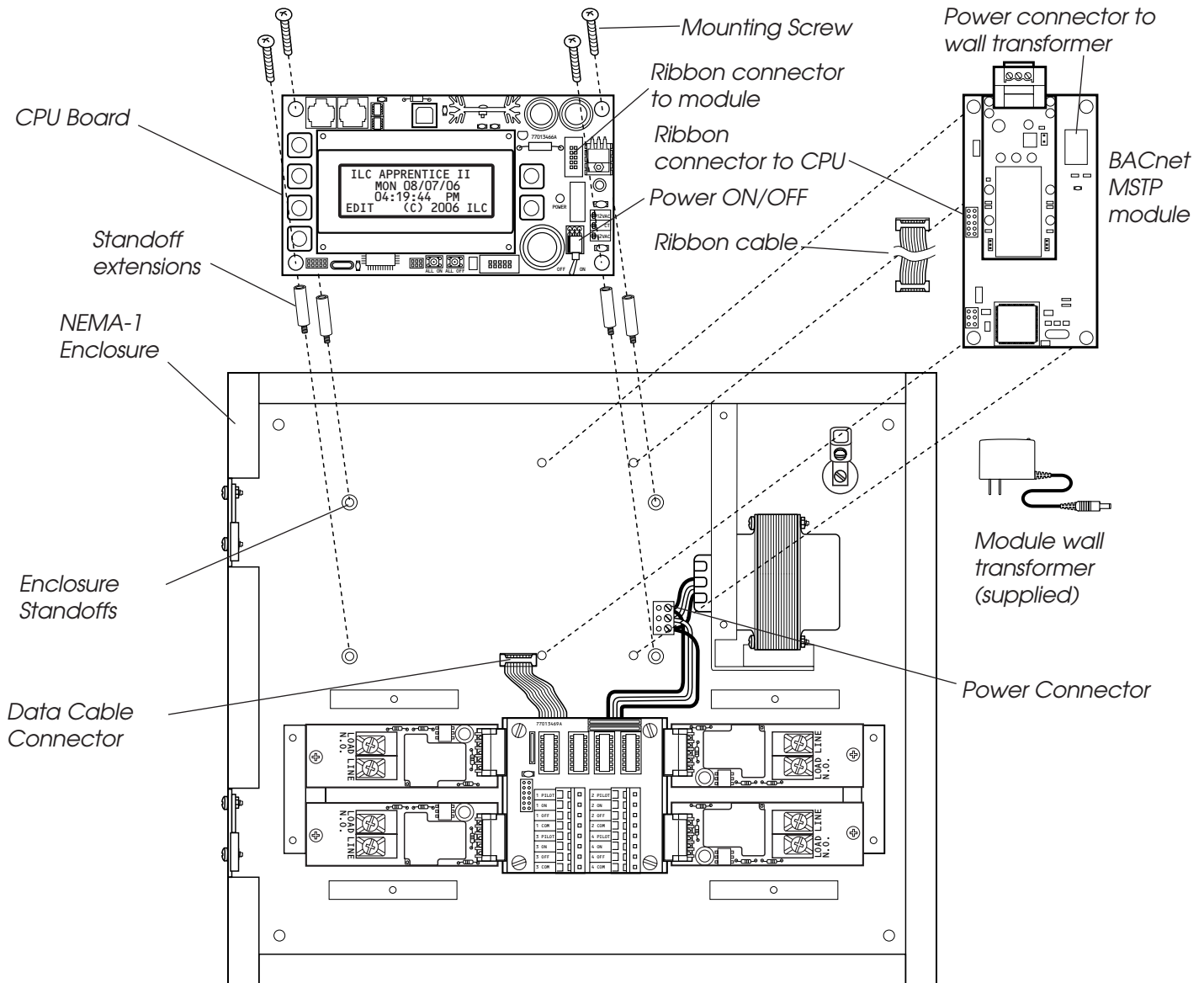


# Apprentice II BACnet IP, BACnet MSTP, and LonWorks Module Installation



## Add-On Board Installation

1. Turn OFF the power switch to the controller if powered.
2. Disconnect the power connector, ribbon cable connector, and any data cable connections to the CPU.
3. Remove the CPU board by removing the 4 mounting screws and set them aside.
4. Install the module onto the enclosure standoffs with the screws provided.  
Attach the green ground wire from the module to one of the mounting screws. Connect the ribbon cable to the module, routing the cable to the right.
5. Install the 4 standoff extensions on to the CPU enclosure standoffs.
6. Install the module ribbon cable from the module connector to the CPU connector.
7. Install the 4 CPU mounting screws and all of the cables removed in step 2.
8. Connect the wall mount power supply provided to the module power connector.