

LightMaster TCP/IP Controller Configuration

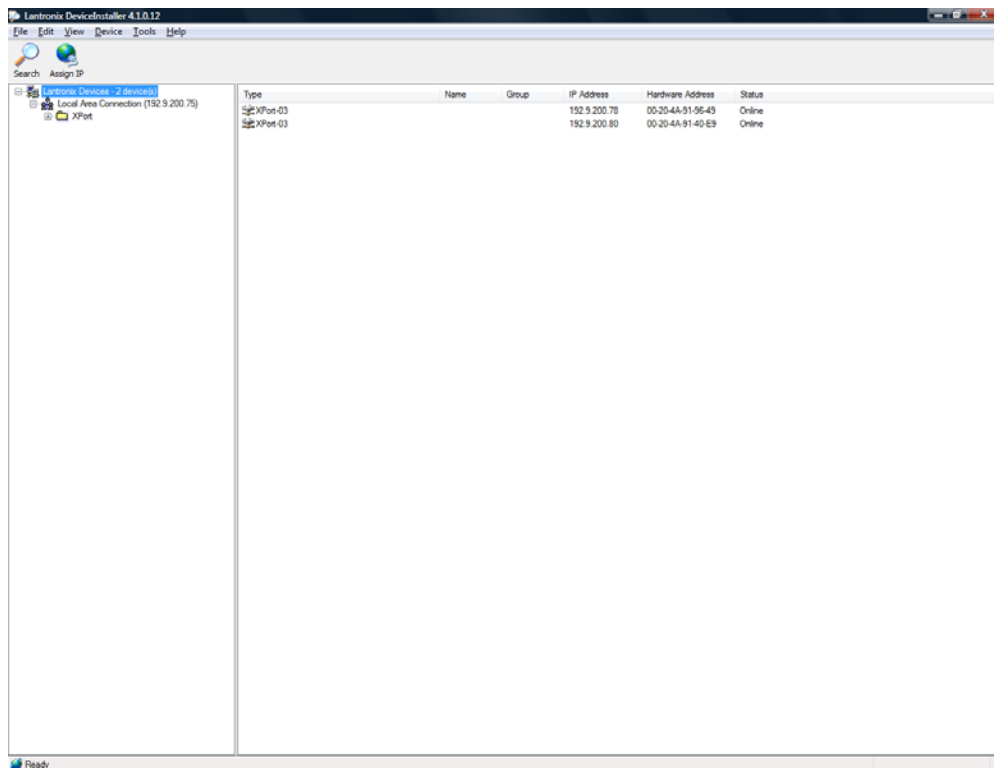
The LightMaster TCP/IP controller uses a Lantronix Xport device incorporated onto the board that allows TCP/IP connectivity to the lighting controller. With this device built onto the controller the LightMaster Pro software can connect to the panel for programming, monitoring, and control anywhere on the LAN (local area network) or WAN (wide area network). As with any device on a network and the use of serial communications certain settings must be configured for the hardware to communicate properly. These settings can be configured at the factory prior to shipping or be adjusted with the procedures below.

Configuration settings

Download the device installer from Lantronix at:

http://ltxfaq.custhelp.com/app/answers/detail/a_id/644

1. Install the utility on your computer. Set your PC's IP address to the same subnet address of the device (example: 192.168.1.25). Connect through an Ethernet hub, switch, or a crossover cable.
2. Start the program and press the "Search" button in the upper left as shown in figure 1. The software should find the LightMaster IP panels devices as shown. The default IP is 192.168.1.24.



INTELLIGENT LIGHTING CONTROLS, INC.

5229 Edina Industrial Boulevard
Minneapolis, Minnesota 55439
Phone 952 829 1900
FAX 952 829 1901
www.ilc-usa.com

Figure 1

3. Select the device that requires adjustment, click on the “Web Configuration” tab, and press “Go” near the address box. It should appear as shown in Figure 2. You can also use a browser once you know the IP address to connect to the device.
4. From the Lantronix main screen select “network”. From this screen set the IP configurations that you desire for that panel. When done press “OK” and then press “Apply Settings”.

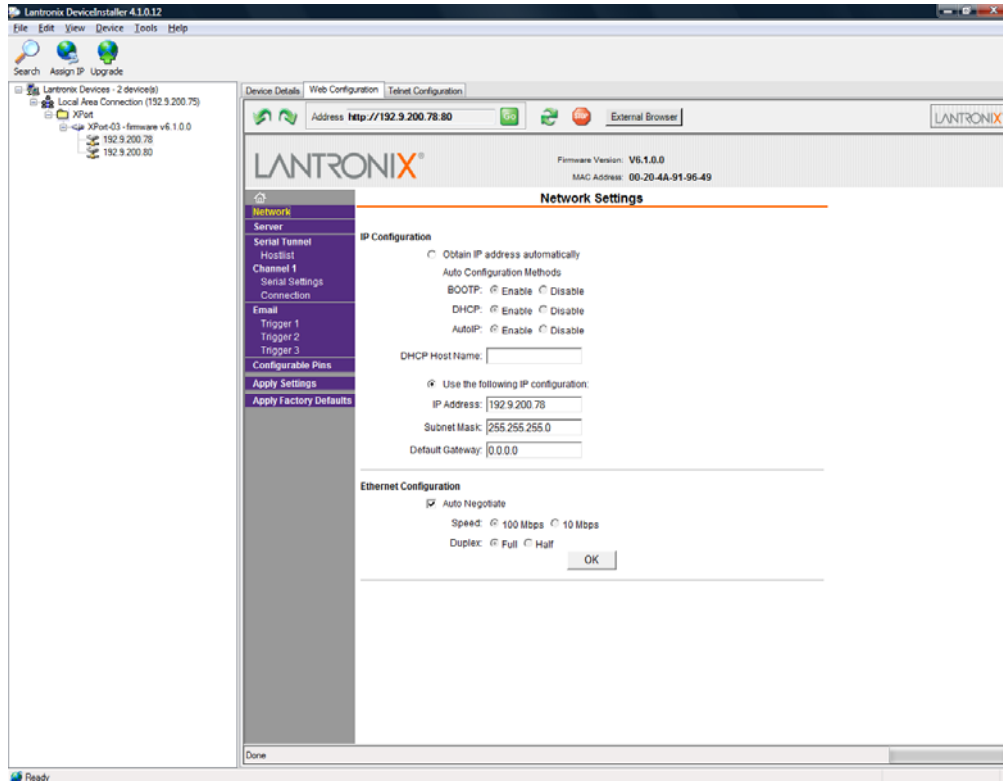


Figure 2

- To select the serial communication settings select “Channel 1 Serial Settings”. Set the Baud Rate to “115,200” for Stand-alone or Standard Network panels or “38,400” for Extended Networks panels. Set the Data bits to “8”, Parity to “None”, Flow Control to “None”, and Stop Bits to “1”. When done press “OK” and then press “Apply Settings”.

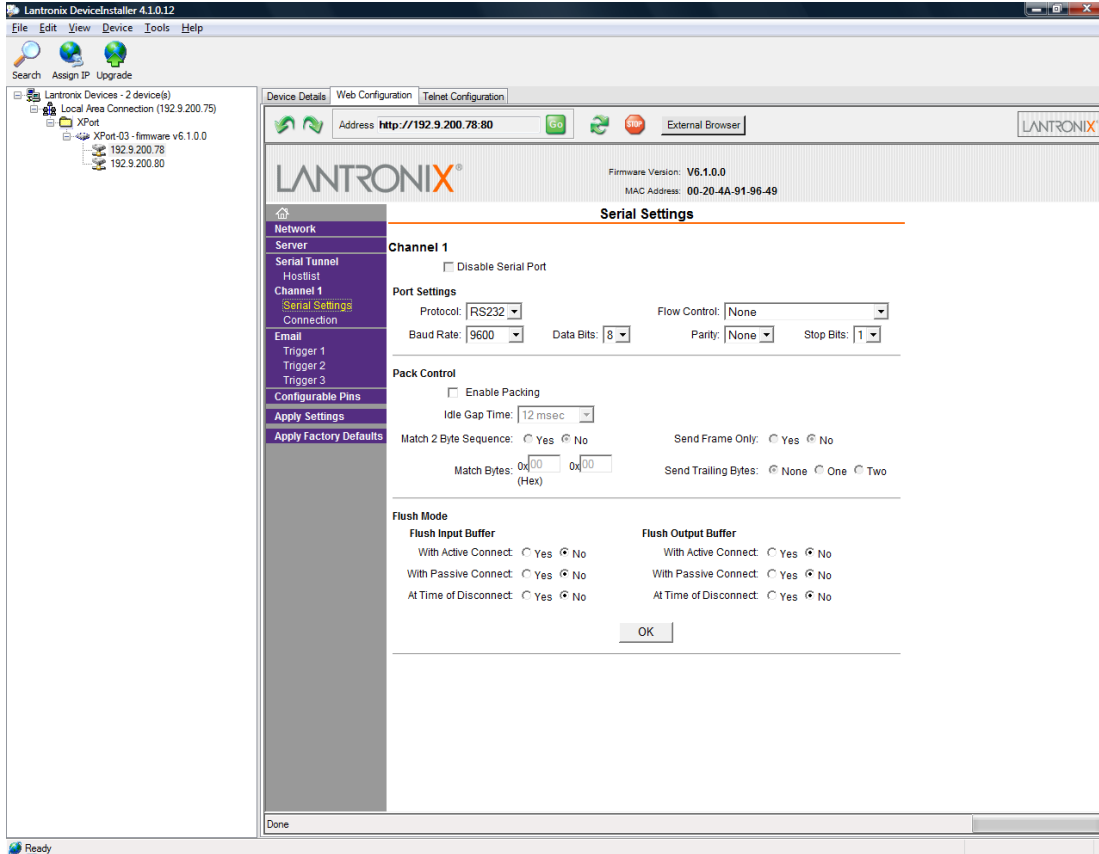


Figure 3

- To Connect to a stand-alone panel using the LightMaster Pro software open the program, select “TCP/IP”, enter the IP address, select the “Node Number”, and press the “Connect to LightMaster” button as shown in Figure 4.

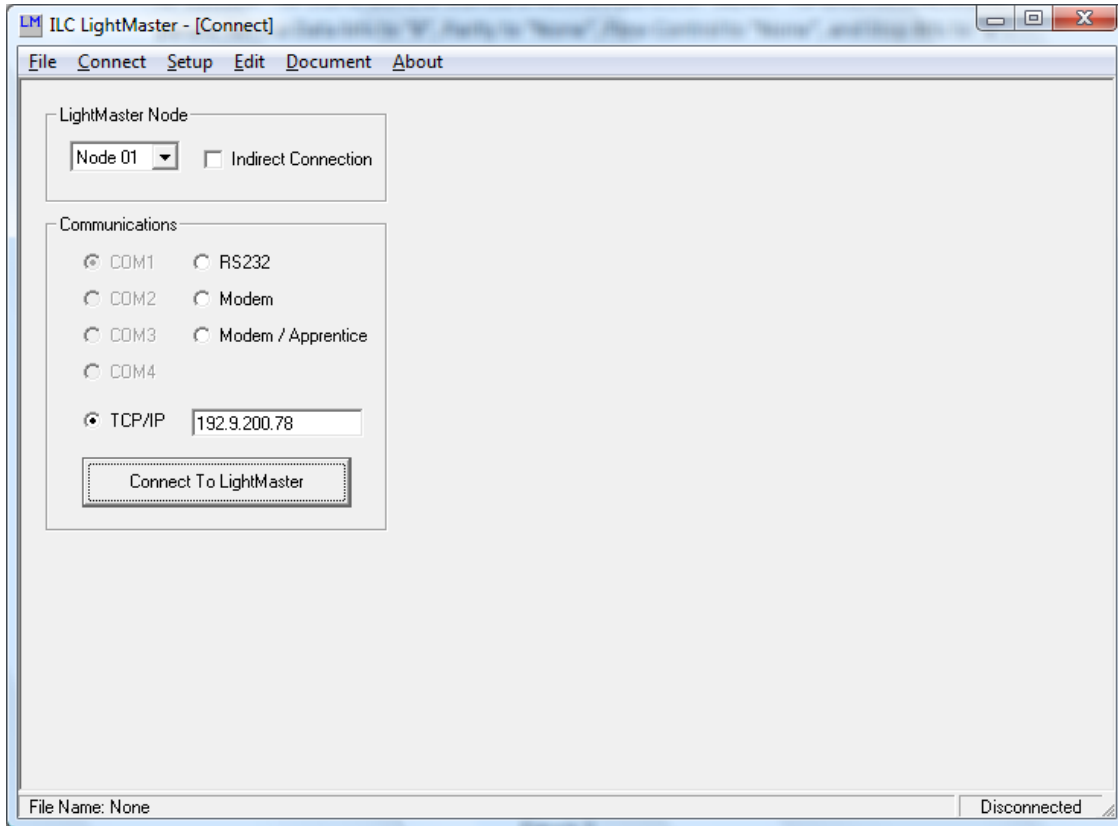


Figure 4

Notes:

- If connecting over the internet and redirecting through a firewall the source port is 10001.
- If using a router with a static address port, set IP address, subnet mask, and gateway IP in the Lantronix network setting.