

## LightLEEDer BACnet IP Module Configurations

The LightLEEDer BACnet IP module is shipped with an IP address of 192.168.1.24 and a device address of 11. These parameters can be modified to fit your facilities needs by following the steps below.

Download the utilities from <http://www.sierramonitor.com/assets/blt6013962b9846529a/FieldServer-Toolbox-1.05aA-Setup.zip> and install them on your PC.

1. Connect the LightLEEDer BACnet IP module (Ethernet Port) and your PC to a TCP/IP connecting network or directly with the use of a cross-over cable. The PC's Ethernet must be able to connect at 10Mbit/s.
2. Set your PC's IP address to the same subnet as the module. Example: 192.168.1.25
3. Run the ping utility (ruiping.exe) until it connects like shown in Figure 1. Typically it should only take a couple minutes to connect. This is to verify the connection to the device only.

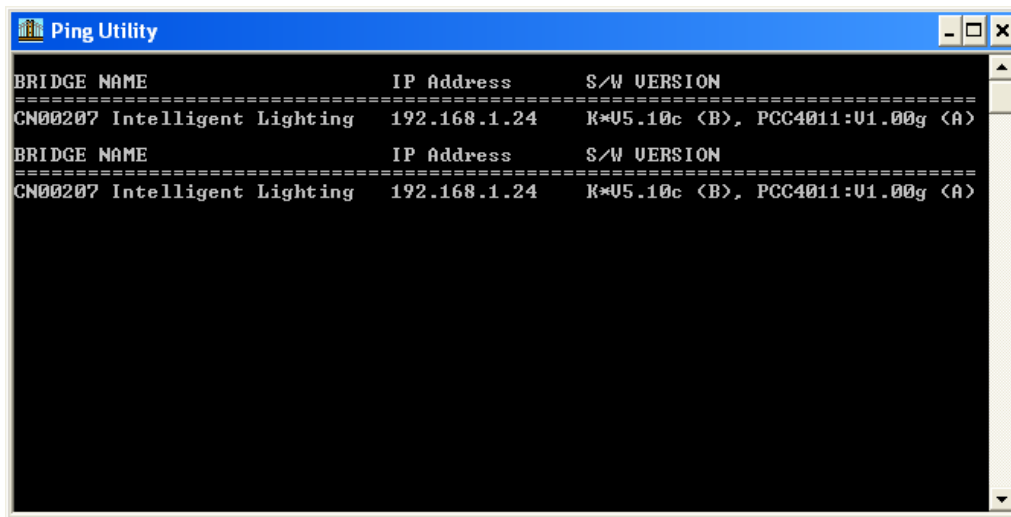


Figure 1 Ping utility screen

4. Start the FieldServer Utility program (ruinet.exe) and connect to the BACnet IP interface. Figure 2 shows the main menu screen of this utility. From this screen you can upload the configuration file to adjust the device address or change the IP address.
  - a. To change the IP address (for configuration settings only) in the module press "1" from the Main Menu to enter the IP configuration screen. From that screen press "1" and enter the required IP address. Turn the power on the LightLEEDer "off" for a few seconds and back "on" for the settings to take effect.



INTELLIGENT LIGHTING CONTROLS, INC.

5229 Edina Industrial Boulevard  
Minneapolis, Minnesota 55439  
Phone 952 829 1900  
FAX 952 829 1901  
[www.ilc-usa.com](http://www.ilc-usa.com)

- b. To change the device address in the module press “U” from the Main Menu to enter the Upload Configuration from FieldServer screen. Press “U” to start the upload (a upload screen will show the progress of the transfer). See figure 3. Open the downloaded config.csv with Microsoft Excel and adjust the device address area (server side node ID) as shown in figure 4 to the address required. Save the configuration file in the same format and close the Excel program. From the Main Menu of the ruinet program select “D” to enter the Download Configuration to FieldServer screen. Press “D” to start the download. Turn the power “off” to the module for a few seconds and back “on” for the settings to take effect.

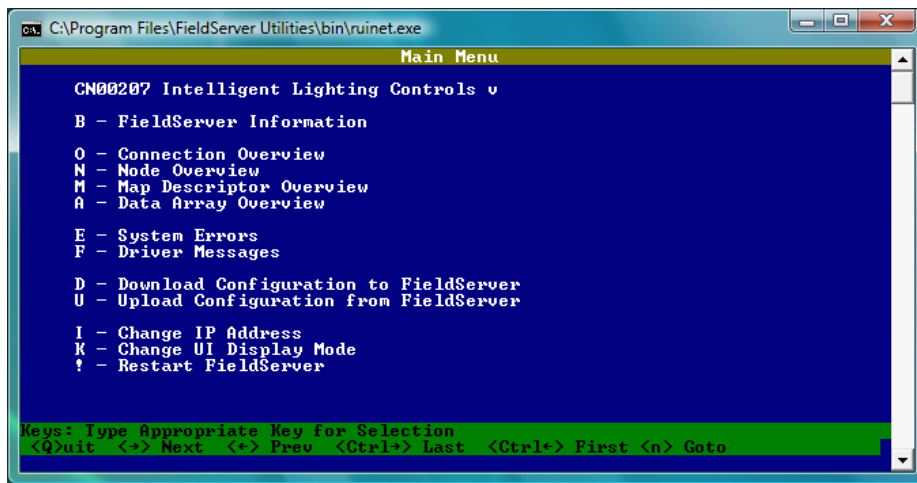


Figure 2 Main Screen

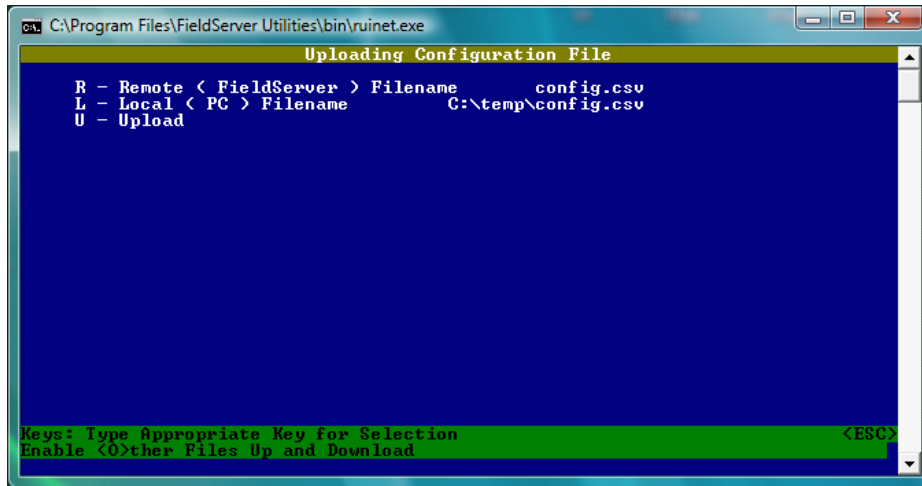


Figure 3 Upload Screen

33	//
34	// Common Information
35	//
36	
37	Bridge
38	Title System_Node_Id
39	CN00205 11
40	
90	//=====
91	//
92	// Server Side Nodes
93	//
94	
95	Nodes
96	Node_No Node_ID Protocol
97	Virtual_Bd 11 Bacnet_MSTP
98	
99	//=====
100	//
101	// Server Side Man Descriptors

Figure 4 Device address locations in config.csv file.