

## LightLEEDer TCP/IP Controller Configuration

The LightLEEDer TCP/IP controller uses a Lantronix Xport device incorporated onto the board that allows TCP/IP connectivity to the lighting controller. With this device built onto the controller the LightLEEDer Pro software can connect to the panel for programming, monitoring, and control anywhere on the LAN (local area network) or WAN (wide area network). As with any device on a network and the use of serial communications certain settings must be configured for the hardware to communicate properly. These settings can be configured at the factory prior to shipping or be adjusted with the procedures below.

### Configuration settings

Download the Device Installer program from Lantronix at:

[http://ltxfaq.custhelp.com/app/answers/detail/a\\_id/644](http://ltxfaq.custhelp.com/app/answers/detail/a_id/644)

1. Install the utility on your computer. Set your PC's IP address to the same subnet address of the device (example: 192.168.1.25). Connect through an ethernet hub, switch, or a crossover cable.
2. Start the program and press the "Search" button in the upper left as shown in figure 1. The software should find the LightLEEDer IP panels devices as shown. The default IP is 192.168.1.24.

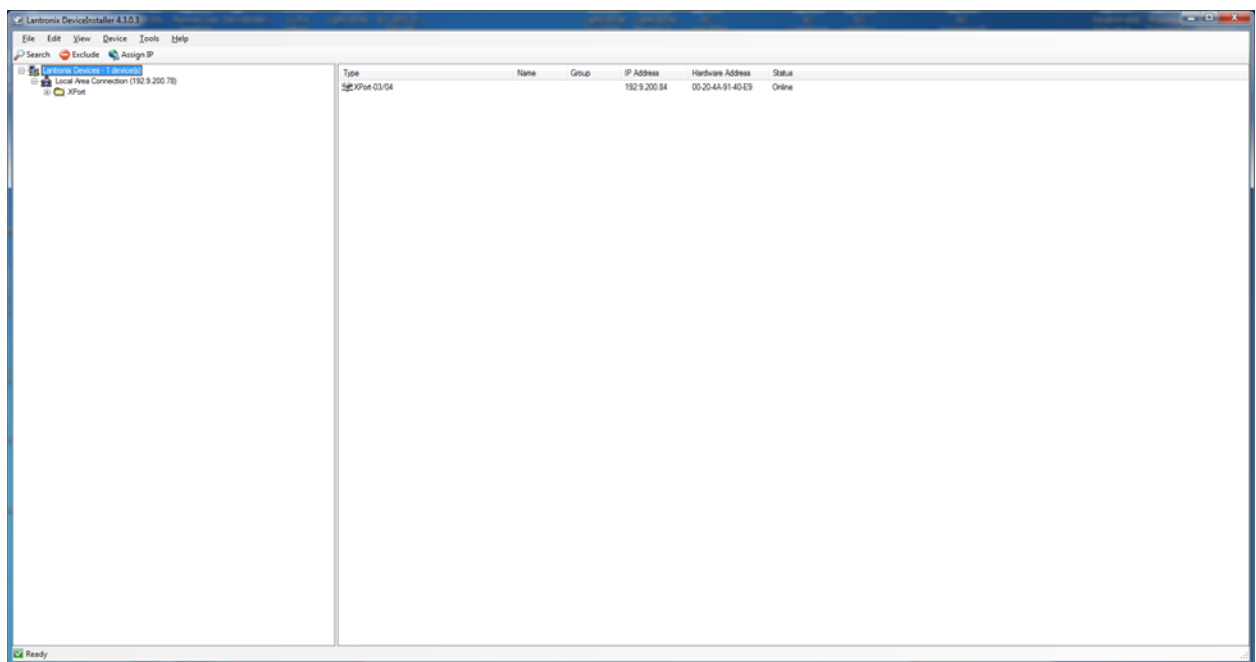


Figure 1

- Expand the tree in the left screen for the device that requires adjustment, click on the “Web Configuration” tab, and press the green arrow button “Navigate To:” on the right side of the device window. When the Windows Security prompt appears, just click “OK” to enter the configuration manager. It should appear as shown in Figure 2. You can also use a browser once you know the IP address to connect to the device.
- From the Lantronix main screen select “network”. From this screen set the IP configurations that you desire for that panel. When done press “OK” and then press “Apply Settings”.

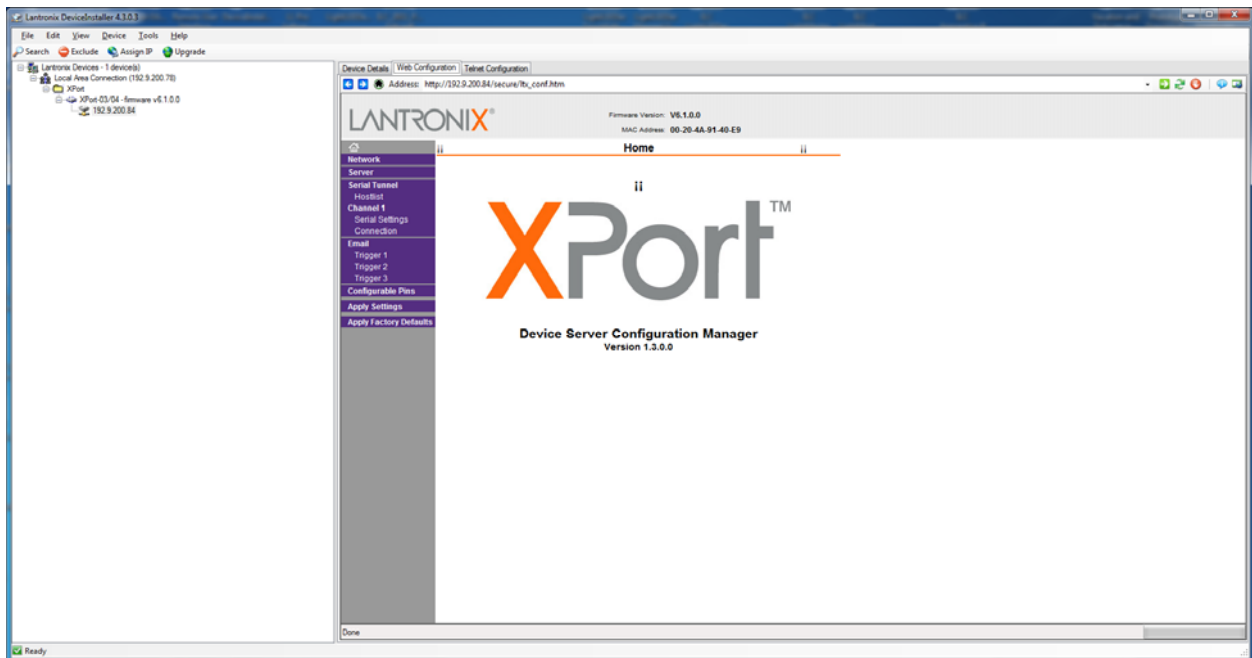


Figure 2

- To set the serial communication settings select “Channel 1 Serial Settings”. Set the Baud Rate to “38,400”, Data Bits to “8”, Parity to “None”, Flow Control to “None”, and Stop Bits to “1”. When done press “OK” and then press “Apply Settings”.

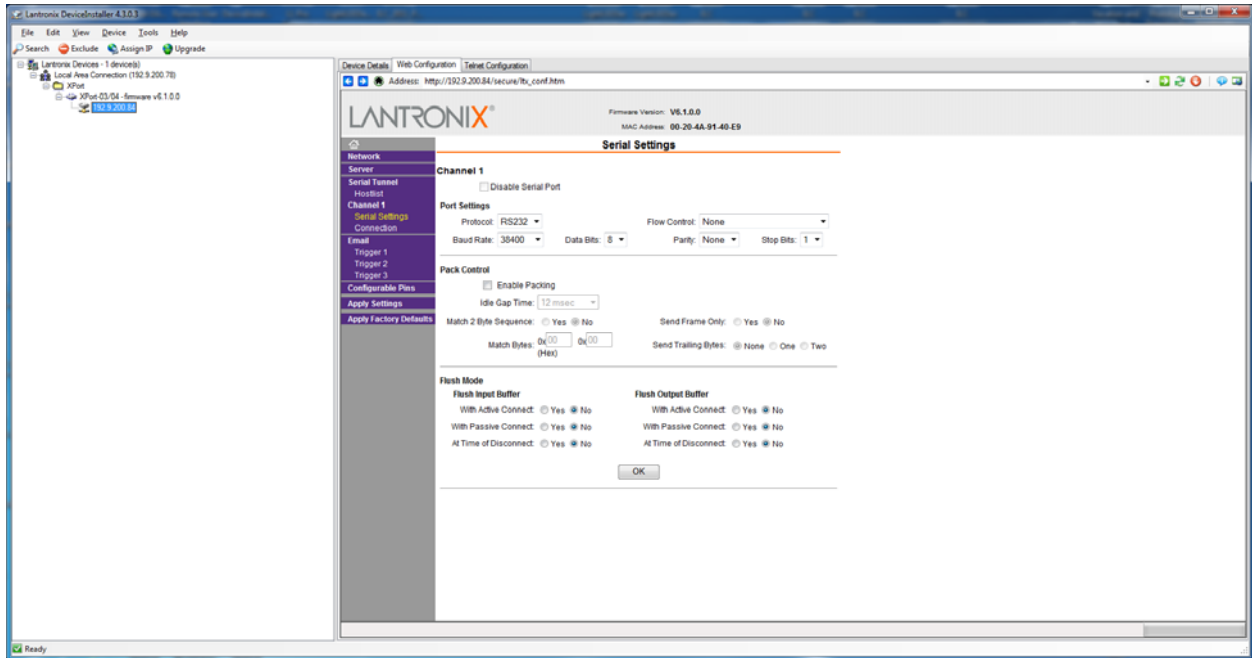


Figure 3

- To connect to the panel(s) using the LightLEEDer Pro software open the program, from the communications screen, select “TCP/IP”, enter the IP address, and press the “Connect to LightLEEDer Network” button as shown in Figure 4.

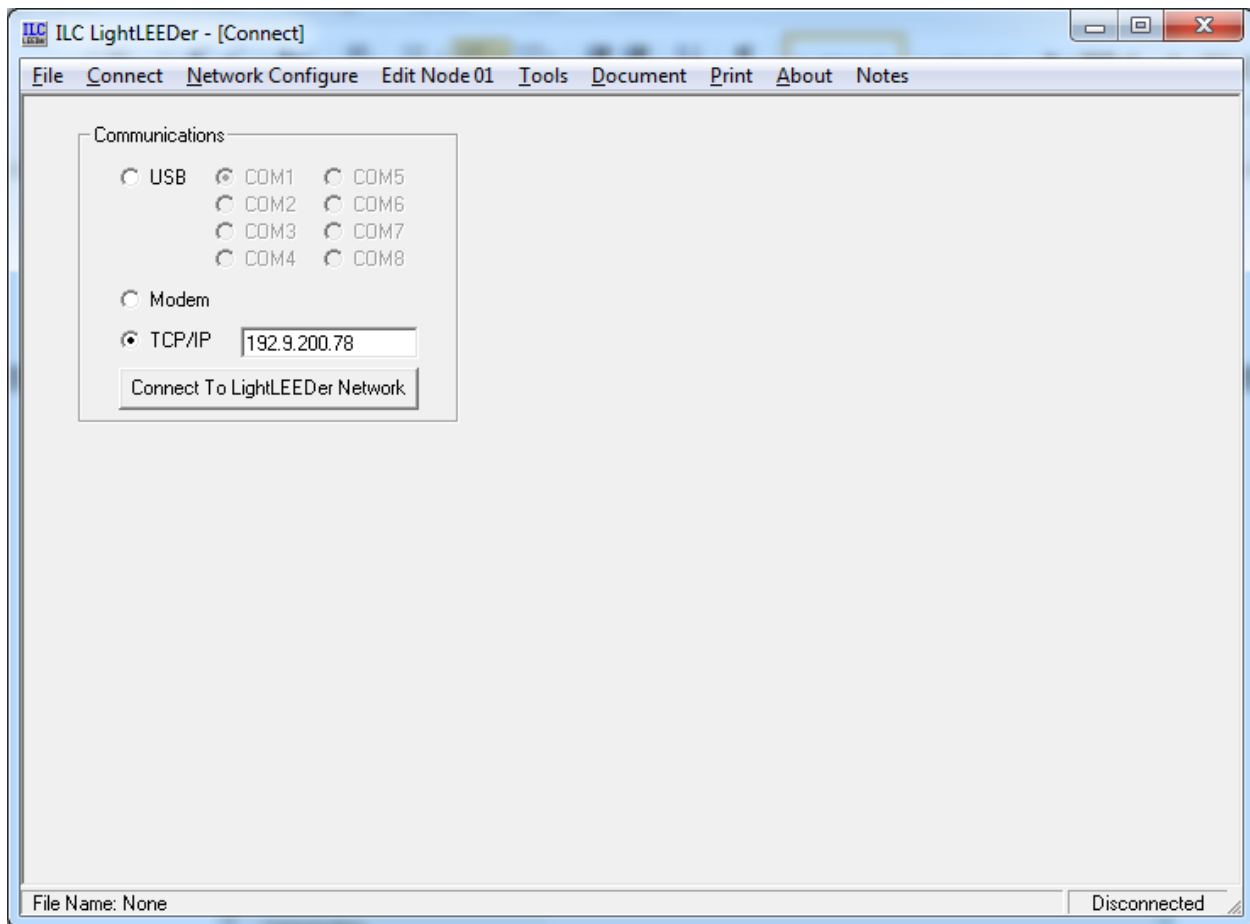


Figure 4

Notes:

- If connecting over the internet and redirecting through a firewall the source port is 10001.
- If using a router with a static address port, set IP address, subnet mask, and gateway IP in the Lantronix network setting.