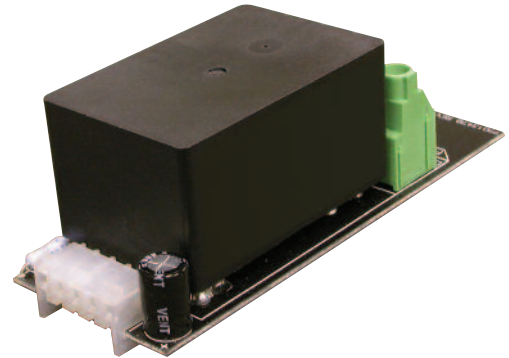


2-Pole Relay Board

- 2 pole lighting control relay
- Easy installation
- Controls 208/240/480 circuits
- UL listed
- Available with Normally Open (N.O.) contacts
- Mounts directly in panel
- Requires only one space



Overview

The 2 Pole Relay Board mounts directly in Apprentice II lighting control panels and is designed to control 208/240/480 VAC loads. This two pole relay assembly mounts directly in place of the Softcross™ single pole relay board. The relays are electrically held, are available in N.O. (normally open) contacts, and can be mixed in the lighting controller with Softcross™ relay boards. These relay boards are easily mounted in the Apprentice II panel with a push-on connector interface and a single screw.

Features

General Information

- UL Listed
- Mounts in the panel with a push-on connector and a single screw.

High Voltage Characteristics

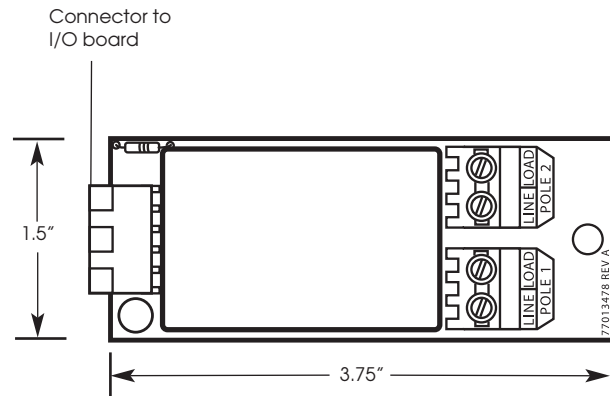
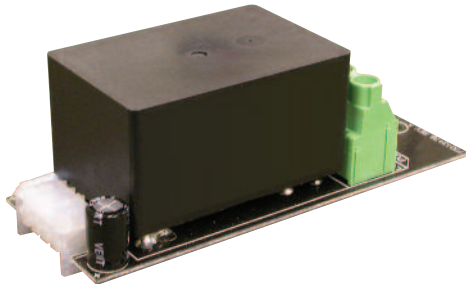
- Contacts are electrically held DPST
- NO (Normally Open) contacts
- Screw type terminals handle #10AWG solid or stranded copper wire



INTELLIGENT LIGHTING
CONTROLS, INC.

5229 Edina Industrial Boulevard
Minneapolis, Minnesota 55439
Phone 952 829 1900
FAX 952 829 1901
1-800-922-8004
www.ilc-usa.com

Dimensions



Specifications

Physical:

- 3.75"W x 1.5"H x 1.3"D
- Plug-in module designed for mounting directly to Apprentice II I/O board(s)

Electrical:

- 20 amp ballast
- 20 amp resistive
- 20 amp general
- 50 to 60 Hz
- Up to 277 VAC per pole controlling 208/240/480 VAC circuits

Operating Environment:

- Location Interior space
- Operating Temperature 0° to 40° C
- Relative Humidity 10% to 90% Non-condensing
- Atmosphere Non-explosive, Non-corrosive
- Vibration Stationary application NEMA Level A

Certifications:

- UL
- FCC approval for commercial and residential use
- California Title 24

NOTE: The High Voltage barrier in the panel needs to be replaced with the installation of the 2 pole relay. Order part number 78001567 for the 4 size panel or 78001568 for the 8 and 16 size.

How to Order

Ordering a **2 Pole Relay Board**

Order No. 2PR (sample)

2PR



INTELLIGENT LIGHTING
CONTROLS, INC.

5229 Edina Industrial Boulevard
Minneapolis, Minnesota 55439
Phone 952 829 1900
FAX 952 829 1901
1-800-922-8004
www.ilc-usa.com