

ILC LightMaster SNET Controllers Daylight Saving Time Options

The LightMaster controller does not have the ability to be adjusted in the programming for the DST. This change can only be done with a new version of firmware. With the new firmware it will automatically adjust the time ahead on the second Sunday of March and back on the first Sunday of November. There will be a fee associated with the firmware update (no charge for firmware on controllers still under warranty) to cover engineering, documentation, shipping, and handling. Contact ILC, your electrical distributor, or your local ILC representative for details.

Another option is to disable the current DST settings and manually adjust the time in each panel ahead 1 hour in the spring and back 1 hour in the fall. Note: This only applies to normal timers only. If Astro Timers are used the firmware must be upgraded. Figure 1 shows the steps to disable DST.

3.12 How to Enable and Disable Day Light Savings

CONCEPTS AND PARAMETERS

The LightMaster is defaulted for automatic change over between standard and day light savings time. If the controller is in an area that doesn't observe day light savings you can disable this feature.

This operation is performed at the system level.

SAMPLE OPERATION:

Disable Automatic Day Light Savings Change Over

1. From the Network Home screen, press ► EDIT, when the Network menu appears, press ► EDIT SYSTEM, then press ▼.
2. From the main menu, press ► SET TIMES.
3. From the Set Times menu, press ► DAYLIGHT SAVINGS.
4. When the Day Light Savings screen appears, press ► DISABLE.
5. Press ► EXIT 4 times to return to the Home screen.

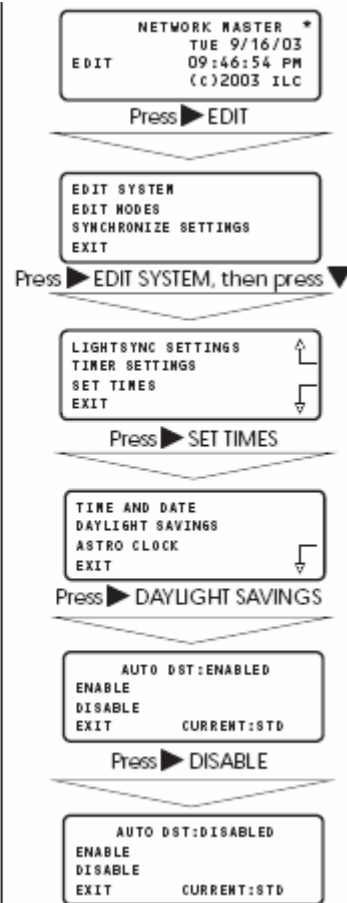


Figure 1

Below is the DST Disable procedure using software:

1. Start the LightMaster SNET Pro program and open the file used at the facility. The Home screen will be similar to the screen in Figure 1.
2. Click on the Edit and then select Set Times and then Daylight Savings Time from the pull down menu to bring you to the screen shown in Figure 2.
3. Click on the Daylight savings Time auto adjust box to remove the check in the box.
4. Click on the File and then Save to save the settings to the working file.
5. The file can now be downloaded to the controllers.



Figure 1

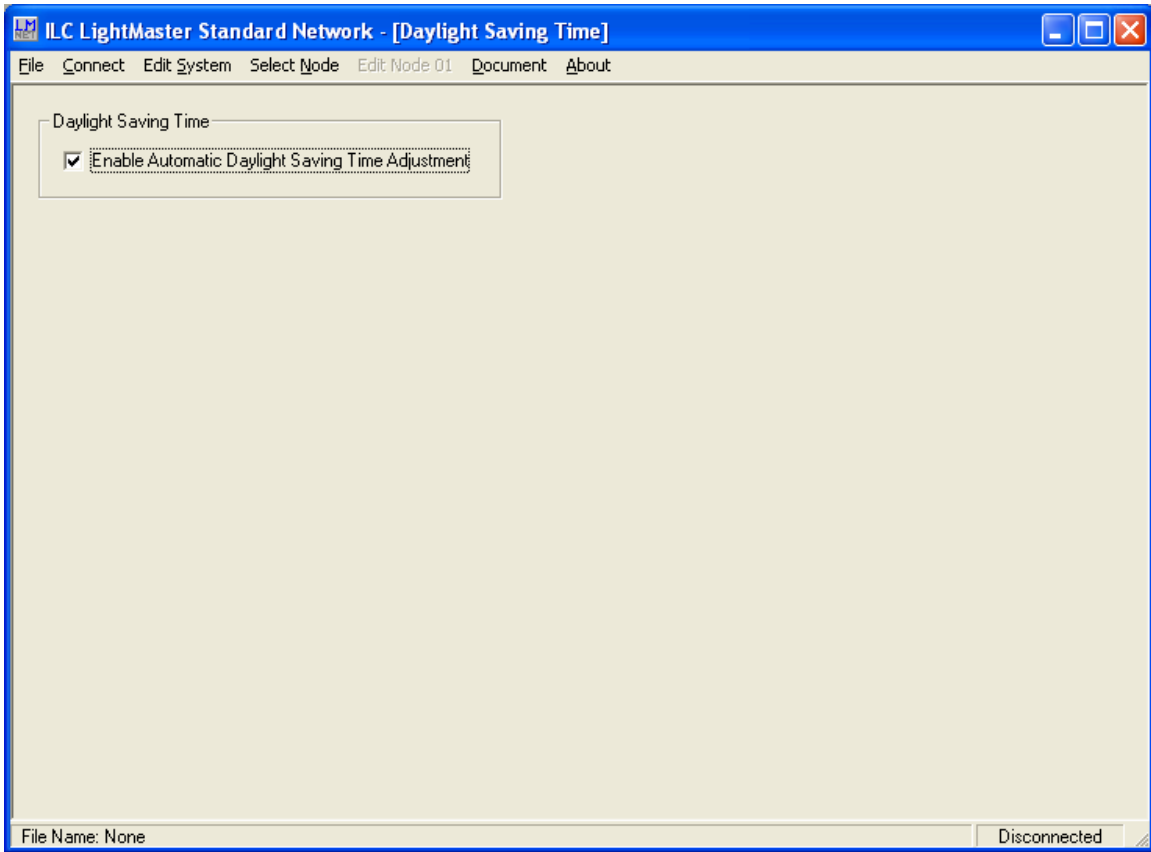


Figure 2 DST Screen