

ILC Quanta Elite and LightMaster Basic PC Daylight Saving Time Options

The Quanta Elite and the LightMaster Basic PC controller do not have the ability to be adjusted in the programming for the DST. This change can only be done with a new version of firmware. With the new firmware it will be able to automatically adjust the time ahead on the second Sunday of March and back on the first Sunday of November. There will be a fee associated with the firmware update to cover engineering, documentation, shipping, and handling. Contact ILC, your electrical distributor, or your local ILC representative for details.

Another option is to disable the current DST settings and manually adjust the time in each panel ahead in the spring and back in the fall. Note: This only applies to normal timers only. If Astro Timers are used the firmware must be upgraded. Figure 3.13 show the steps to disable DST using the keypad.

3.19 Daylight Savings Time

Enable or disable automatic Daylight Savings Time adjustments.

WHAT IS IT?

The QUANTA Elite controller supports automatic adjustment of the system clock for Daylight Savings Time. The default is for automatic adjustment between Standard and Daylight Savings on the currently established dates. If the controller is installed in an area where Daylight Savings Time is not implemented, you can disable this feature.

HOW DO I GET THERE?

1. To disable Daylight Savings Time, from the Home screen, press ►EDIT.
2. Then press ▼ 8 times and then ►DAYLIGHT SAVINGS to access the Daylight Savings screen. (See Figure 3.13.)

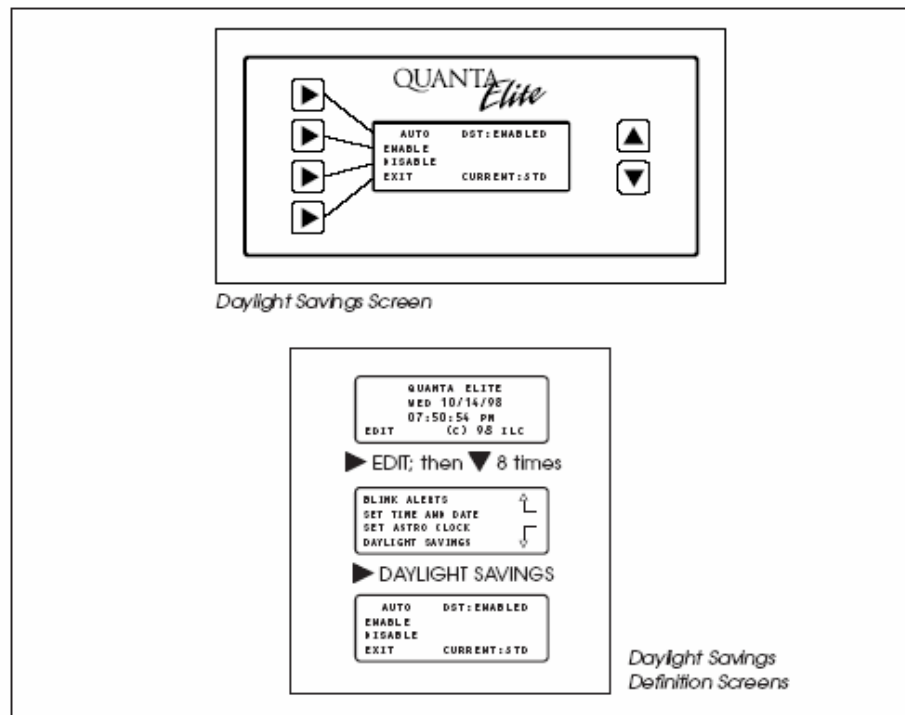


Figure 3.13

Below is the DST Disable procedure using software:

1. Start the QE-LAN Host program. The Home screen will be similar to the screen in Figure 1.
2. Click on the Setup and then select Controllers from the pull down menu to bring you to the configuration screen as shown in Figure 2.
3. Click on the Daylight savings Time auto adjust box to remove the check in the box.
4. Click on the Save button to save the setting to the controllers.

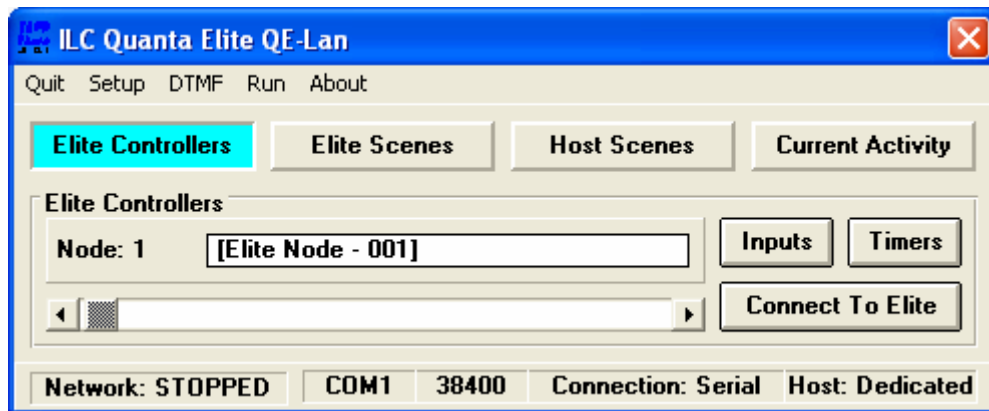


Figure 1 Home Screen

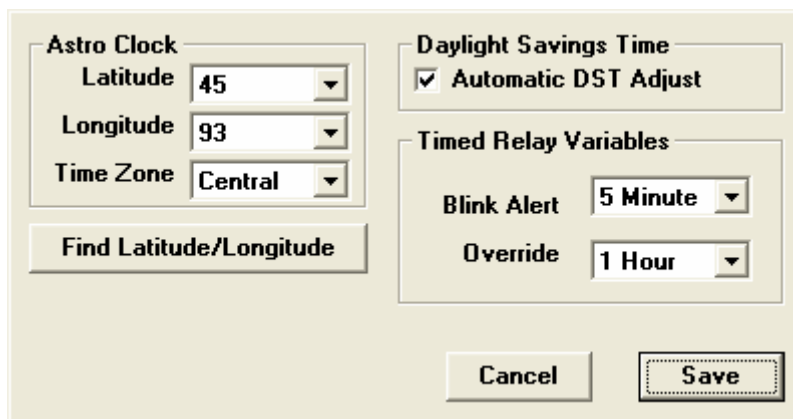


Figure 2 Configuration Screen