

ILC RSX1000/ILC1000 Daylight Saving Time (DST) Adjustment Programming

The RSX1000 controller has the ability to adjust the DST programming. The week/month for the start and end of DST can be adjusted as needed. This can be done through the keypad programming module as shown in Figure 1. Table 1 provides the Keystroke functions and the Programming procedure to make the adjustments to the panel.

Keys/Functions	Procedure	Comments/Examples
INPUT ↑ accesses screen	1. Press INPUT ↑ and TIMER ↓ simultaneously.	The Quanta 1000 default is set with the Daylights savings function disabled.
TIMER ↓ accesses screen		
INPUT ↑ to select the Sunday and month daylight savings begins	2. Press INPUT ↓ or INPUT ↑ to select which Sunday and month daylight savings to begins.	Example: Program the controller to implement daylight savings from the first Sunday in April to the fifth Sunday in October
INPUT ↓ to select the Sunday and month daylight savings begins	3. Press OUTPUT ↓ or OUTPUT ↑ to select the Sunday and month daylight savings ends.	
OUTPUT ↑ to select the Sunday and month daylight savings ends	4. Press SWITCH TYPE to enable or disable the daylight savings time function.	
OUTPUT ↓ to select the Sunday and month daylight savings ends	5. Press QUIT to end and save the entries.	1. Press INPUT ↑ & Press TIMER ↓ at the same time.
SWITCH TYPE to enable/disable daylight savings function.		2. Press INPUT ↑ or INPUT ↓ until 1st/Apr appears as the start date.
QUIT saves entries without waiting for controller time out.		3. Press OUTPUT ↑ or OUTPUT ↓ until 5th/Oct appears as the end date
		4. Press Switch Type until Enabled appears
		5. Press QUIT or let the controller time out.

Table 1 Daylight Saving

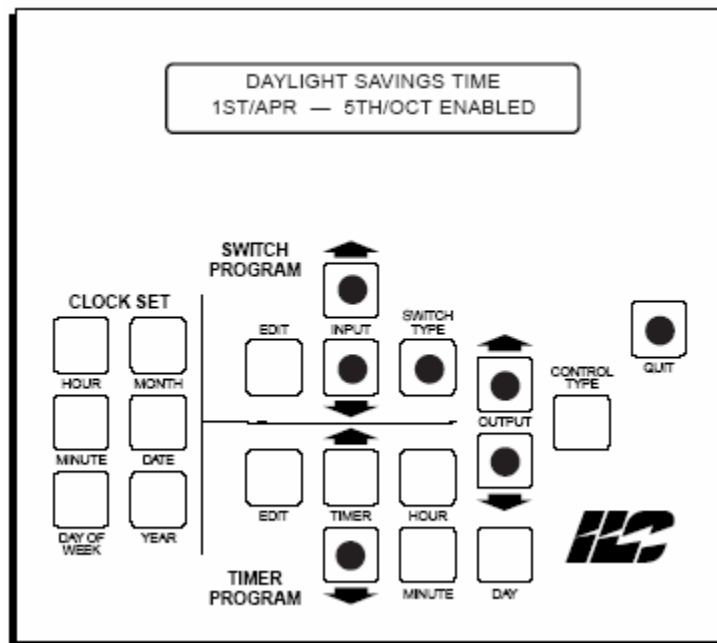


Figure 1 Keypad Programming Module

Below is the DST Adjustment procedure using software:

1. Start the ILC Quanta Host program and open the program file for the panel being adjusted. The Home screen of the program will be similar to Figure 1.
2. Click on the Configure button on the Home screen to open the configuration screen as shown in Figure 2.
3. Adjust the Ahead setting to: 1 Hour Ahead On Sunday 2 Of Mar
4. Adjust the Back setting to: 1 Hour Back On Sunday 1 Of Nov
5. If it is currently DST click on the box provided.
6. Click on the Close button to return to the Home screen.
7. Click of File and then Save File.
8. To download the settings to the panel click on the Connect button and then Continue. Press the Send Settings to Controller button on the connection screen.

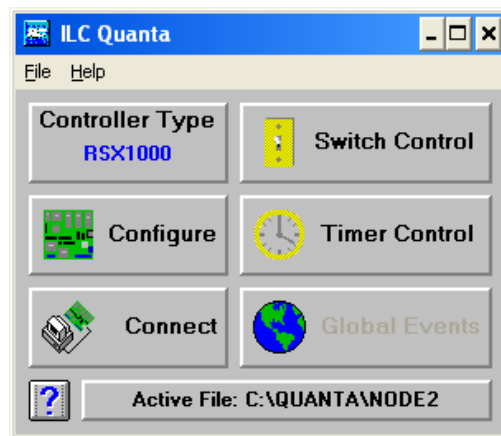


Figure 1 Home Screen

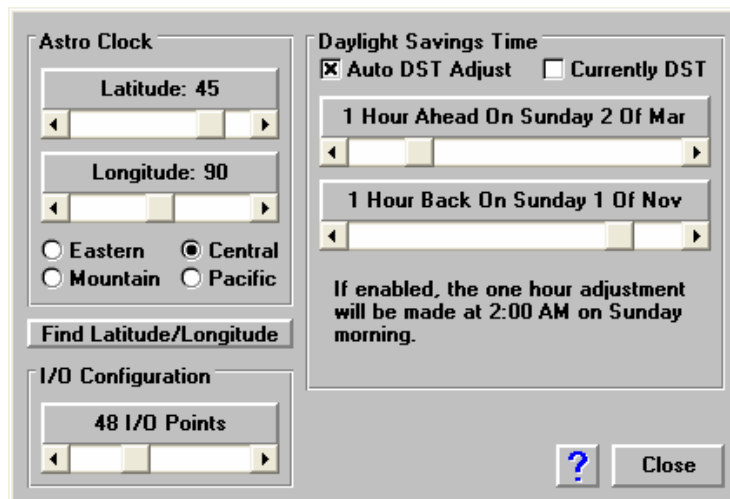


Figure 2 Configure Screen