

## ILC RSX1500 Daylight Saving Time Adjustment Programming

The RSX1500 controller has the ability to adjust the DST programming. The week/month for the start and end of DST can be adjusted as needed. This can only be done using the Q-ILCLAN Host Software.

DST Adjustment procedure:

1. Start the ILC Quanta Host program. The Home screen of the program will be similar to Figure 1.
2. Click on Setup from the title bar and then select Controllers from the pull down menu. This will bring you to the configuration screen as shown in Figure 2.
3. Adjust the +1 Hour Week/Month setting to: 2<sup>nd</sup>, March
4. Adjust the -1 Hour Week/Month setting to: 1<sup>st</sup>, November
5. Click on the Save button to save the settings to the controllers.

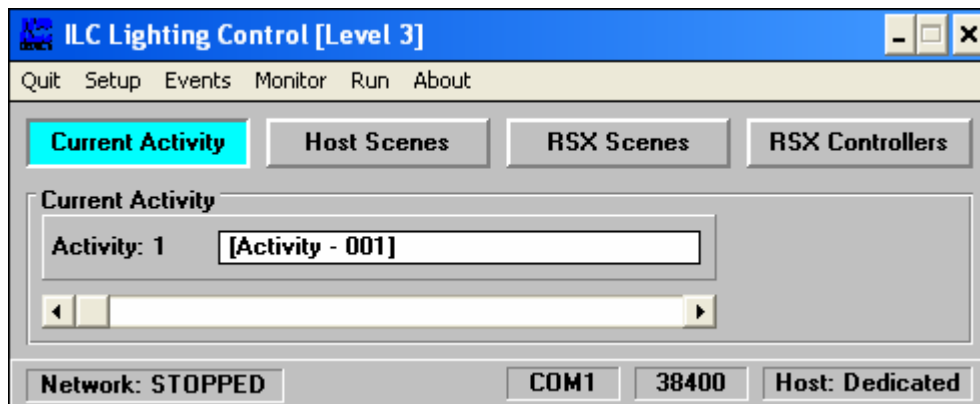


Figure 1 Home Screen

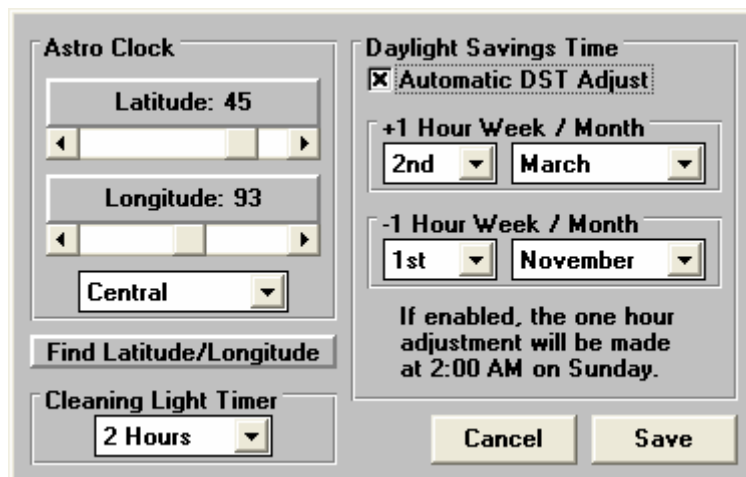


Figure 2 Configure Screen