

LightMaster BACnet MSTP Module Configurations

The LightMaster BACnet MSTP module is shipped with an IP address of 192.168.1.24 and a device address of 11. These parameters can be modified to fit your facilities needs by following the steps below. Download the utilities from <http://www.fieldserver.com/docs/downloads/Install.zip> and install them on your PC.

1. Connect the LightMaster BACnet MSTP module (Ethernet Port) and your PC to a TCP/IP connecting network or directly with the use of a cross-over cable. The PC's Ethernet must be able to connect at 10Mbit/s.
2. Set your PC's IP address to the same subnet as the module. Example: 192.168.1.25
3. Run the ping utility (ruiping.exe) until it connects like shown in Figure 1. Typically it should only take a couple minutes to connect. This is to verify the connection to the device only.

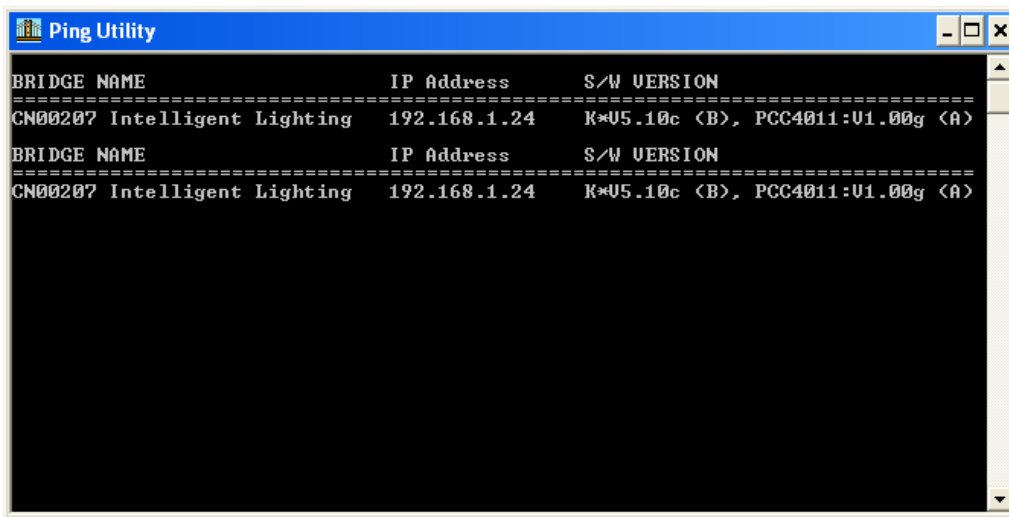


Figure 1 Ping utility screen

4. Start the FieldServer Utility program (ruinet.exe) and connect to the BACnet MSTP interface. Figure 2 shows the main menu screen of this utility. From this screen you can upload the configuration file to adjust the device address or change the IP address.
 - a. To change the IP address (for configuration settings only) in the module press "1" from the Main Menu to enter the IP configuration screen. From that screen press "1" and enter the required IP address. Turn the power on the LightMaster "off" for a few seconds and back "on" for the settings to take effect.



INTELLIGENT LIGHTING CONTROLS, INC.

5229 Edina Industrial Boulevard
Minneapolis, Minnesota 55439
Phone 952 829 1900
FAX 952 829 1901
www.ilc-usa.com

- b. To change the device address in the module press “U” from the Main Menu to enter the Upload Configuration from FieldServer screen. Press “L” and set a path to a file folder of your choice. Example: C:\temp\config.csv. Press “O” to enable upload and downloads. Press “U” to start the download (a download screen will show the progress of the transfer). See figure 3. Open the downloaded config.csv with Microsoft Excel and adjust the device address area (server side node ID) as shown in figure 4 to the address required. Save the configuration file and close the Excel program. From the Main Menu of the ruinet program select “D” to enter the Download Configuration to FieldServer screen. Press “L” and set the path to the file that was uploaded and adjusted. Example: C:\temp\config.csv. Press “O” to enable upload and downloads. Press “U” to start the download. See figure 3. Turn the power on the LightMaster off for a few seconds and back on for the settings to take effect.

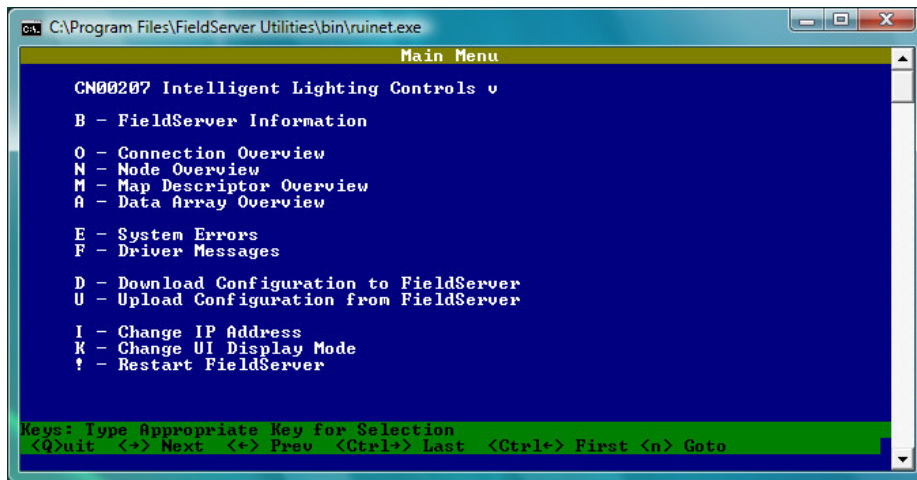


Figure 2 Main Screen

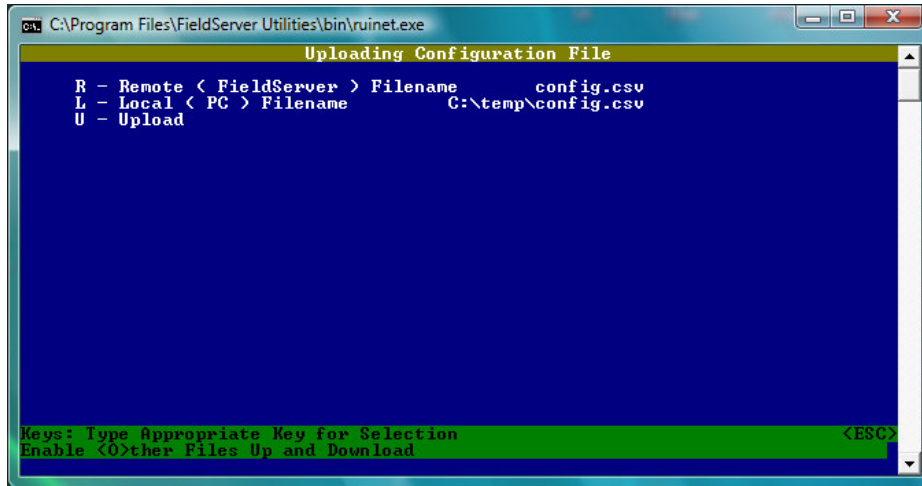


Figure 3 Upload Screen

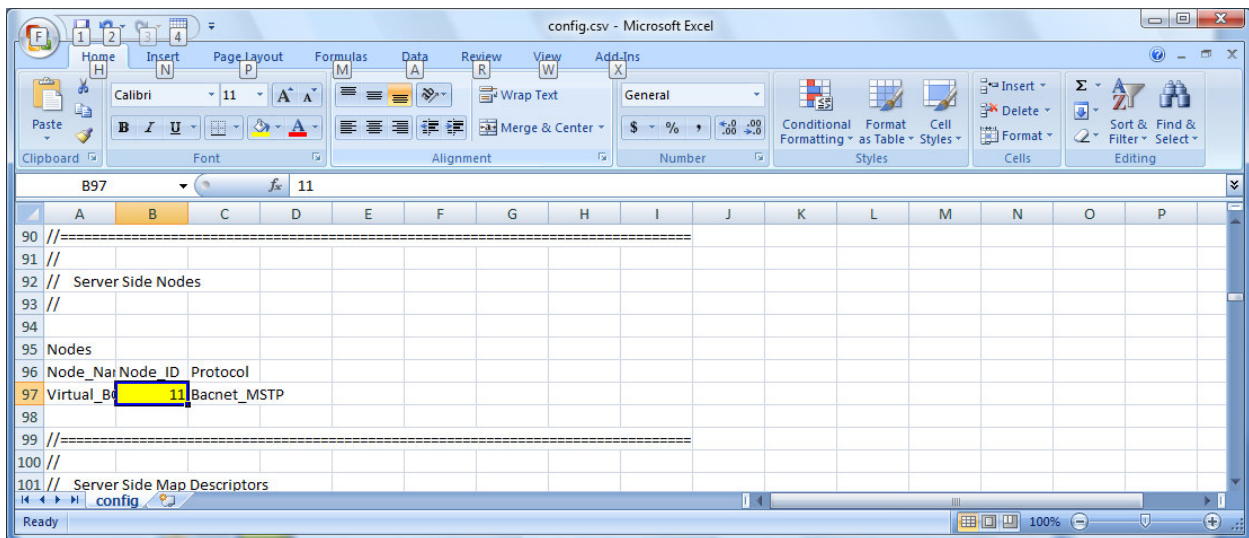


Figure 4 Device address locations in config.csv file.