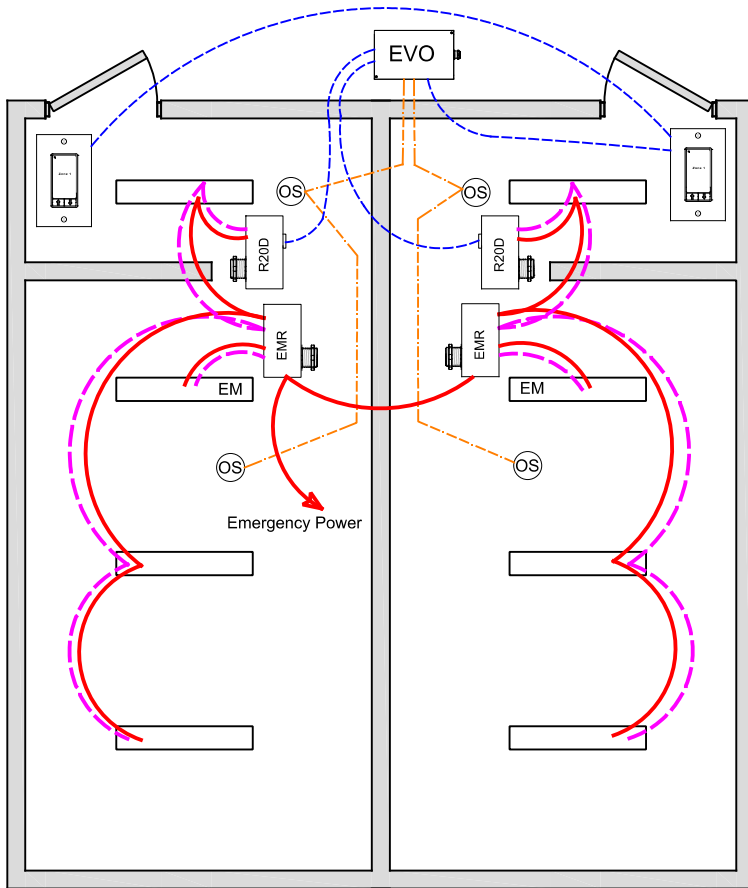


PUBLIC RESTROOM CA TITLE 24 2019 DESIGN GUIDE



OVERVIEW:

Lighting zone is controlled individually with 0-10V dimming per restroom, programmable max/min levels, occupancy on/off, local digital control stations.

SEQUENCE OF OPERATION:

Lights turn on at digital switch station, raise/lower adjustable dim level. Occupancy sensor input set for auto - on-50% - off control, can be changed to have adjustable dim level on. Dimmer outputs provide smooth full range control, zones can be set for adjustable start level from occupancy or digital switch.

Digital switch station provides individual zone on/off control and dimming.

ADDITIONAL OPTIONS:

Multiple rooms can be controlled from a single 4-zones LL-EVO panel, additional EVO-4X, EVO-8X expansion panels available for up to 16 zones. Additional LightSync switch stations as needed up to 32. LL-EVO control panel can connect to ILC network for building control, and ARD Automatic Demand Response.

Emergency lighting control bypass relay for UL-924 can be added as needed.

CODE REQUIREMENTS SUPPORTED:
 Auto-Off from Occupancy sensor (Section 130.1c)
 Multi-Level Dimming control (130.1b)
 Local Switch control w/dimming (130.1a)
 ADR Automatic Demand Response (130.1e)

WIRE LEGEND

	Line voltage
	0-10V Dimming
	CAT-5e Data cable
	3-Wire Occupancy Sensor or Photo Cell

Bill Of Material:

Qt:	Product:	Description:
1	LL-EVO	EVO Controller
2	R20D	Remote 20Amp Dimming relay
2	EMR	Emergency Relay UL924 with 0-10V dimming bypass
2	LSG3-WH-1-MZD	LightSync G3 1-Zone dimming digital switch station.
4	ILC-SWX-221-1	Occupancy sensor Ceiling Dual Tech - 500sf

LL-EVO Lighting Application: F7