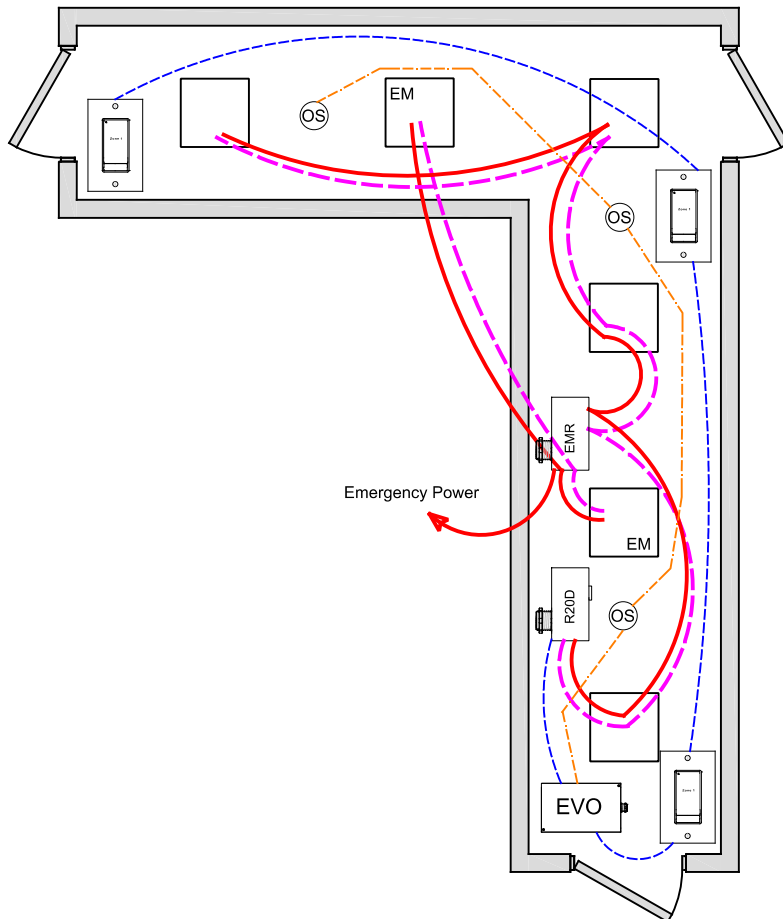


# CORRIDOR CA TITLE 24 2019 DESIGN GUIDE



WIRE LEGEND	
	Line voltage
	0-10V Dimming
	CAT-5e Data cable
	3-Wire Occupancy Sensor or Photo Cell

Bill Of Material:		
Qt:	Product:	Description:
1	LL-EVO	EVO Controller
1	R20D	Remote 20Amp Dimming relay
1	EMR	Emergency Relay UL924 with 0-10V dimming bypass
3	LSG3-WH-1	LightSync G3 1-Zone non-dim digital switch station.
3	ILC-SWX-221-1	Occupancy sensor Ceiling Dual Tech - 500sf

LL-EVO Lighting Application: F9

## OVERVIEW:

Lighting zone is controlled with 0-10V dimming, programmable max/min levels, occupancy-100%, vacancy-dim 50% level.

## SEQUENCE OF OPERATION:

Occupancy sensor input set for On-100% (or desired max level), vacancy dim to 50%(or min set level). Dimmer outputs provide smooth full range control, zones can be set for adjustable on/off-dim level from occupancy.

Digital switch station provides individual zone on/off control or set dimming level to low for off.

## ADDITIONAL OPTIONS:

Multiple corridors can be controlled from a single 4-zones LL-EVO panel, additional EVO-4X, EVO-8X expansion panels available for up to 16 zones.

Additional LightSync switch stations as needed up to 32.

LL-EVO control panel can connect to ILC network for building control, and ARD Automatic Demand Response.

Internal timer operation for stand-alone or network operation.

Emergency lighting control bypass relay for UL-924 can be added as needed.

## CODE REQUIREMENTS SUPPORTED:

Full / Partial Auto-Off from Occupancy sensor (Section 130.1c)

Automatic Off from internal or network clock (130.1c)

Local Switch control w/dimming (130.1a)

ADR Automatic Demand Response (130.1e)