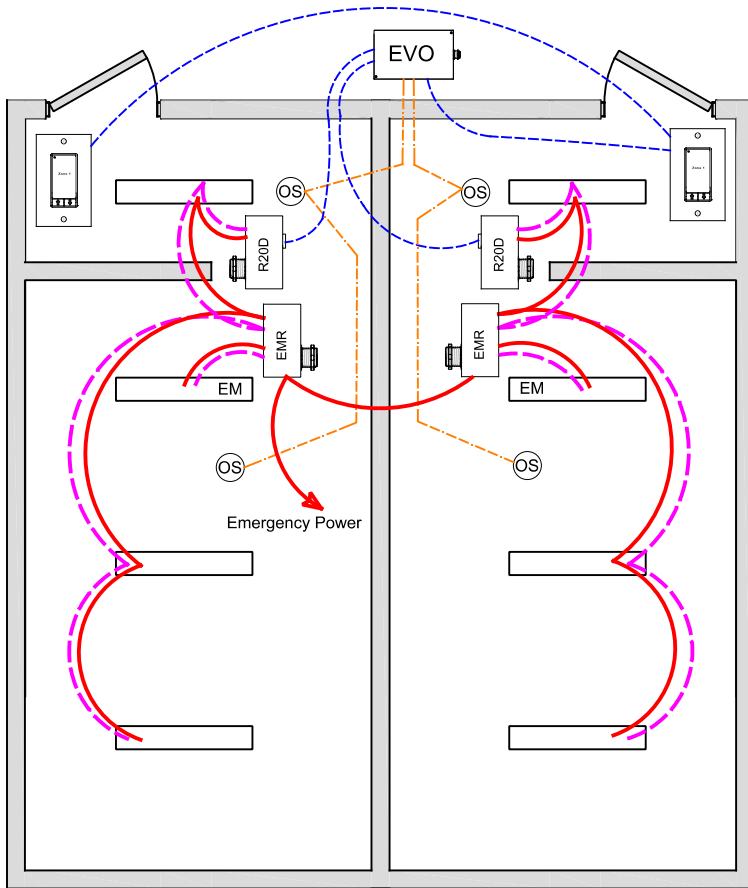


# PUBLIC RESTROOM ASHRAE DESIGN GUIDE 90.1 - 2013



**OVERVIEW:**

Lighting zone is controlled individually with 0-10V dimming per restroom, programmable max/min levels, occupancy on/off, local digital control stations.

**SEQUENCE OF OPERATION:**

Lights turn on at digital switch station, raise/lower adjustable dim level. Occupancy sensor input set for auto - on-50%/off control, can be changed to have adjustable dim level on. Dimmer outputs provide smooth full range control, zones can be set for adjustable start level from occupancy or digital switch.

Digital switch station provides individual zone on/off control and dimming. Photo control option for spaces with side lit area <250Ft<sup>2</sup> monitors daylight and limits maximum light level in daylight zone, multiple daylight zone with independent level settings.

**ADDITIONAL OPTIONS:**

Multiple rooms can be controlled from a single 4-zones LL-EVO panel, additional EVO-4X, EVO-8X expansion panels available for up to 16 zones. Additional LightSync switch stations as needed up to 32. LL-EVO control panel can connect to ILC network for building control.

Emergency lighting control bypass relay for UL-924 can be added as needed.

**CODE REQUIREMENTS SUPPORTED:**

Auto-Off from Occupancy sensor  
Multi-Level Dimming control  
Local Switch control w/dimming

WIRE LEGEND	
	Line voltage
	0-10V Dimming
	CAT-5e Data cable
	3-Wire Occupancy Sensor or Photo Cell

Bill Of Material:		
Qt:	Product:	Description:
1	LL-EVO	EVO Controller
2	R20D	Remote 20Amp Dimming relay
2	EMR	Emergency Relay UL924 with 0-10V dimming bypass
2	LSG3-WH-1-MZD	LightSync G3 1-Zone dimming digital switch station.
4	ILC-SWX-221-1	Occupancy sensor Ceiling Dual Tech - 500sf

LL-EVO Lighting Application: F7