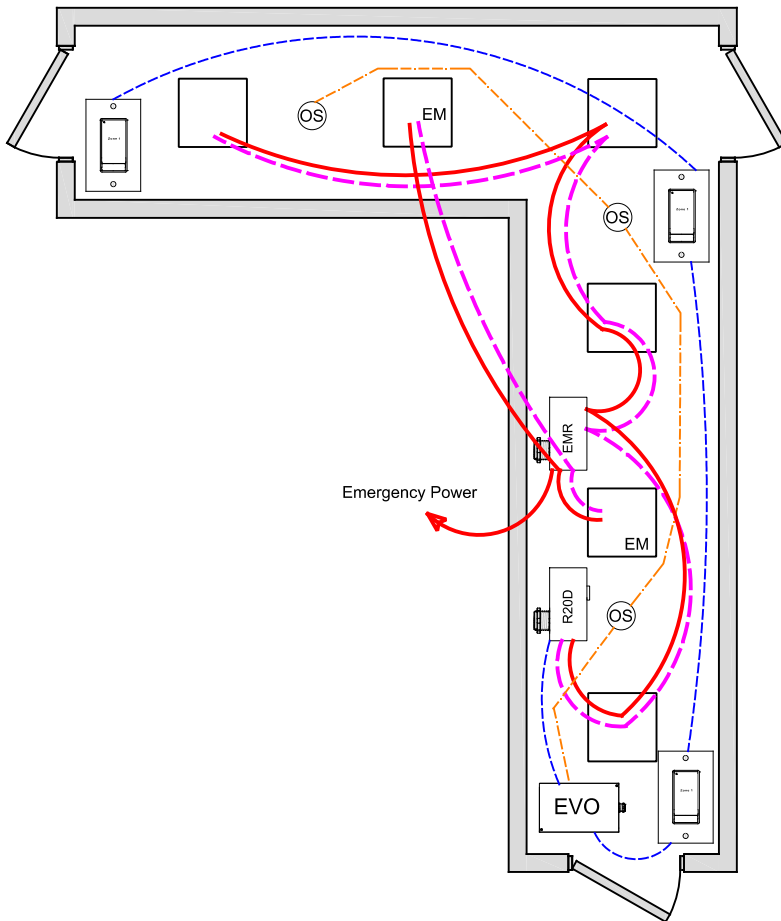


CORRIDOR ASHRAE DESIGN GUIDE 90.1 - 2013



OVERVIEW:

Lighting zone is controlled with 0-10V dimming, programmable max/min levels, occupancy on/off, local digital control stations.

SEQUENCE OF OPERATION:

Lights turn on at digital switch station. Occupancy sensor input set for on-off, can be changed to on/dim with adjustable dim level. Dimmer output provides smooth full range control, dimmer output can be set for adjustable start level from occupancy or digital switch.

Digital non-dim switch station provides individual zone on/off control or set dimming to High/Low level, or optional full range dimming MZD station (Not required). Optional digital key switch, hardwire key switch or maintained override switch.

ADDITIONAL OPTIONS:

Multiple corridors can be controlled from a single 4-zones LL-EVO panel, additional EVO-4X, EVO-8X expansion panels available for up to 16 zones.

Additional LightSync switch stations as needed up to 32.

LL-EVO control panel can connect to ILC network for building control.

Optional Photosensor for corridors with daylighting control.

Internal timer operation for stand-alone or network operation.

Emergency lighting control bypass relay for UL-924 can be added as needed.

CODE REQUIREMENTS SUPPORTED:

Full / Partial Auto-Off from Occupancy
Local Switch control w/ optional dimming

WIRE LEGEND

	Line voltage
	0-10V Dimming
	CAT-5e Data cable
	3-Wire Occupancy Sensor or Photo Cell

Bill Of Material:

Qt:	Product:	Description:
1	LL-EVO	EVO Controller
1	R20D	Remote 20Amp Dimming relay
1	EMR	Emergency Relay UL924 with 0-10V dimming bypass
3	LSG3-WH-1	LightSync G3 1-Zone Non-Dim digital switch station.
3	ILC-SWX-221-1	Occupancy sensor Ceiling Dual Tech - 500sf

LL-EVO Lighting Application: F9