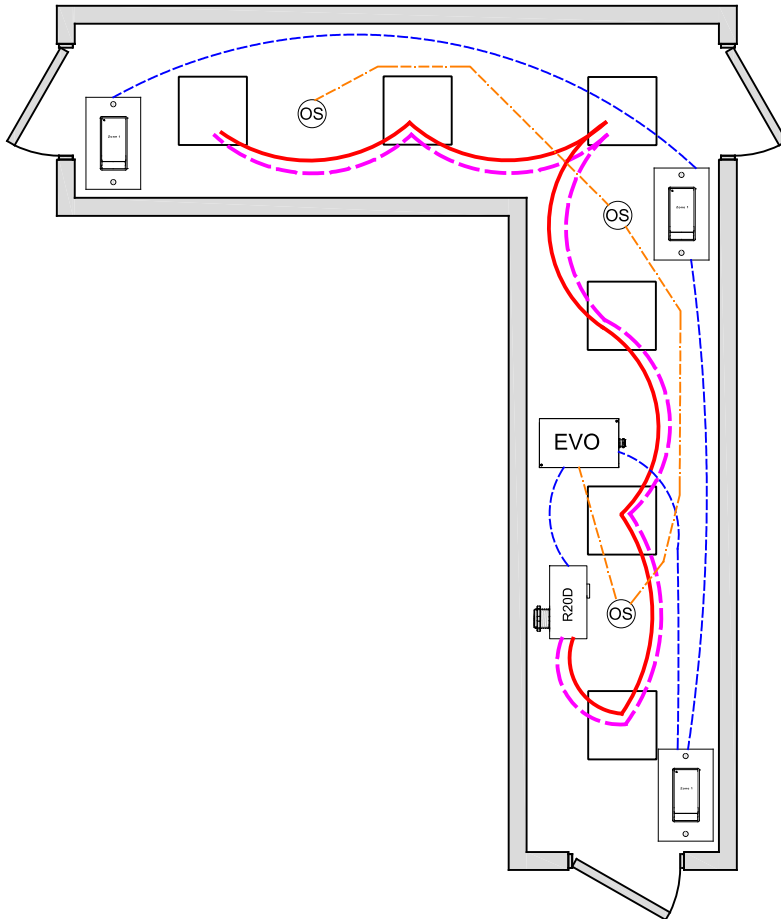


CORRIDOR IECC 2015 DESIGN GUIDE



OVERVIEW:

Lighting zone is controlled with 0-10V dimming, programmable max/min levels, vacancy off/low dim level setting, local digital control stations.

SEQUENCE OF OPERATION:

Lights turn on at digital switch station. Occupancy sensor input set for on/off, can be changed to on/off with adjustable dim levels. Dimmer output provides smooth full range control, dimmer output can be set for adjustable start level from occupancy or digital switch.

Digital switch station provides individual zone on/off control or set dimming to low level.

ADDITIONAL OPTIONS:

Multiple corridors can be controlled from a single 4-zones LL-EVO panel, additional EVO-4X, EVO-8X expansion panels available for up to 16 zones.

Additional LightSync switch stations as needed up to 32.

LL-EVO control panel can connect to ILC network for building control (C405.2.2.1). Internal timer operation for stand-alone or network operation.

Emergency lighting control bypass relay for UL-924 can be added as needed.

WIRE LEGEND

	Line voltage
	0-10V Dimming
	CAT-5e Data cable
	3-Wire Occupancy Sensor or Photo Cell

Bill Of Material:

Qt:	Product:	Description:
1	LL-EVO	EVO Controller
1	R20D	Remote 20Amp Dimming relay
1	EMR	Emergency Relay UL924 with 0-10V dimming bypass
3	LSG3-WH-1	LightSync G3 1-Zone non-dim digital switch station.
3	ILC-SWX-221-1	Occupancy sensor Ceiling Dual Tech - 500sf

LL-EVO Lighting Application: F9

CODE REQUIREMENTS SUPPORTED:

Full Auto-Off from Occupancy (C405.2.1.1)