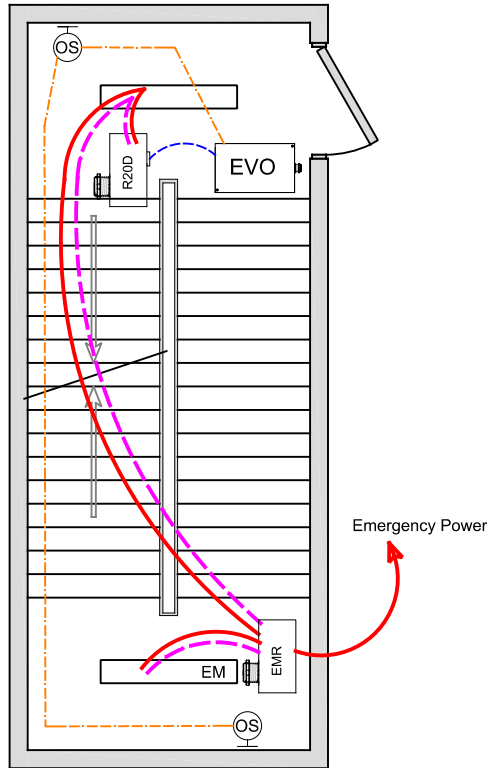


STAIRWELL IECC 2015 DESIGN GUIDE



OVERVIEW:

Lighting zone is controlled with 0-10V dimming, programmable max/min levels, occupancy-100%, vacancy-dim 30% level.

SEQUENCE OF OPERATION:

Occupancy sensor input set for On-100% (or desired max level), vacancy dim to 50%(or min set level). Occupancy inputs change operation for Open-Day high/low and Closed-Night On-100%/Off. Internal Real Time Clock operation with Astro option or LightLEEDer Network clock sync for building control. Dimmer outputs provide smooth full range control, zones can be set for adjustable start level from occupancy or digital switch. Digital switch station provides individual zone High/Low. Optional digital key switch, hardwire key switch or maintained override switch.

ADDITIONAL OPTIONS:

Multiple stairwells can be controlled from a single 4-zones LL-EVO panel, additional EVO-4X, EVO-8X expansion panels available for up to 16 zones. Up to 4-zones with single LL-EVO panel. Additional LightSync switch stations as needed up to 32. LL-EVO control panel can connect to ILC network for building control (C405.2.2.1) Optional Photosensor daylight control for window lit stairwell.

Emergency lighting control bypass relay for UL-924 can be added as needed.

CODE REQUIREMENTS SUPPORTED:

Full or Partial Auto-Off from Occupancy sensor (C504.2.1.1)

WIRE LEGEND

	Line voltage
	0-10V Dimming
	CAT-5e Data cable
	3-Wire Occupancy Sensor or Photo Cell

Bill Of Material:

Qt:	Product:	Description:
1	LL-EVO	EVO Controller
1	R20D	Remote 20Amp Dimming relay
1	EMR	Emergency Relay UL924 with 0-10V dimming bypass
2	ILC-SWX-421-1	Wall Occupancy sensor Dual Tech - Wide View

LL-EVO Lighting Application: F9