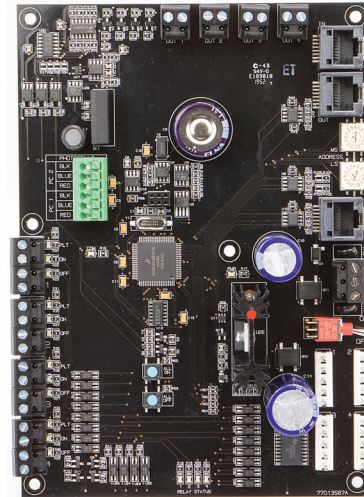


LightLEEDer

LM4 Retrofit Controller

Overview

A LightLEEDer Retrofit controller can take your present outdated LightMaster-4 panel and retrofit it up to today's standards. All the enhanced features of the current LightLEEDer system will be available with this retrofit controller from LightSync switches to dimming outputs. The LightLEEDer LM4 Retro upgrade will support all the original connections for existing 2R9C relays, switch inputs, photocells, transformer, and dimmer outputs by only replacing the LM4 controller. No need to change the high voltage wiring, or even shut off the lights during the upgrade.



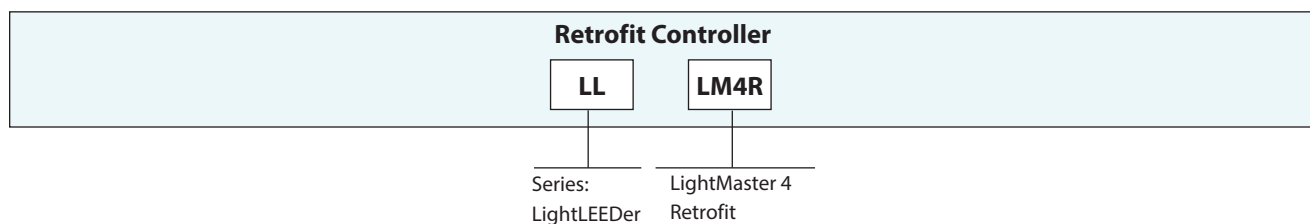
Features

- **Made in the USA**
- **Digital CAT-5 Ready**
- **Direct Retrofit** controller matches original layout and mounting
- **Original Connections** are supported using the pull off terminal blocks for relays, power, inputs and dimming
- **All ON/Off** override switch with relay status LED
- **3-Wire inputs** that match original LM4 configuration for easy reuse of existing switches
- **LightSync G3** stations and legacy G2 stations supported
- **Dimming** output 0-10V provide
- **2R9C** relay output for existing relays
- **Programming Options** are done using the free LightLEEDer Pro software at the LL-Network Controller
- **Network Capability** allows up to 254 panels and 64 LightSync devices
- **Relay, Groups, Presets, and Scene** enhancements for LightLEEDer are supported
- **128 Timer Schedules** that can turn relays ON/OFF for Time-of-Day, Astronomical times, or Open/Close times
- **Stand alone or Network** LightLEEDer system upgrade
- **Simple Retrofit** from LightMaster-4 with LightLEEDer Retro

Warranty

Six-year limited warranty

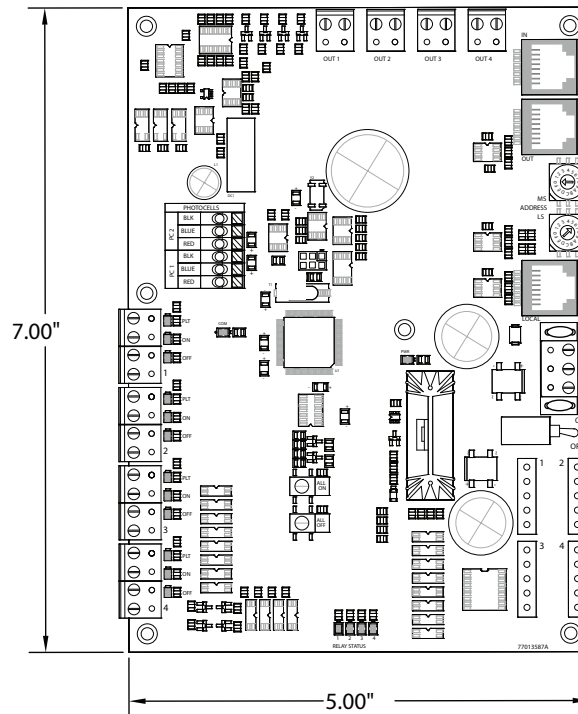
Ordering



LightLEEDer

LM4 Retrofit Controller

Physical



LightLEEDer LM4 Retro

Specifications

Physical:

- 5.00" W x 7.00" H

Electrical:

- 16VAC CT from existing transformer

Inputs and Outputs:

- 3-wire power input for existing transformer
- Four 3-Wire switch inputs with status
- Two ILC photocell push to terminate inputs
- Four 2R9C relay outputs
- Four 0-10VDC dimming control outputs

Safeguards:

- Power surge and spike suppression up to 123 volts on the 16VAC power input
- Data Line surge and spike suppression up to 8Kv and 15Kv through air
- Memory retention for firmware and programming up to 200 years and electrostatic discharge to 4Kv
- Real-Time-Clock time retention 45 days or greater without power

Operating Environment:

- Location Interior Space
- Operating Temperature 0° to 50° C
- Humidity 10% to 90% Non-condensing

Certifications and Approvals:

- UL and CUL listed
- FCC Part 15
- Title 24
- ASHRAE compliant