

LightLEEDer

Runtime Pro Software

Overview

LightLEEDer Runtime Pro software is a Windows-based software that harvests and documents runtime and trending data of loads in stand-alone or networked LightLEEDer systems. Simply connect directly using a USB cable or through a network TCP/IP connection from your LAN or WAN and you're ready to compile data from the LightLEEDer system. Data harvested can be recorded for single or combined groups of relays. This data can be displayed as a spreadsheet report or in a graph form for daily or monthly usage. Reports are able to be directly exported to a comma separated value file that can be opened in Excel. Live usage wattage meters are available for displaying single or combined relays.



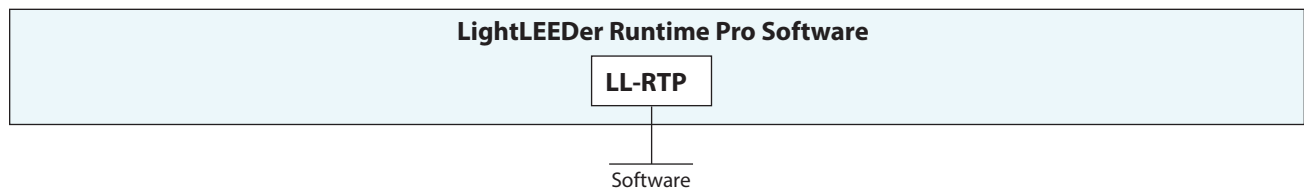
Features

- **Made in the USA**
- **Windows-based** Runtime and Trending software
- **Harvest** data directly from lighting controllers
- **Records** load states, photocell and dimming levels
- **Graphical** interface with point-and-click commands
- **Connect** using USB or TCP/IP
- **Runtime** recorded to the minute
- **Trending** generates a graphical chart of ON and OFF times
- **Wattage** settings for each relay
- **Export** data into a spreadsheet
- **Print** data directly from graph screen
- **Compatible** for stand-alone or networked systems

Warranty

Six-year limited warranty

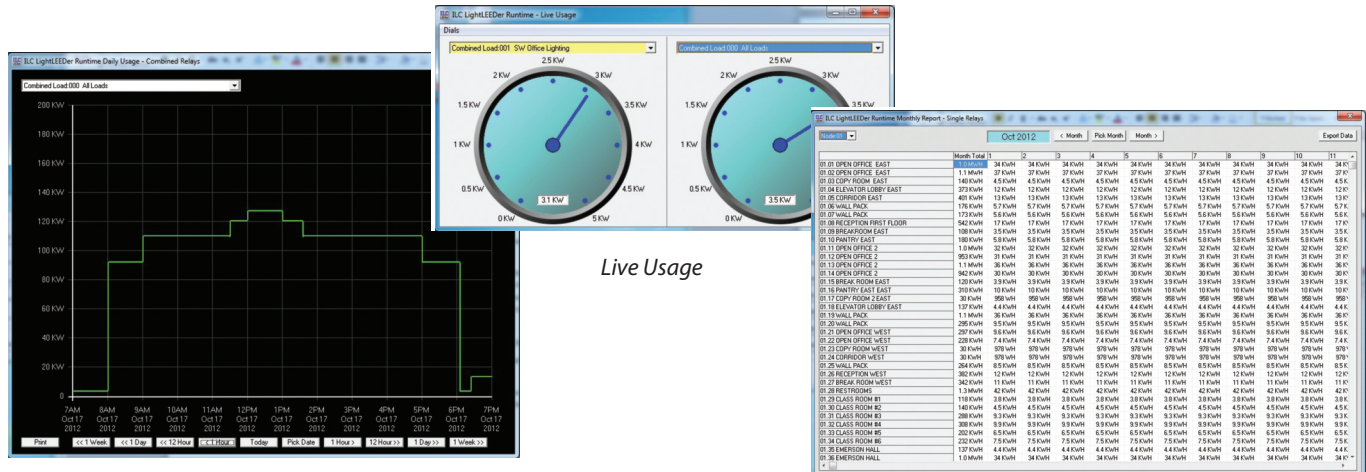
Ordering



LightLEEDer

Runtime Pro Software

Physical



Runtime Daily Usage

Monthly Reports

Specifications

Data Harvest:

- Data harvest time is every minute

Runtime:

- Logs the time relay loads are ON
- Visual totals for each relay

Trending:

- Logs the time relay loads are ON
- Graphical line chart for single or combined relays

Data:

- Comma separated values .CSV

Suggested Minimum System Requirements:

- PC or laptop
- 1.66 Ghz single core
- Windows XP, Vista, 7 or 8
- USB 2.0
- 1G RAM
- SVGA monitor 1024 x 768
- 10/100 Ethernet adapter

Connection Options:

- USB 2.0
- TCP/IP 10/100