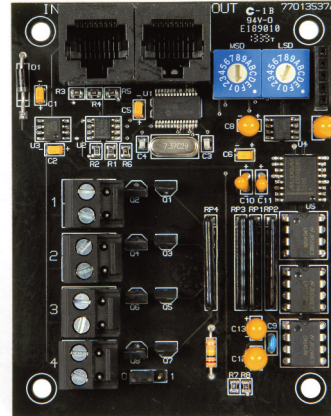


LightSync Digital Dimming Module

Overview

The LightSync Dimming Module is designed for 0-10V device control. It can be used in conjunction with a photocell controller for programmable daylight harvesting. This module can be installed in the lighting control panel or remotely mounted on the LightSync network. Each of the 4 independent channels can control up to 200 ballasts with 256 steps between 0 and 10V. Outputs are designed to sink voltage, and an optional module is available with sink/source/direct drive option. Each output may be programmed to respond to 16 inputs per channel. The intuitive software provided makes it easy to program and adjust the settings. If the power is lost to the standard dimming module, the output signal to the ballast will go to 10V for full brightness.



Features

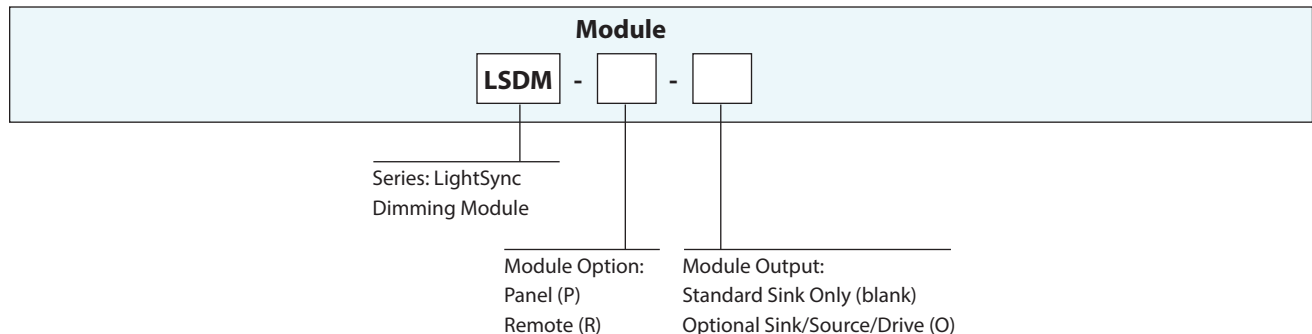
- **Made in the USA**
- **Digital CAT-5 Ready**
- **4 independent channels** per module provide the flexibility to control up to 4 zones
- **Each output** can control up to 200 typical ballasts at .5mA each
- **Power-On level settings** allow each output to be configured for 0 to 100% levels upon power-up
- **Power Loss** to dimming module sets dimming to full brightness
- **LightSync photocell** tracking programmed directly to output point(s)
- **Each output may be programmed** to respond to 16 Light-Sync or hardwire inputs. Each input can be programmed to force the output to a preset level, raise or lower at 10% increments, and can work in conjunction with a photocell.

- Inputs can be set to “revert to photocell control” after a period of time that can range from 5 to 600 minutes in 5 minute increments.
- **Fade rate** of 0 to 300 seconds can be programmed for each output
- **Minimum and maximum output levels** can be configured for each output
- **With a DMX512 serial interface**, each output can be controlled by any of the DMX512 signal channels
- **Panel mount** installs directly on output board
- **Remote mounting** option for LightSync network
- **Removable connectors** for easy installation
- **Digitally addressable**
- **Optional** sink/source and direct drive output module

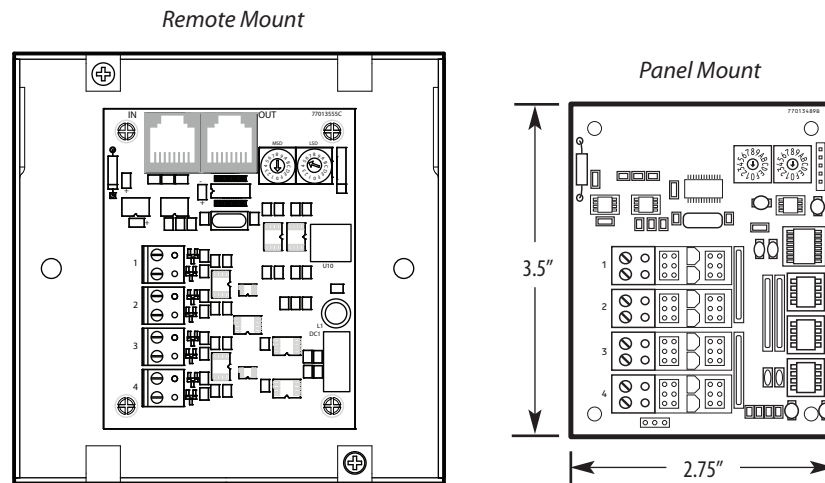
Warranty

Six-year limited warranty

Ordering



Physical



Specifications

Physical:

- 2.75" Wide X 3.5" High
- Removable output connectors
- Digital addressing switches
- RJ45 connectors for remote mounting options

Electrical:

- Powered from the panel or from the LightSync network
- 100mA sink per channel (Optional Module: 100mA sink/source and 10mA direct)
- 0-10VDC

Configuration:

- Software programming
- Directly through keypad

Operating Environment:

- Location: Interior space
- Operating Temp.: 0° to 50° C
- Humidity: 10% - 90% Non-condensing
- Atmosphere: Non-explosive/corrosive
- Vibration: Stationary

Certifications and Approvals:

- FCC Part 15