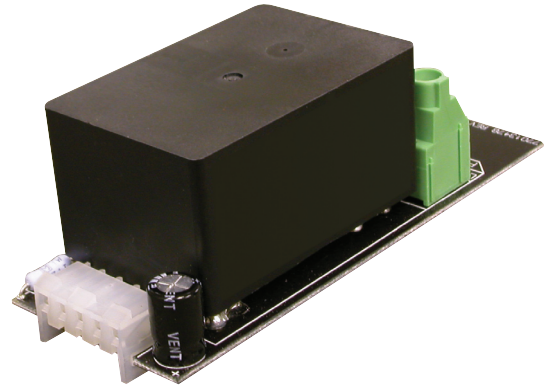


## Apprentice3

## 2-Pole Relay Board

### Overview

The 2 Pole Relay (AP3R-2) Board mounts directly in Apprentice3 lighting control panels and is designed to control 208/240/480 VAC loads. This two pole relay assembly mounts directly in place of the AP3R-1 single pole relay board. The relays are electrically held, are available in N.O. (normally open) contacts, and can be mixed in the lighting controller with AP3R-1 relay boards. These relay boards are easily mounted in the Apprentice3 panel with a push-on connector interface and a single screw.



### Features

- Made in the USA
- UL Listed
- Mounts in the panel with a push-on connector and a single screw.
- Up to 4 2-pole relays can be mounted in panel.

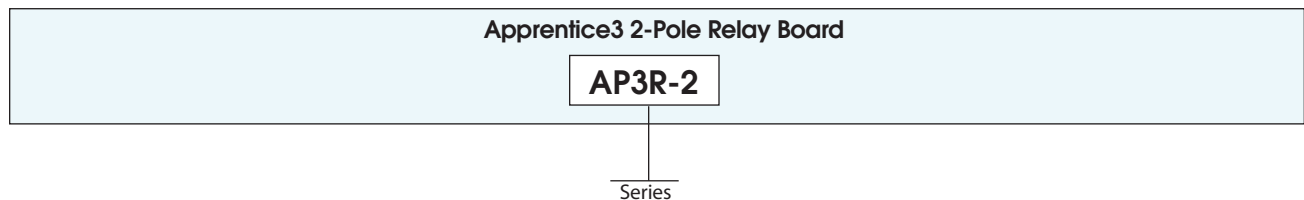
#### High Voltage Characteristics

- DPST Contacts
- NO (Normally Open) contacts
- Screw type terminals handle #10AWG solid or stranded copper wire

### Warranty

Five-year limited warranty

### Ordering

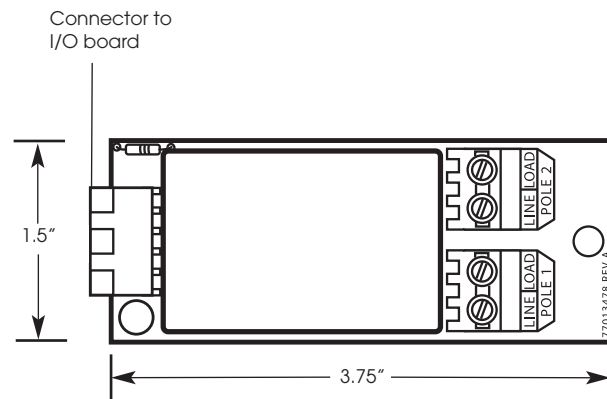


**Note: Only 4 2-pole relays can be mounted per panel.**

## Apprentice3

## 2-Pole Relay Board

### Physical



### Specifications

#### Physical:

- 3.75"W x 1.5"H x 1.3"D
- Plug-in module designed for mounting directly to Apprentice3 I/O board(s)

#### Electrical:

- 16 amp electronic ballast
- 16 amp ballast
- 16 amp resistive
- 16 amp general
- 50 to 60 Hz
- Up to 347 VAC per pole controlling 208/240/480 VAC circuits

#### Operating Environment:

- Location Interior space
- Operating Temperature 0° to 40° C
- Relative Humidity 10% to 90% Non-condensing
- Atmosphere Non-explosive, Non-corrosive
- Vibration Stationary application NEMA Level A

#### Certifications:

- UL CUL
- FCC approval for commercial and residential use