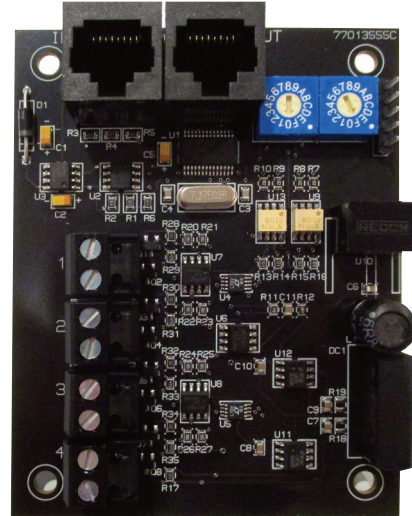


Apprentice 3

Isolated Dimming Module

### Overview

The LightSync Isolated Dimming Module is designed for 0 -10V device control. This dimmer is galvanically isolated up to 1500V and designed to be used with MC luminary style cable. This module can be installed in the lighting control panel or remotely mounted on the LightSync network. Each of the 4 independent channels can control up to 200 ballasts with 256 steps between 0 and 10V. Outputs are designed to sink voltage up to 100mA per channel. Each output may be programmed to respond to 16 inputs per channel. Upon loss of power, the dimmer outputs will go to 10V or full brightness. The intuitive software provided makes it easy to program and adjust the settings.



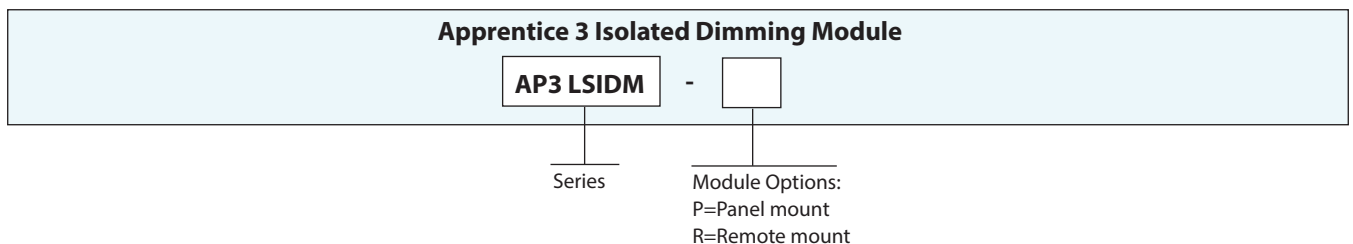
### Features

- **Made in the USA**
- **Digital CAT-5 Ready**
- 4 independent channels per module provide the flexibility to control up to 4 zones
- Each output can control up to 200 typical ballast at .5mA each (sink voltage)
- Galvanically isolated up to 1500V
- Power-On level settings allows each output to be configured for 0 to 100% levels upon power-up
- Power loss to dimmer module sets dimming to full brightness
- LightSync photocell tracking programmed directly to output point(s)
- Each output may be programmed to respond to 16 LightSync or hardwire inputs. Each input can be programmed to force the output to a preset level, raise or lower at 10% increments and can work in conjunction with a photocell. Inputs can be set to "revert to photocell control" after a period of time that can range from 5 to 600 minutes in 5 minute increments.
- Fade rate of 0 to 300 seconds can be programmed for each output
- Minimum and maximum output levels can be configured for each output
- With a DMX512 serial interface, each output can be controlled by any of the 512 DMX512 signal channels
- Panel mount option for mounting with relay driver module
- Remote mounting standard installs in LightSync network
- RJ45 connectors for connection to LightSync network using CAT-5 cable
- Removable connectors for easy installation
- Digitally addressable
- 12 dimmer modules supported for a maximum of 48 channels

### Warranty

One year limited warranty

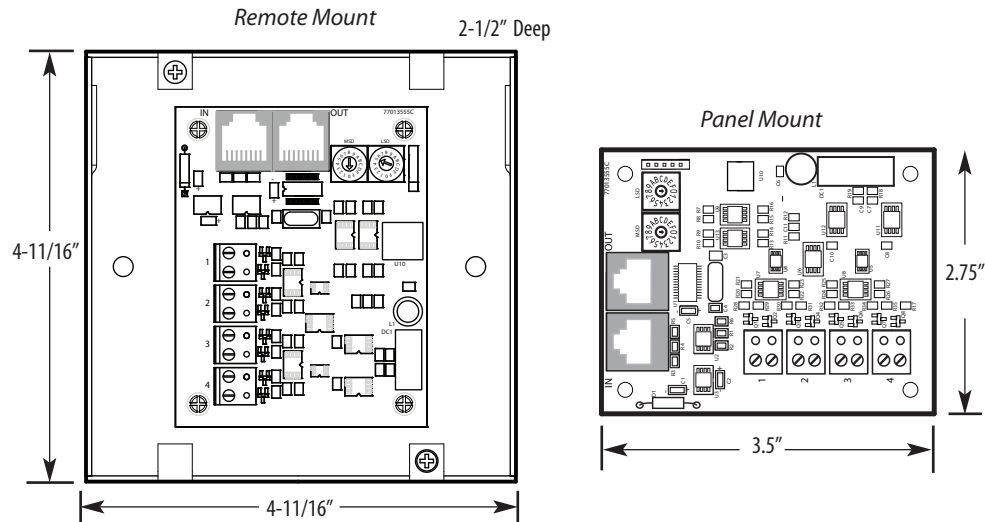
### Ordering



## Apprentice 3

## Isolated Dimming Module

## Physical



## Specifications

**Physical:**

- 2.75" Wide X 3.5" High
- Remote mounted  $4\frac{11}{16}$ " junction box
- Removable output connectors
- Digital addressing switches
- RJ45 connectors for LightSync CAT-5 data connection

**Electrical:**

- Powered from the panel or from the LightSync network
- 100mA sink per channel
- 0-10VDC

**Configuration:**

- Software programming
- Directly through keypad

**Operating Environment:**

- Location: Interior space
- Operating Temp.:  $0^{\circ}$  to  $50^{\circ}$  C
- Humidity: 10% - 90% Non-condensing
- Atmosphere: Non-explosive/corrosive
- Vibration: Stationary

**Certifications:**

- FCC Part 15