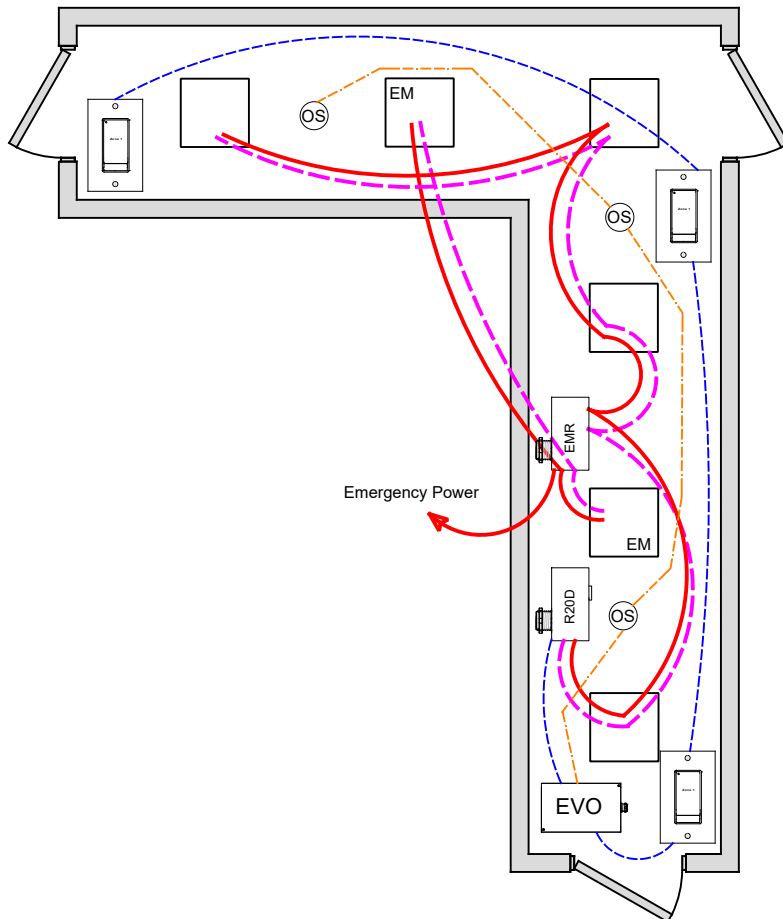


CORRIDOR CA TITLE 24 2019 DESIGN GUIDE



OVERVIEW:

Lighting zone is controlled with 0-10V dimming, programmable max/min levels, occupancy-100%, vacancy-dim 50% level.

SEQUENCE OF OPERATION:

Occupancy sensor input set for On-100% (or desired max level), vacancy dim to 50%(or min set level). Dimmer outputs provide smooth full range control, zones can be set for adjustable on/off-dim level from occupancy.

Digital switch station provides individual zone on/off control or set dimming level to low for off.

ADDITIONAL OPTIONS:

Multiple corridors can be controlled from a single 4-zones LLEVO panel, additional LSEVO-4X, -8X expansion panels available for up to 20 zones.

Additional LightSync switch stations as needed up to 32.

LLEVO control panel can connect to ILC network for building control, and ARD Automatic Demand Response.

Internal timer operation for stand-alone or network operation.

Emergency lighting control bypass relay for UL-924 can be added as needed.

CODE REQUIREMENTS SUPPORTED:

Full / Partial Auto-Off from Occupancy sensor (Section 130.1c)

Automatic Off from internal or network clock (130.1c)

Local Switch control w/dimming (130.1a)

ADR Automatic Demand Response (130.1e)

WIRE LEGEND

	Line voltage
	0-10V Dimming
	CAT-5e Data cable
	3-Wire Occupancy Sensor or Photo Sensor

Bill Of Material:

Qt:	Product:	Description:
1	LLEVO	EVO Controller
1	R20D	Remote 20Amp Dimming relay
1	EMR	Emergency Relay UL924 with 0-10V dimming bypass
3	LSG3-WH-1	LightSync G3 1-Zone non-dim digital switch station.
3	ILC-SWX-221-1	Occupancy sensor ceiling Dual Tech - 500sf

LLEVO Pre-Program: F9