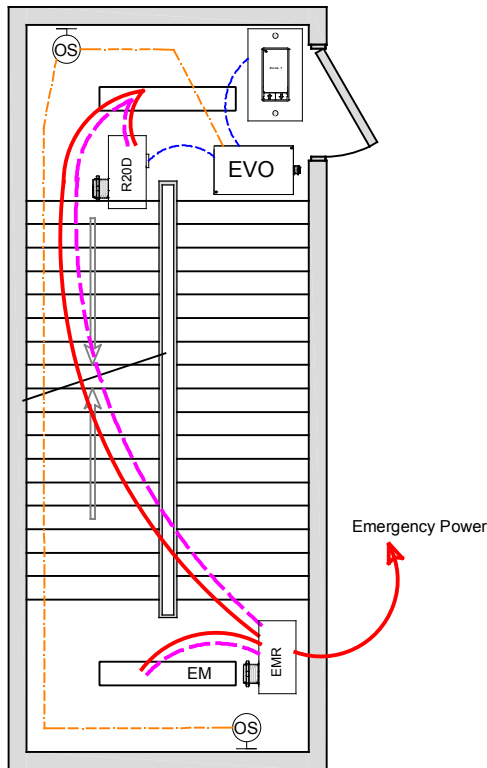


STAIRWELL CA TITLE 24 2016 DESIGN GUIDE



OVERVIEW:

Lighting zone is controlled with 0-10V dimming, programmable max/min levels, occupancy-100%, vacancy-dim 50% level.

SEQUENCE OF OPERATION:

Occupancy sensor input set for On-100% (or desired max level), vacancy dim to 50%(or min set level). Dimmer outputs provide smooth full range control, zones can be set for adjustable on/off-dim level from occupancy. Digital switch station provides individual zone on/off control or set dimming level to low for off.

ADDITIONAL OPTIONS:

Multiple stairwells can be controlled from a single 4-zones LL-EVO panel, additional EVO-4X, EVO-8X expansion panels available for up to 16 zones.

Additional LightSync switch stations as needed up to 32.

LL-EVO control panel can connect to ILC network for building control, and ARD Automatic Demand Response. Internal real time clock operation with Astro option or LightLEEDer Network clock sync for building control.

Optional Photosensor daylight control for window lit stairwell.

Emergency lighting control bypass relay for UL-924 can be added as needed.

CODE REQUIREMENTS SUPPORTED:

Partial Auto-Off from Occupancy sensor (Section 130.1c)

Multi-Level Dimming control (130.1b)

Local Switch control w/dimming (130.1a)

ADR Automatic Demand Response (130.1e)

WIRE LEGEND

	Line voltage
	0-10V Dimming
	CAT-5e Data cable
	3-Wire Occupancy Sensor or Photo Cell

Bill Of Material:

Qt:	Product:	Description:
1	LL-EVO	EVO Controller
1	R20D	Remote 20Amp Dimming relay
1	EMR	EM 924 Relay with 0-10V dimming bypass
1	LSG3-WH-1-MZD	LightSync G3 1-Zone dimming digital switch station.
2	ILC-SWX-421-1	Wall Occupancy sensor Dual Tech - Wide View