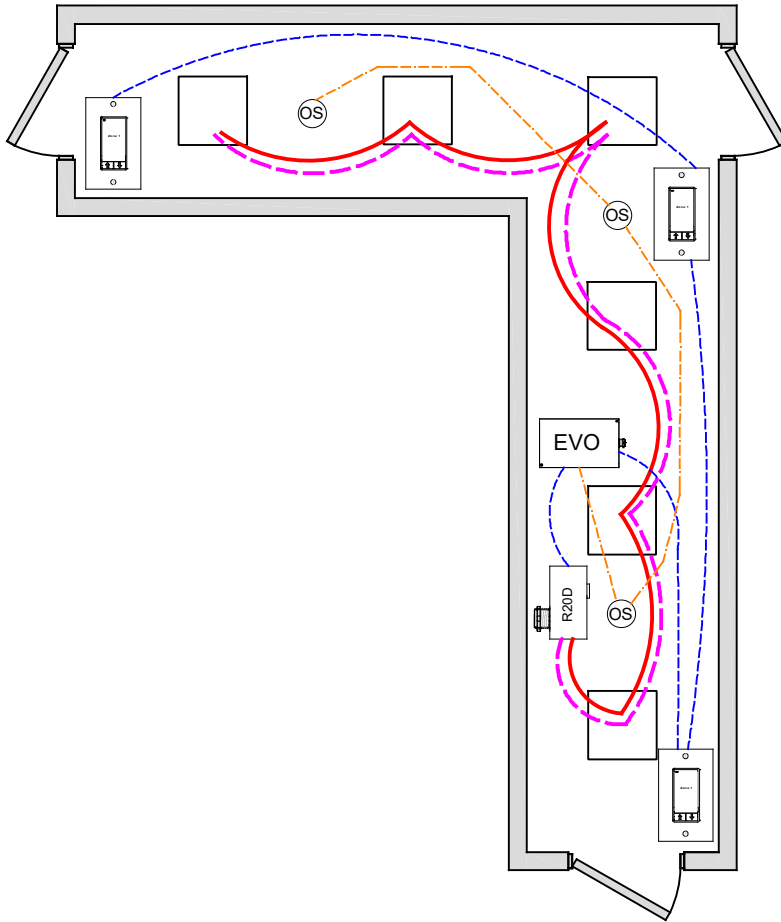


CORRIDOR ASHRAE DESIGN GUIDE 90.1 - 2013



OVERVIEW:

Lighting zone is controlled with 0-10V dimming, programmable max/min levels, occupancy on/off, local digital control stations.

SEQUENCE OF OPERATION:

Lights turn on at digital switch station. Occupancy sensor input set for on-off, can be changed to on/dim with adjustable dim level. Dimmer output provides smooth full range control, dimmer output can be set for adjustable start level from occupancy or digital switch.

Digital switch station provides individual zone on/off control or set dimming to low level.

ADDITIONAL OPTIONS:

Multiple corridors can be controlled from a single 4-zones LL-EVO panel, additional EVO-4X, EVO-8X expansion panels available for up to 16 zones.

Additional LightSync switch stations as needed up to 32.

LL-EVO control panel can connect to ILC network for building control.

Optional Photosensor for corridors with daylighting control.

Internal timer operation for stand-alone or network operation.

Emergency lighting control bypass relay for UL-924 can be added as needed.

WIRE LEGEND

| | |
|--|---------------------------------------|
| | Line voltage |
| | 0-10V Dimming |
| | CAT-5e Data cable |
| | 3-Wire Occupancy Sensor or Photo Cell |

Bill Of Material:

| Qt: | Product: | Description: |
|-----|---------------|---|
| 1 | LL-EVO | EVO Controller |
| 1 | R20D | Remote 20Amp Dimming relay |
| 3 | LSG3-WH-1-MZD | LightSync G3 1-Zone dimming digital switch station. |
| 3 | ILC-SWX-221-1 | Occupancy sensor Ceiling Dual Tech - 500sf |

CODE REQUIREMENTS SUPPORTED:

Full / Partial Auto-Off from Occupancy
Local Switch control w/ optional dimming