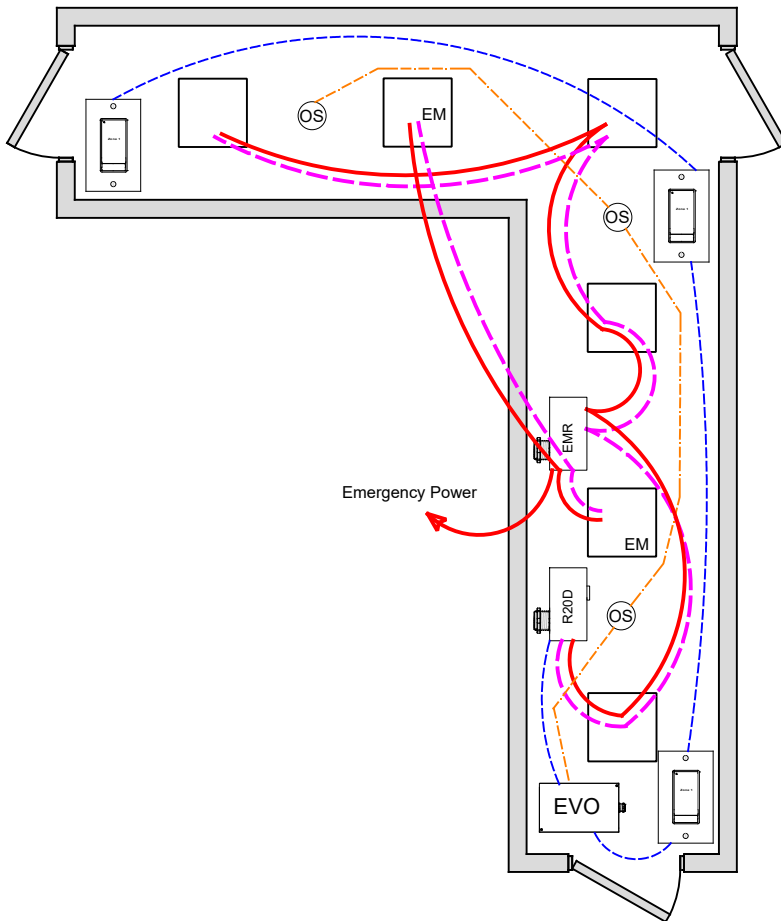


CORRIDOR ASHRAE DESIGN GUIDE 90.1 - 2013



OVERVIEW:

Lighting zone is controlled with 0-10V dimming, programmable max/min levels, occupancy on/off, local digital control stations.

SEQUENCE OF OPERATION:

Lights turn on at digital switch station. Occupancy sensor input set for on-off, can be changed to on/dim with adjustable dim level. Dimmer output provides smooth full range control, dimmer output can be set for adjustable start level from occupancy or digital switch.

Digital non-dim switch station provides individual zone on/off control or set dimming to High/Low level, or optional full range dimming MZD station (Not required). Optional digital key switch, hardwire key switch or maintained override switch.

ADDITIONAL OPTIONS:

Multiple corridors can be controlled from a single 4-zones LLEVO panel, additional LSEVO-4X, -8X expansion panels available for up to 20 zones.

Additional LightSync switch stations as needed up to 32.

LLEVO control panel can connect to ILC network for building control.

Optional Photosensor for corridors with daylighting control.

Internal timer operation for stand-alone or network operation.

Emergency lighting control bypass relay for UL-924 can be added as needed.

CODE REQUIREMENTS SUPPORTED:

Full / Partial Auto-Off from Occupancy
Local Switch control w/ optional dimming

WIRE LEGEND

	Line voltage
	0-10V Dimming
	CAT-5e Data cable
	3-Wire Occupancy Sensor or Photo Sensor

Bill Of Material:

Qt:	Product:	Description:
1	LLEVO	EVO Controller
1	R20D	Remote 20Amp Dimming relay
1	EMR	Emergency Relay UL924 with 0-10V dimming bypass
3	LSG3-WH-1	LightSync G3 1-Zone Non-Dim digital switch station.
3	ILC-SWX-221-1	Occupancy sensor ceiling Dual Tech - 500sf

LLEVO Pre-Program: F9