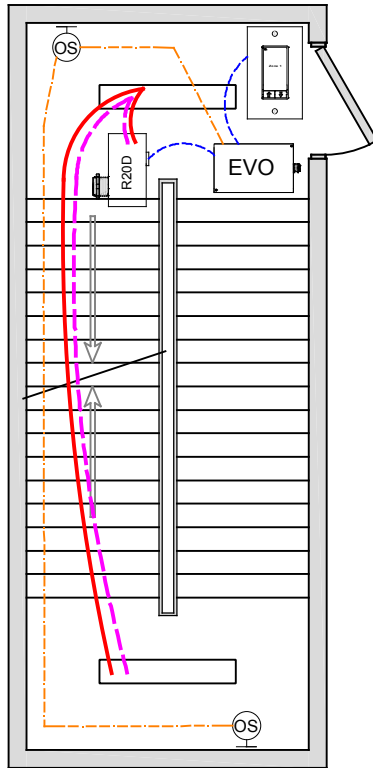


STAIRWELL

ASHRAE DESIGN GUIDE 90.1 - 2010



OVERVIEW:

Lighting zone is controlled with 0-10V dimming, programmable max/min levels, vacancy-dim level, local digital control stations.

SEQUENCE OF OPERATION:

Lights turn on to 100% at digital switch station, Dim to 50% with off and allow full range dimming. Occupancy sensor input set for On-100% (or desired max level), vacancy dim to 50%(or min set level). Dimmer outputs provide smooth full range control, zones can be set for adjustable start level from occupancy or digital switch. Digital switch station provides individual zone on/off (Dim 50%) control and dimming of overall space (Not required). Internal Real Time Clock operation with Astro option or LightLEEDer Network clock sync for building control.

ADDITIONAL OPTIONS:

Multiple stairwells can be controlled from a single 4-zones LL-EVO panel, additional EVO-4X, EVO-8X expansion panels available for up to 16 zones.

Additional LightSync switch stations as needed up to 32.

LL-EVO control panel can connect to ILC network for building control.

Optional Photosensor daylight control for window lit stairwell.

Emergency lighting control bypass relay for UL-924 can be added as needed.

CODE REQUIREMENTS SUPPORTED:

Partial Auto-Off from Occupancy sensor
Multi-Level Dimming control
Time Schedule stand-alone or network
Local Switch control w/dimming

WIRE LEGEND

	Line voltage
	0-10V Dimming
	CAT-5e Data cable
	3-Wire Occupancy Sensor or Photo Cell

Bill Of Material:

Qt:	Product:	Description:
1	LL-EVO	EVO Controller
1	R20D	Remote 20Amp Dimming relay
1	LSG3-WH-1-MZD	LightSync G3 1-Zone dimming digital switch station.
2	ILC-SWX-421-1	Wall Occupancy sensor Dual Tech - Wide View