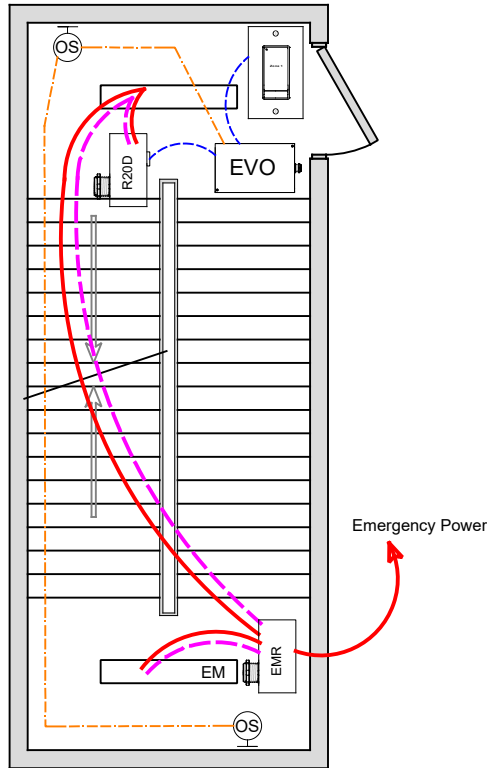


STAIRWELL

ASHRAE DESIGN GUIDE 90.1 - 2013



OVERVIEW:

Lighting zone is controlled with 0-10V dimming, programmable max/min levels, vacancy-dim level, local digital control stations.

SEQUENCE OF OPERATION:

Occupancy sensor input set for On-100% (or desired max level), vacancy dim to 50%(or min set level). Occupancy inputs change operation for Open-Day high/low and Closed-Night On-100%/Off. Internal Real Time Clock operation with Astro option or LightLEEDer Network clock sync for building control. Dimmer outputs provide smooth full range control, zones can be set for adjustable start level from occupancy or digital switch. Digital switch station provides individual zone High/Low. Optional digital key switch, hardwire key switch or maintained override switch.

ADDITIONAL OPTIONS:

Multiple stairwells can be controlled from a single 4-zones LLEVO panel, additional LSEVO-4X, -8X expansion panels available for up to 20 zones.

Additional LightSync switch stations as needed up to 32.

LLEVO control panel can connect to ILC network for building control.

Optional Photosensor daylight control for window lit stairwell.

Emergency lighting control bypass relay for UL-924 can be added as needed.

CODE REQUIREMENTS SUPPORTED:

Partial Auto-Off from Occupancy sensor
Multi-Level Dimming control
Time Schedule stand-alone or network
Local Switch control w/dimming

WIRE LEGEND

	Line voltage
	0-10V Dimming
	CAT-5e Data cable
	3-Wire Occupancy Sensor or Photo Sensor

Bill Of Material:

Qt:	Product:	Description:
1	LLEVO	EVO Controller
1	R20D	Remote 20Amp Dimming relay
1	EMR	Emergency Relay UL924 with 0-10V dimming bypass
1	LSG3-WH-1	LightSync G3 1-Zone Non-Dim digital switch station.
2	ILC-SWX-421-1	Occupancy sensor wall Dual Tech - Wide View

LLEVO Pre-Program: F9