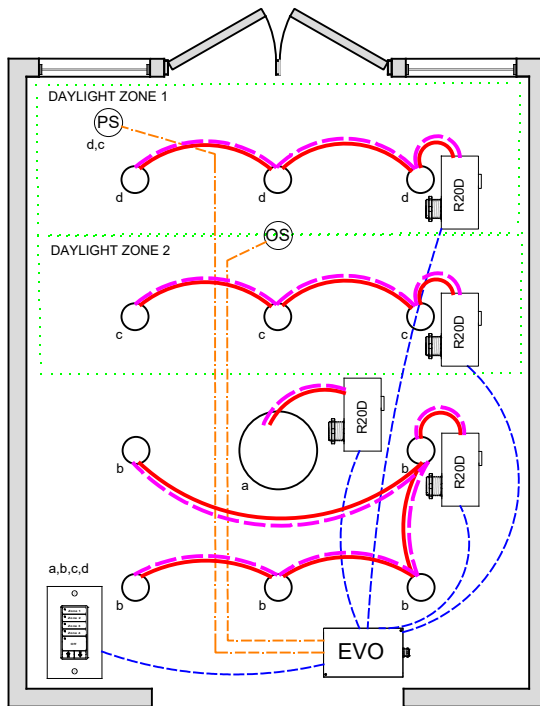


LOBBY

ASHRAE DESIGN GUIDE 90.1 - 2013



OVERVIEW:

Lighting zones are controlled together or individually with 0-10V dimming, programmable max/min levels, occupancy on-off, local digital control station.

SEQUENCE OF OPERATION:

Lights turn on at digital switch station. Occupancy sensor input set for on-off control, can be changed to on/off with adjustable dim level per zone. Dimmer outputs provide smooth full range control, zones can be set for adjustable start level from occupancy or digital switches. Digital switch station for MZD with individual zone on/off control and dimming. Photo Sensor monitors daylight and limits the maximum light level in the daylight zone, multiple zones can be controlled from one sensor with independent level settings for each. (Not required for spaces without side lit area <math>< 250\text{Ft}^2</math>).

ADDITIONAL OPTIONS:

Up to 4-zones with single LLEVO panel, additional LSEVO-4X, -8X expansion panels available for up to 20 zones. Additional LightSync switch stations as needed up to 32. Optional LightSync Touch Screen station with multi-zone relay and dimming control. LLEVO control panel can connect to ILC network for building control. Emergency lighting control bypass relay for UL-924 can be added as needed.

CODE REQUIREMENTS SUPPORTED:

Auto-on/off from Occupancy sensor
Multi-Level Daylight control
Local Switch control w/dimming

WIRE LEGEND	
	Line voltage
	0-10V Dimming
	CAT-5e Data cable
	3-Wire Occupancy Sensor or Photo Sensor

Bill Of Material:		
Qt:	Product:	Description:
1	LLEVO	EVO Controller
4	R20D	Remote 20Amp Dimming relay
1	LSG3-WH-4-MZD	LightSync G3 4-MZD dimming digital switch station.
1	PS-IND	Photo Sensor - Indoor.
1	ILC-SWX-221-1	Occupancy sensor ceiling Dual Tech - 500sf

LLEVO Pre-Program: F2