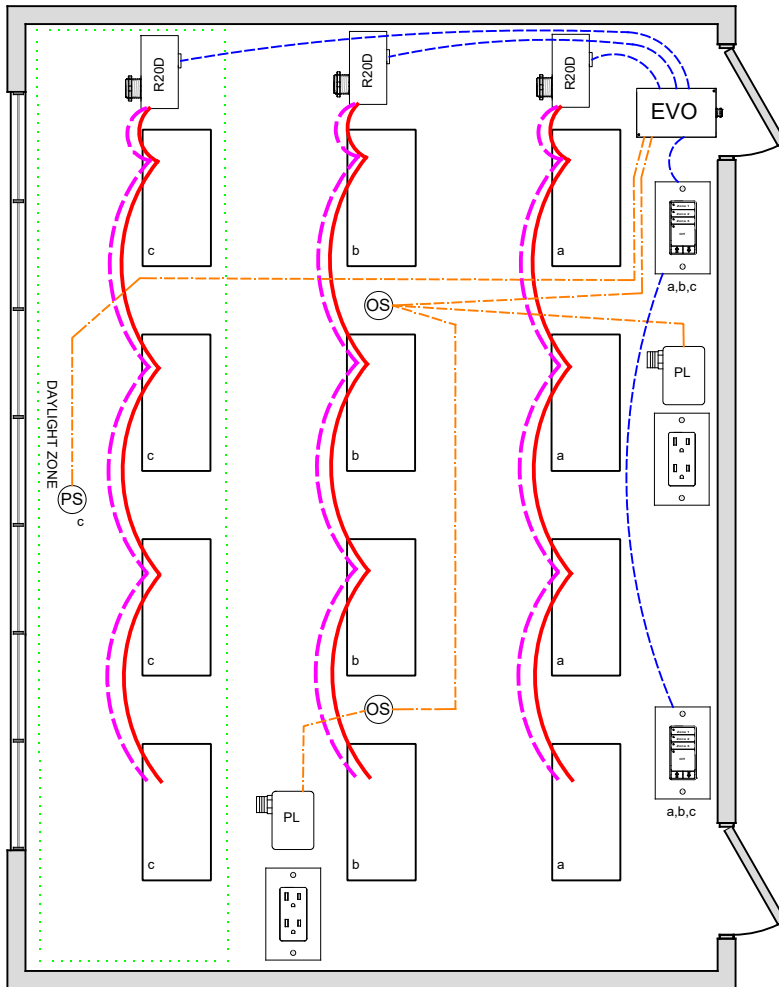


OPEN OFFICE ASHRAE DESIGN GUIDE 90.1 - 2013



WIRE LEGEND	
	Line voltage
	0-10V Dimming
	CAT-5e Data cable
	3-Wire Occupancy Sensor or Photo Sensor

Bill Of Material:		
Qt:	Product:	Description:
1	LLEVO	EVO Controller
3	R20D	Remote 20Amp Dimming relay
2	LSG3-WH-3-MZD	LightSync G3 3-Zone dimming digital switch station.
1	PS-IND	Photo Sensor - Indoor.
2	ILC-SWX-221-1	Occupancy sensor ceiling Dual Tech - 500sf
2	ILC-SWX-900-AX	Plug Load power pack

LLEVO Pre-Program: F1

OVERVIEW:

Lighting zones are individually controlled with 0-10V dimming, programmable max/min levels, daylight zones, occupancy on/off and plug-load control, local digital control stations.

SEQUENCE OF OPERATION:

Lights Automatically turn on with occupancy sensor, or can be turned on at digital switch station. Sensor input can be changed to off-only for vacancy operation. Dimmer outputs provide smooth full range control, zones can be triggered to 50% dimmer level from occupancy or digital switch, adjustable start level and local control.

Digital switch station provides individual zone on/off control and dimming, plus dimming all zones as one.

Photo Sensor monitors daylight and limits the maximum light level in the daylight zone, multiple zones can be controlled from one sensor with independent level settings for each.

Plug load relays are auto-on/off from occupancy, or R20 relay from EVO time clock.

ADDITIONAL OPTIONS:

Up to 4-zones with single LLEVO panel, additional LSEVO-4X, -8X expansion panels available for up to 20 zones.

Additional LightSync switch stations as needed up to 32. Optional LightSync Touch Screen station with multi-zone relay and dimming control. LLEVO control panel can connect to ILC network for building control.

Emergency lighting control bypass relay for UL-924 can be added as needed.

CODE REQUIREMENTS SUPPORTED:

- Auto-Off from Occupancy sensor
- Multi-Level Dimming control
- Multi-Level Daylight control
- Local Switch control w/dimming
- Plug-Load control