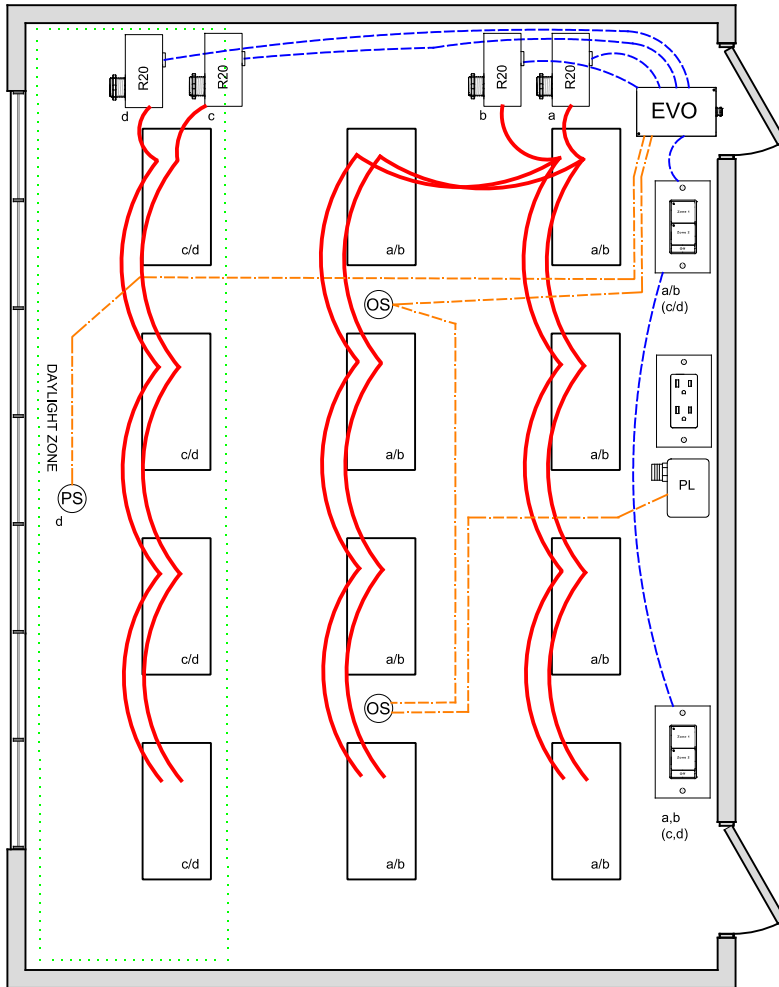


# CLASSROOM ON/OFF - A/B SWITCHING WITH DAYLIGHT IECC 2021 DESIGN GUIDE



## OVERVIEW:

The A/B Lighting zones are individually controlled with 2 relays, Occupancy On/Off, local digital control stations.

## SEQUENCE OF OPERATION:

Lights turn on at digital switch station, providing A/B control for three light levels 0%, 50% and 100%. Occupancy sensor input set for On/Off control  
 Digital switch station provides individual 2-zone on/off control  
 Photo Sensor monitors daylight and limits the maximum light level in the daylight zone by switching off load "d". Supports multiple daylight zones (8) with independent on/off setpoints per zone. (not required in areas without windows or rooms having loads <105W in sidelight area)

## ADDITIONAL OPTIONS:

Up to 4-zones with single LLEVO panel, additional LSEVO-4X, -8X expansion panels available for up to 20 zones. Additional LightSync switch stations as needed up to 32. LLEVO control panel can connect to ILC network for building control (C405.2.2.1).

Emergency lighting control bypass relay for UL-924 can be added as needed.

**CODE REQUIREMENTS SUPPORTED:**  
 Auto On-50% /Off from Occupancy sensor (C405.2.1.1)  
 Lighting Reduction (C405.2.3.1)  
 Automatic receptacle control ( C405.11.1)

WIRE LEGEND	
	Line voltage
	CAT-5e Data cable
	3-Wire Occupancy Sensor or Photo Sensor

Bill Of Material:		
Qt:	Product:	Description:
1	LLEVO	EVO Controller
4	R20D	Remote 20Amp Dimming relay
2	LSG3-WH-2	LightSync G3 2-Zone ON/Off digital switch station.
1	PS-IND	Photo Sensor - Indoor.
2	ILC-SWX-221-1	Occupancy sensor ceiling Dual Tech - 500sf
1	ILC-SWX-900-AX	Plug Load power pack

LLEVO Pre-Program: F2