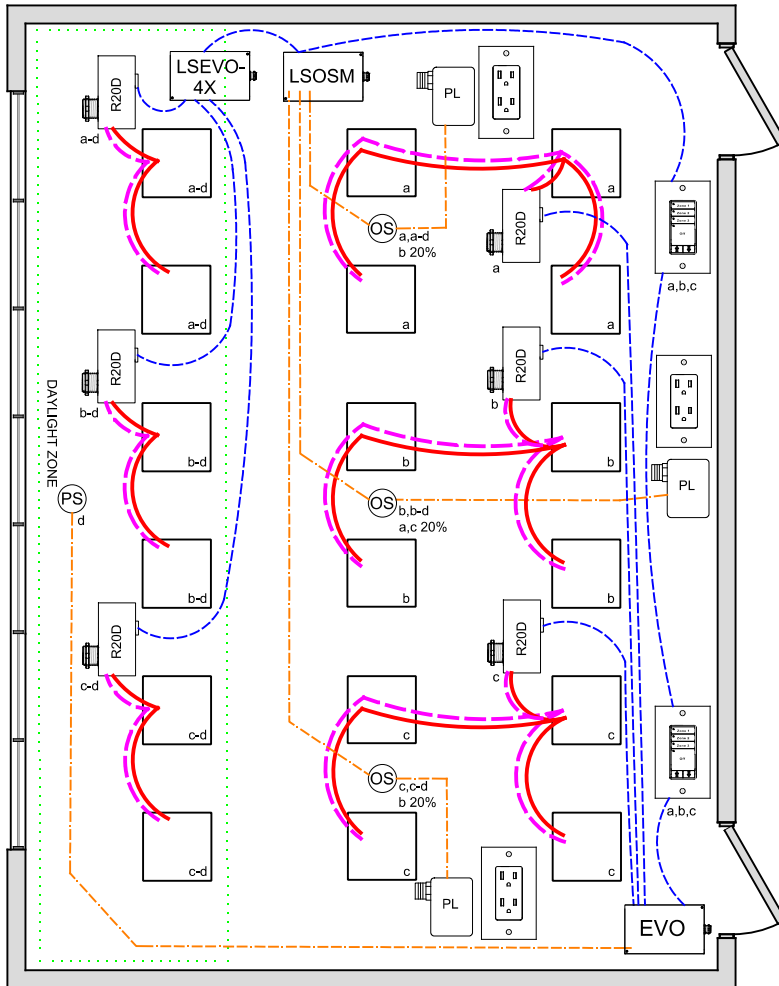


OPEN OFFICE GENERAL LIGHTING PERMITTED ADJACENT OVERLAP CONTROL IECC 2021 DESIGN GUIDE



WIRE LEGEND	
	Line voltage
	0-10V Dimming
	CAT-5e Data cable
	3-Wire Occupancy Sensor or Photo Sensor

Bill Of Material:		
Qt:	Product:	Description:
1	LLEVO	LLEVO Controller
1	LSEVO-4X	LSEVO 4 Distributed Controller
6	R20D	Remote 20Amp Dimming relay
2	LSG3-WH-3-MZD	LightSync G3 3-Zone dimming digital switch station.
1	PS-IND	Photo Sensor - Indoor.
1	LSOSM	LightSync Occupancy Module
3	ILC-SWX-221-1	Occupancy sensor ceiling Dual Tech - 500sf
3	ILC-SWX-900-AX	Plug Load power pack

OVERVIEW:

Open Office - Overlapping occupancy an daylight zones with motions sensors, digital switch stations, and plug load control.

IECC-2021 - General Lighting is permitted to be turned on at 100% from occupancy, adjacent zones are permitted to be turned on at 20%. All off after 20 minutes of vacancy in all zones. Each control zone must be less than 600 square feet.

SEQUENCE OF OPERATION:

Lights turn on at digital switch station or occupancy sensor drives the lights to 100% and adjacent vacant zone to 20%. all Zones must be vacant for 20 minutes before turning all zones Off. Dimmer outputs provide smooth full range control, digital switch station provides individual zone on/off control and selectable zone dimming, plus dimming for all zones as one.

Photo Sensor monitors daylight and limits the maximum light level in the daylight zone, multiple zones can be controlled from one sensor with independent level settings for each.

ADDITIONAL OPTIONS:

Up to 4-zones with single LLEVO panel, additional LSEVO-4X, -8X expansion panels available for up to 20 zones. Additional LightSync switch stations as needed up to 32. LLEVO control panel can connect to ILC network for building control (C405.2.2.1).

Emergency lighting control bypass relay for UL-924 can be added as needed.

CODE REQUIREMENTS SUPPORTED:

Open Office General lighting permitted operation for overlapping adjacent zones (C405.2.1.3 #2)
Daylight control (C405.2.4)
Automatic receptacle control (C405.11.1)