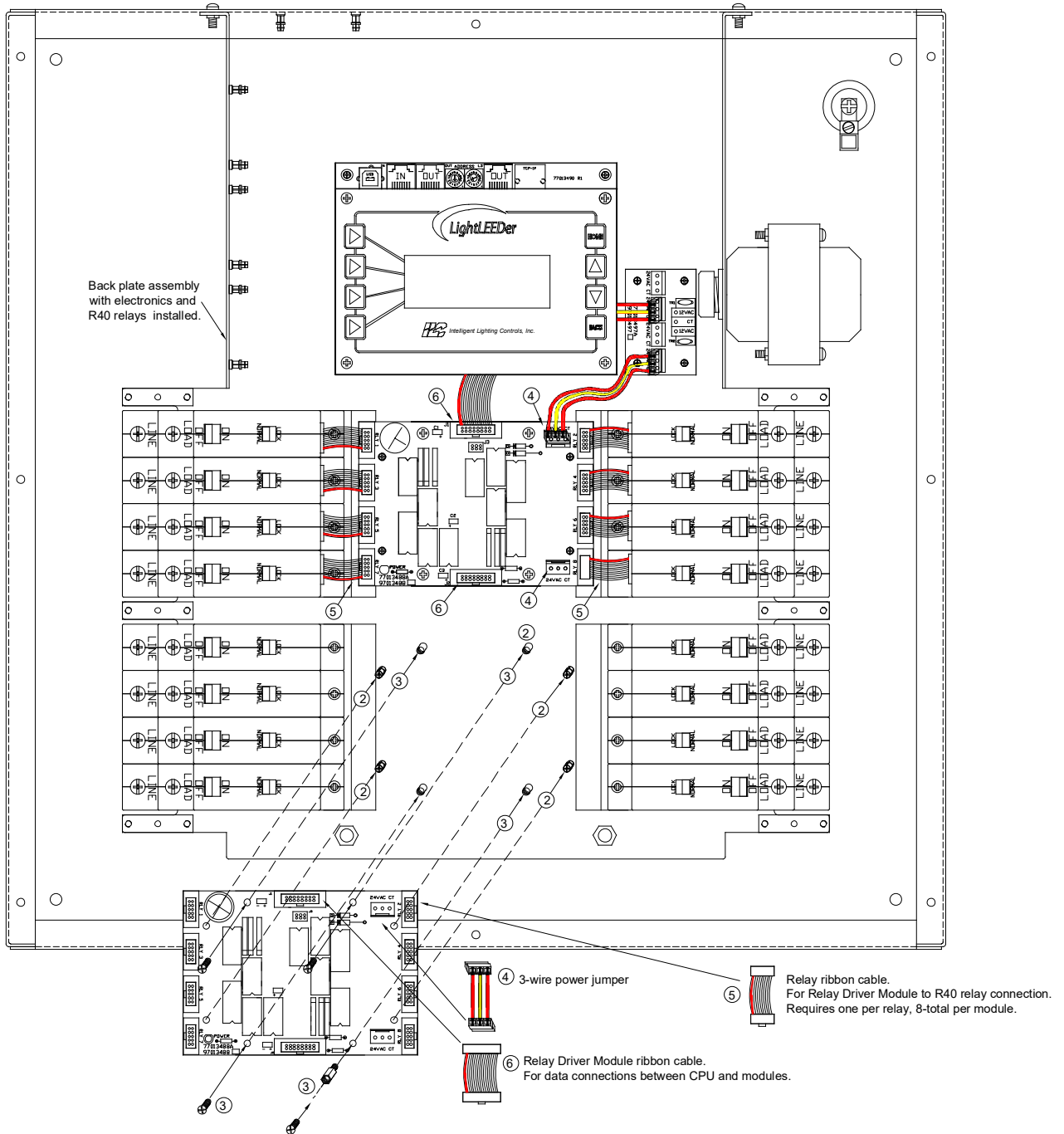


# LightLEEDer Relay Driver Module Installation Details



## Installing a LightLEEDer Relay Driver Output Module

1. Turn the power switch to the LightLEEDer Controller OFF, located under the lower right hand corner of the keypad.
2. Align Relay Driver Output Module with the 4 push-to-connect standoffs on the back plate and gently snap into place.
3. Secure the module with 4 - #6 screws, or standoffs if an input module is to be mounted to this board.
4. Install the provided 3-wire power jumper from the last Relay Driver Output Module to the new Relay Driver Module.
5. Connect each of the relays to the corresponding port on the module using the 10-pin keyed ribbon cables.
6. Interconnect the output module data with the 16-pin ribbon cable between CPU or Relay Driver Module.
7. Turn the power switch on the Controller ON, verify the Relay Driver Module is operating properly.