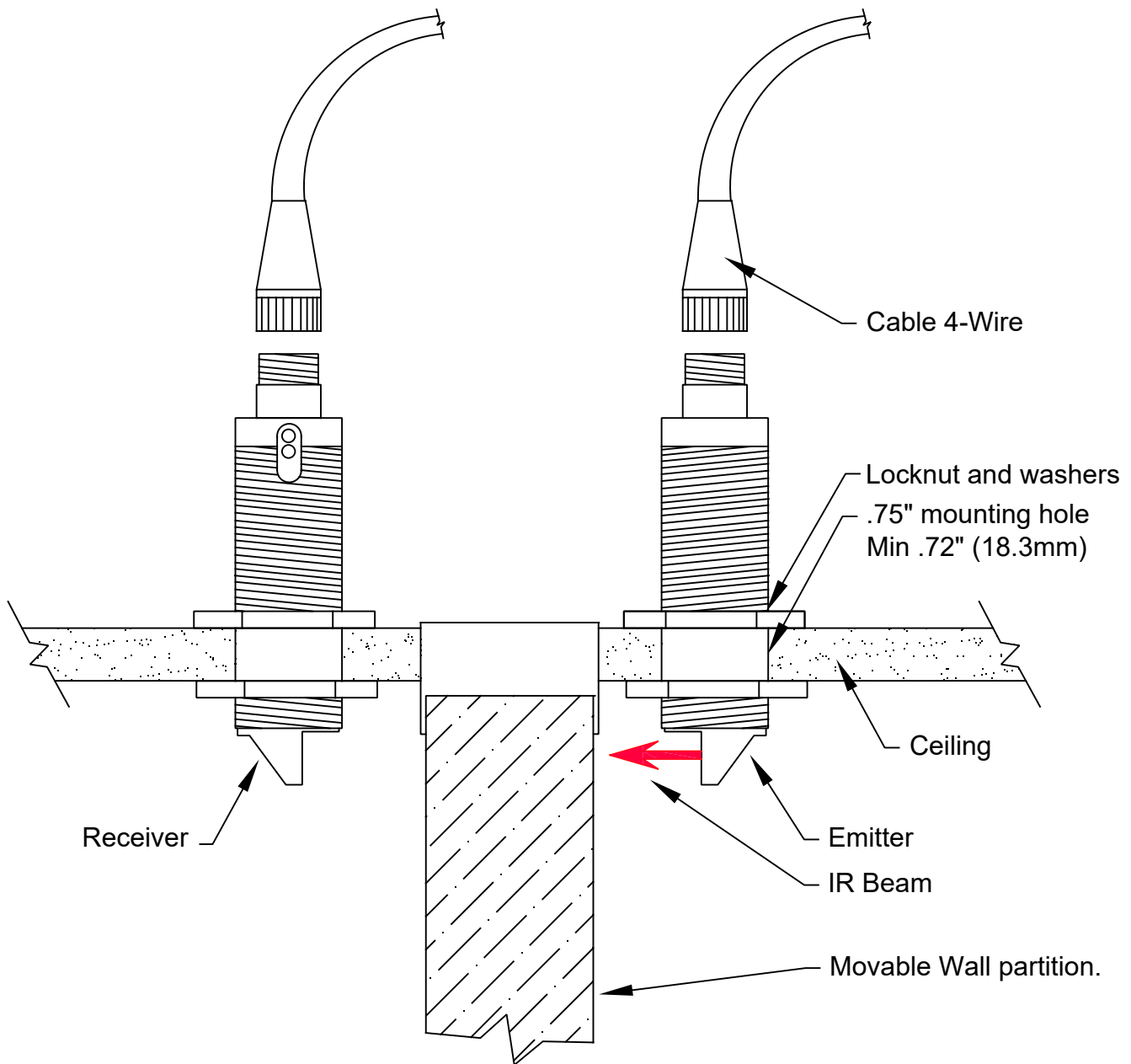


ILC Photoelectric Partition Sensor Installation Details



Install Photoelectric partition sensors in ceiling on both sides of movable wall partition by drilling a .75" hole and securing sensors with the locknut and washers provided.

Attach the 6.5" cable using the screw on M12 connector and extend to LSCOS8I module, refer to WD1700 for wiring connections.

Align sensors for proper operation