



WIRELESS REMOTE DIMMER & SWITCH

BATTERY POWERED

OVERVIEW

The **Intelligent Lighting Controls** remote dimming and on/off wall stations are battery powered devices that provide manual operation of wirelessly controlled lighting. These attractive wall stations greatly reduce total installation time and wireless pairing fuss. Requiring just a few seconds per device, **ILC** wireless sensors can be linked to one or more wireless load controllers (such as the **ILC-SWX-851** wireless wall switch, or a **ILC-SWX-950** series wireless power pack). Additionally, these devices can be configured to work together with other wireless or wired wall stations to provide dimming and switching control from multiple locations.

FEATURES

- Pairs in Seconds with Wireless Controllers
- 10 Year Battery Life Design
- Decorator Style Fits Common Wall Plates (not included)
- Matches Styling of other SWX Sensors & Wired Wall Stations
- Enables Multiway Switching & Dimming (e.g., 3-way, 4-way)
- Intuitive Operation

SPECIFICATIONS

ELECTRICAL & WIRELESS

BATTERY TYPE
Requires one CR123(A) Lithium Battery (provided in box)

BATTERY LIFE
Designed for 10 Year Life
Non-Volatile Memory (saves all settings regardless of battery state)
Blink Warning @10% Life

RANGE
80' line of site w/o obstruction (walls)
40' with obstruction (walls/floors)

FREQUENCY
915 MHz ISM Band

WIRELESS LINKING
Simple 3 sec. Push Button Process

SECURITY
All Wireless Data is Encrypted

CODE COMPLIANCE

These switches can be used to meet ASHRAE 90.1, IECC, & Title 24 energy code requirements.

ENVIRONMENTAL

OPERATING TEMP
32°F to 122°F (0°C to 50°C)

RELATIVE HUMIDITY
0-95% Non-Condensing,
Indoor Use Only

PHYSICAL

SIZE
2.74"H x 1.68"W x 1.39"D
(6.96 x 4.27 x 3.53 cm)
Fits Decorator Switch Plate Opening

WEIGHT
2.5 oz

MOUNTING
Single Gang Switch Box

MISC

COMPATIBLE LOAD CONTROLLERS
ILC-SWX-851 Wall Switch
ILC-SWX-950 Series Power Packs



ORDERING INFO

SAMPLE MODEL # ILC-SWX-854-B-WH

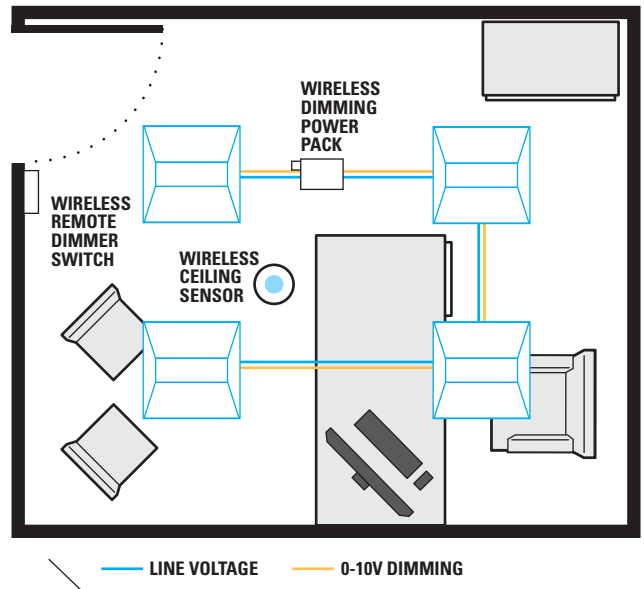
MODEL & DESCRIPTION	COLOR *	PACKAGE COUNT
ILC-SWX-854-B Wireless Remote Dimming & On/Off Wall Station, Battery Powered	White - WH Light Almond - LA Ivory - IV Gray - GY	10 Pack - J10
ILC-SWX-852-B Wireless Remote 2 Button On/Off Wall Station, Battery Powered	White - WH Light Almond - LA Ivory - IV Gray - GY	
ACCESSORY PART #	COLOR *	PACKAGE COUNT
ILC-SWX-199 Single Gang Wall Plate	White - WH Light Almond - LA Ivory - IV Gray - GY	10 Pack - J10

*Wallplate not included

APPLICATIONS

Adding a wireless remote wall switch to a room controlled by a wireless power pack (**ILC-SWX-950**) and a wireless sensor (e.g. **ILC-SWX-201-B**) enables code compliant vacancy (manual on) operation. When linked with a wireless dimming power pack (**ILC-SWX-950-D2**), a remote wireless dimmer is perfect for providing user control of 0-10V dimmable lighting. Additional remote dimmer switches can be linked enabling user control from multiple locations. Linking a remote wireless switch to a wireless wall switch load controller (**ILC-SWX-851**) enables 3-way user control as well.

- Classrooms
- Open Areas
- Conference Rooms
- Hallways
- Small Offices
- Copy Rooms
- Private Restrooms
- Break Rooms



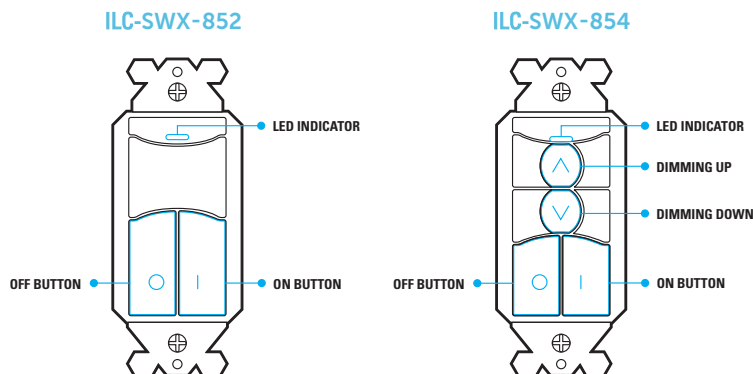
COMPATIBLE WIRELESS DEVICES

The below chart lists the devices that can be used in an **Intelligent Lighting Controls** wireless application. Note that sensors and remote switch & dimmer devices are transmit only devices and therefore must be linked to a load controller for switching or dimming of lighting.

MODEL #	DESCRIPTION	WIRELESS TYPE	POWER TYPE
ILC-SWX-201-B	Small Motion 360° Sensor, PIR	Transmit	Battery
ILC-SWX-401-B	Wide View Sensor, PIR	Transmit	Battery
ILC-SWX-402-B	Long Range Hallway Sensor, PIR	Transmit	Battery
ILC-SWX-851-xx	Wall Switch Load Controller, No Neutral Required, <xx = color>	Transmit & Receive	120-277 VAC
ILC-SWX-852-B-xx	Remote Switch (On/Off), <xx = color>	Transmit	Battery
ILC-SWX-854-B-xx	Remote Dimming Switch (On/Off, Raise/Lower), <xx = color>	Transmit	Battery
ILC-SWX-950	Power Pack Load Controller, 20A	Receive	120/277 VAC
ILC-SWX-950-D2	Power Pack Load Controller, 20A, 0-10V Dimming	Receive	120/277 VAC
ILC-SWX-950-AX	Hybrid Wireless/Wired Power Pack Load Controller, 20A	Transmit & Receive	120/277 VAC
ILC-SWX-950-AX-D2	Hybrid Wireless/Wired Power Pack Load Controller, 20A, 0-10V Dimming	Transmit & Receive	120/277 VAC

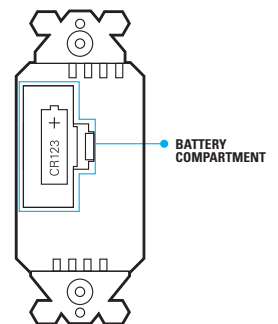
INSTALLATION

- Designed to mount in 1-gang wall box with 3.28" hole spacing.
- Units can also share multiple gang wall boxes with other devices.



BATTERY INFORMATION

- The switch/dimmer runs on one CR123(A) Lithium Battery (included).
- Install battery prior to mounting. Polarity is indicated on the battery compartment door.
- If the unit's battery life reaches 10%, the LED will rapidly blink blue after every button press.
- Replacement batteries are available at most retailers or home centers where batteries are sold or from **ILC**.



OPERATION NOTES

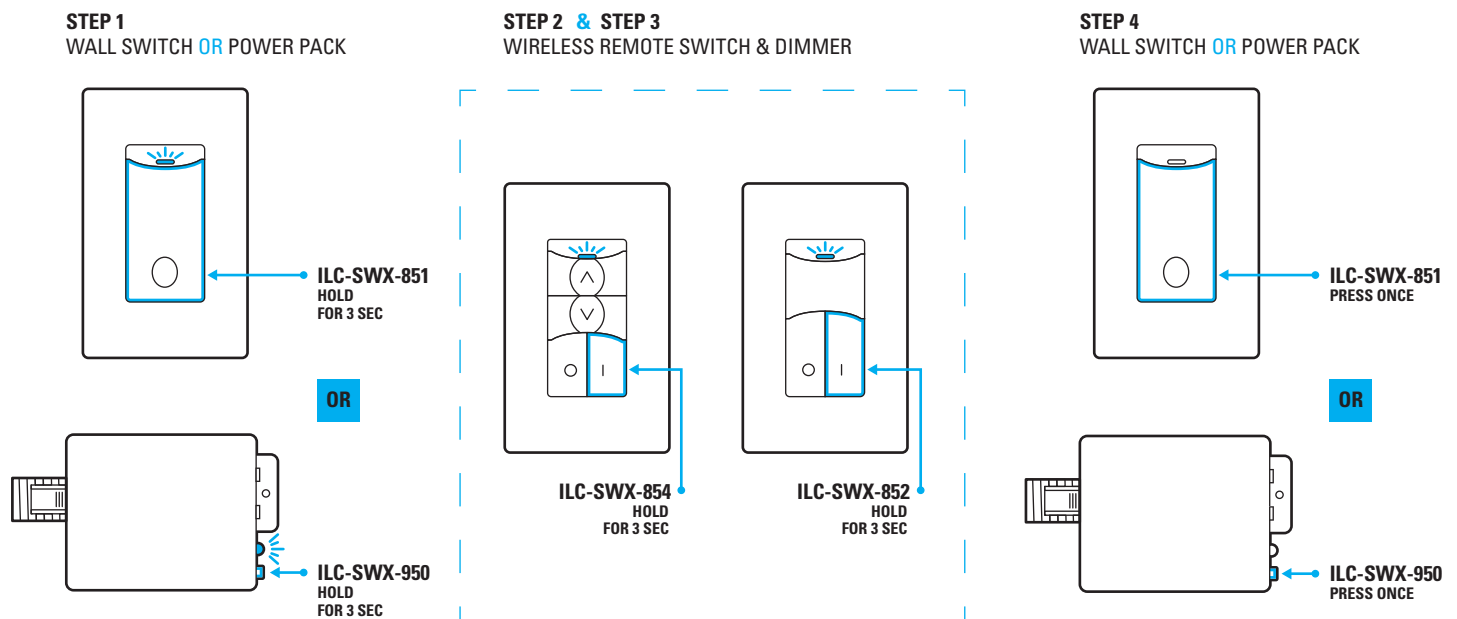
- Wireless remote switches and dimmers only transmit when a button is being pressed.
- The unit's blue LED will light only when a button is pressed.
- The dim up and dim down buttons may be held down to increase dimming rate.

WIRELESS PAIRING

Pairing a remote dimmer/switch with a wireless wall switch load controller or power pack load controller is quickly done via the following procedure:

1. Enter pairing mode by holding down the wireless load controller's button for 3 seconds until the LED starts alternating white then blue.
2. At the battery powered remote dimmer/switch, hold down the ON button for 3 seconds until the LED starts alternating white then blue. Releasing will pair the device with the controller in pairing mode (see note 1 below). The lights will toggle once as confirmation.
3. If additional remote dimmers or switches need to be linked, repeat step 2.
4. When all devices have been paired, close pairing mode on the wireless load controller by pressing the button 1 time. Pairing will also be automatically closed after 15 minutes of no new devices being linked.

Note 1: When in pairing mode, the alternating LED colors on the wireless load controller will periodically pause and blink out the total number of paired devices. There will be no blinks during the pause until the first device is linked.



FCC INFORMATION (FCC ID: 2AVRY-SWX0001)

This device complies with Part 15 of the FCC Rules. Operation is subject to the following conditions:

1. This device may not cause harmful interference, and
2. This device must accept any interference received, including interference that may cause undesired operation

Changes and Modifications not expressly approved by BLP Technologies can void your authority to operate this equipment under Federal Communications Commission's rules.

INDUSTRY CANADA INFORMATION (IC: 26012-SWX0001)

This device complies with Industry Canada license-exempt RSS standard(s). Operation is subject to the following two conditions: (1) this device may not cause interference, and (2) this device must accept any interference, including interference that may cause undesired operation of the device.

Le présent appareil est conforme aux CNR d'Industrie Canada applicables aux appareils radio exempts de licence. L'exploitation est autorisée aux deux conditions suivantes : (1) l'appareil ne doit pas produire de brouillage, et (2) l'utilisateur de l'appareil doit accepter tout brouillage radioélectrique subi, même si le brouillage est susceptible d'en compromettre le fonctionnement.