

## LightLEEDer

## LightLEEDer-EVO-RC

## Overview

The LightLEEDer-EVO-RC is a distributed lighting control panel that is designed to be an extension of any LightLEEDer panels including the LL-EVO panel. This panel operates the R20 style relays that connect using a standard CAT-5 cable. The remote mounted R20 relay is suitable for lighting or plug-load use. It has integrated electronics for controlling up to four R20D relays with 0-10V galvanically isolated dimming, four occupancy sensor zones, two inputs for photocell heads and a local LightSync port for up to two 6-button data line switches. The LL-EVO-RC can operate as an expansion or a standalone panel using the free software to program. The remote mounted R20D relay has both line voltage and the 0-10V dimming control wire leads for easy wiring.



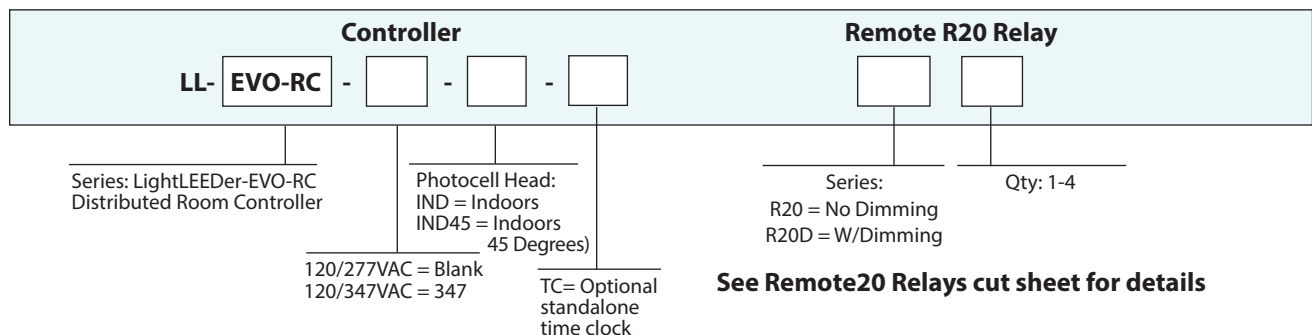
## Features

- **Made in the USA**
- **Digital CAT-5 Ready**
- **Distributed** lighting controller
- **Outputs** for up to 4 R20 relays
- **Plug-load** compatible
- **Remote** mounted relay for direct connection to loads
- **Galvanically Isolated** 0-10 dimming for 4 zones
- **Status LED and Override** buttons for remote relay control
- **Standalone** or networked with any LightLEEDer controller
- **Time clock** includes 7/365-day calendar, Daylight Savings Time, Astronomic, Open/Close
- **200mA** power provided for occupancy or vacancy sensors inputs
- **RJ45 connectors** for networking, CAT-5 devices, and R20 relays
- **Enclosure**, suitable for plenum mounting

## Warranty

Six-year limited warranty

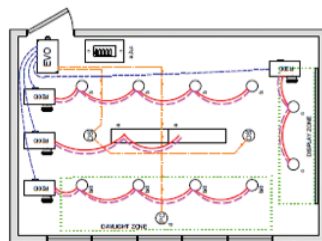
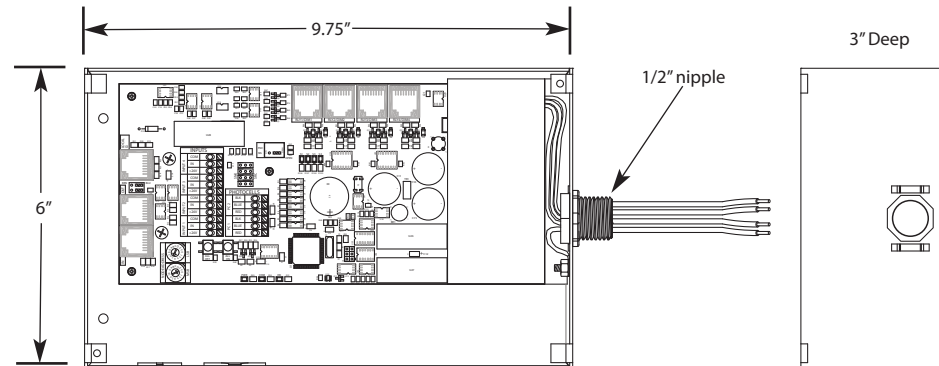
## Ordering




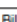


## LightLEEDer

## LightLEEDer-EVO-RC

## Physical



WIRE LEGEND	
	Line voltage
	0-10V Dimming
	CAT-5e Data cable
	3-Wire Occupancy Sensor or Photo Cell

Bill Of Material:		
Qt	Product	Description
1	LL-EVO	EVO Controller
4	R20D	Remote 20-Amp Dimming relay
2	LD02-W-5-4KZD3	LightSync G2 3-Zone dimming digital switch station.
1	PC-IND	Photo Cell - Indoor.
2	ILC-SWX-221-1	Occupancy sensor Ceiling Dual Tech - 500sf

## Specifications

**Safeguards:**

- Power surge and spike suppression up to 123 volts on the 20VAC power input to controller
- Memory retention for firmware and programming up to 200 years and electrostatic discharge to 4kv
- Real time clock retention 45 days or greater without power
- Galvanically isolation to 1500V for the 0-10VDC dimmer outputs, with revert to 100% on power loss

**Physical:**

- Enclosure: 9-3/4"x 6"x 3" NEMA 1
- Galvanized steel enclosure and screw cover
- Provided with pre-drilled mounting holes
- High voltage barrier separates Class 2 wiring
- 1/2" nipple for mounting to electrical box
- 6" wire leads for high voltage connections
- Push to connect low voltage terminals
- Color coded labels for easy terminal identification
- RJ45 connectors provide for easy connection
- Enclosure, suitable for plenum mounting

**Integrated Interfaces:**

- 4 inputs for hardwire switches or occupancy sensors
- Photocell controller for 2 sensor heads or zones
- RJ-45 port for up to 61 ILC CAT-5 devices
- 4 RJ-45 ports for R20 remote relays

**Electrical:**

- 120/277VAC @.6 amps (120/347VAC Optional)
- Input: 24 VDC (See below for details)
- Dimming: 100mA sink

**Powered Devices/Distance/Input Power Draw:**

- 4 CAT-5 devices, 400' accumulative feet, 200mA occupancy sensor power
  - 5 CAT-5 devices, 500' accumulative feet, 160mA occupancy sensor power
  - 6 CAT-5 devices, 600' accumulative feet, 120mA occupancy sensor power
  - 7 CAT-5 devices, 700' accumulative feet, 90mA occupancy sensor power
  - 8 CAT-5 devices, 800' accumulative feet, 60mA occupancy sensor power
- Additional LightSync devices can be supported by adding a PSR.*

**Operating Environment:**

- Location: Interior space
- Operating Temperature: 0° to 50° C
- Humidity: 10% - 90% Non-condensing
- Atmosphere: Non-explosive/corrosive
- Vibration: Stationary

**Certifications and Approvals:**

- UL and CUL listed
- FCC Part 15
- Title 24
- ASHRAE compliant
- IECC compliant