

LightLEEDer

LightLEEDer- 8 -16 -24 -32 -40 -48 PCI Retrofit Insert

Overview

A LightLEEDer-8 -16 -24 -32 -40 -48 PCI Retrofit Insert can take your present outdated or failing PCI-LiteKeeper, SwitchKeeper, WatchKeeper, DMXKeeper, ControlKeeper lighting control system and get it up to today's standards. All of the enhanced features of the LightLEEDer system will be available with this retrofit system from LightSync switches to BAS control. Upgrades are as simple as removing the existing hardware and replacing it with the LightLEEDer hardware provided on a single back plate insert for the controller assembly, and each 8-relay assembly. Reuse existing enclosure, conduit, and wiring. The LightLEEDer programmable lighting controller retrofit insert provides a dependable, flexible, and energy savings controller featuring the robust Reliant40 relay.

Note: THIS RETROFIT KIT INCLUDES R40-1 RELAYS AS PART OF THE PANEL ORDER.



LLPCIRI-16

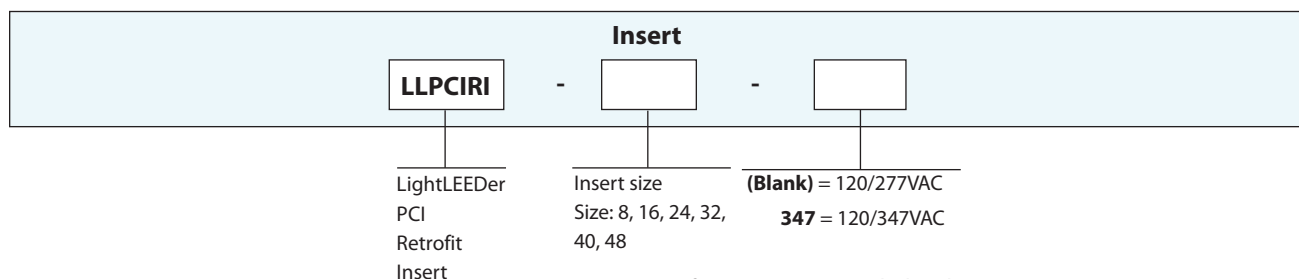
Features

- **Made in the USA**
- **Digital CAT-5 Ready**
- **Controller Electronics Assembly, Relay Assembly and Transformer** provided.
- **Reuse** existing enclosure and door
- **Installs** directly in an existing PCI enclosure
- **Conduit** and wiring can be reused
- **Capacities** of up to 8, 16, 24, 32, 40, 48 relays
- **Controller Assembly** mounts directly in place of PCI electronics
- **Relay Assembly** mounts directly on existing relay board screw studs and include 8 R40-1 relays per assembly
- **Relays** are the superior Reliant40 design
- **Optional** inputs for switches and occupancy sensors
- **Standalone** or networked controls
- **Networked** with CAT5 cable
- **BAS/EMS** interface options
- **Compatible** with standard LightLEEDer panels
- **Same features** as the LightLEEDer controller
- **Meets** current energy code requirements

Warranty

Five-year limited warranty

Ordering



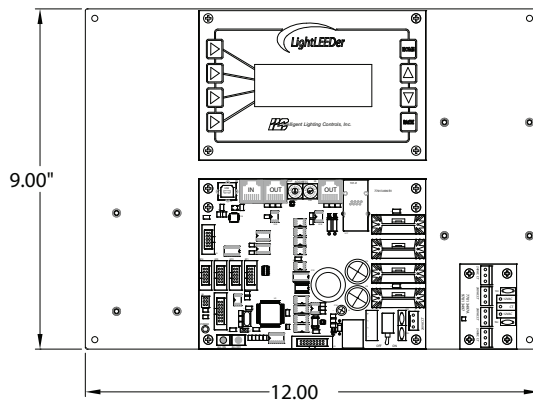
Note: Retrofit Inserts are provided with sets of 8-relay assemblies that include 8 R40-1 relays each.

LLPCIRI-xx
2-15-2024 Rev.D

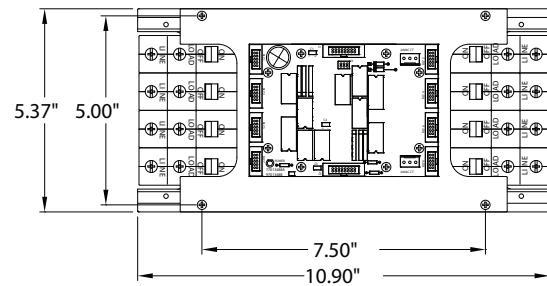
LightLEEDer

LightLEEDer- 8 -16 -24 -32 -40 -48 PCI Retrofit Insert

Physical



Controller Assembly



Relay Assembly With 8 R40-1 Relay

Specifications

Relays:

- Superior latching relays
- Switch type override control
- Lockout feature disables control from panel
- 40 Amps @ 120, 277, 347 VAC
- SCCR to 18,000 symmetrical amps
- 1, 2, or 3 pole configurations

Safeguards:

- Power surge and spike suppression up to 123 volts on the 24VAC power input
- Data line surge and spike suppression up to 8kv direct and 15kv thru air
- Memory retention for firmware and programming up to 200 years and electrostatic discharge to 4kv
- Real-Time-Clock time retention 45 days or greater without power
- Internal memory backup and restore

Physical:

- Controller Assembly: 12"W x 9"H
- Relay Assembly: 10.9"H x 5.37"H
- Double sided construction similar to PCI
- Provided with pre-drilled mounting holes
- High voltage barriers separate Normal/Class2 wiring

Electrical:

- 120/277 VAC @ 1 amps or optional 347 VAC

Capacities:

- Up to 48 single pole relays
- 1 LS input module
- 1 LL Serial module

Operating Environment:

- Location: Interior space
- Operating Temperature: 0° to 50° C
- Humidity: 10% - 90% Non-condensing
- Atmosphere: Non-explosive/corrosive
- Vibration: Stationary

Certifications and Approvals:

- UL and CUL listed
- FCC Part 15
- Title 24
- ASHRAE compliant
- LEED compliant