

LightLEEDer

InSite Software

Overview

LightLEEDer InSite software provides a Windows-based graphical interface that allows monitoring and control of LightLEEDer panels using icons on custom or standard graphical screens. With a simple click of the mouse, or a push on a touchscreen you can control relays, groups, presets, scenes, dimming outputs, or navigate between screens. Screens are simple bitmap pictures that can depict your facility's floorplan layout or simple color backgrounds. Select from a library of load icons for direct status and control; or select control and navigation buttons with options for customizing. InSite provides extensive timer scheduling and sequencing options. It also supports multiple interfaces, and is equipped with user/password protection that contains 5 levels of user access. InSite Software allows control of 1 to 16 LightLEEDer panel networks, works seamlessly with LightLEEDer Pro panel software, and maintains full time connectivity monitoring with e-mail notification.



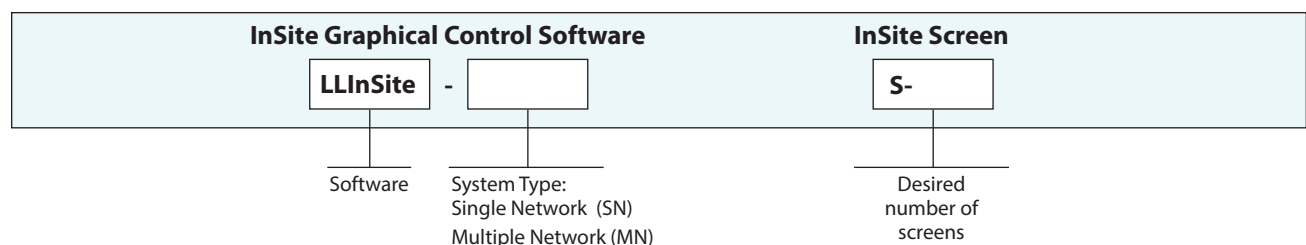
Features

- Graphic screens backgrounds can consist of any bitmap image in virtually limitless numbers
- Control icons are unlimited per screen and can be chosen from an extensive library or Custom Control Icons can be created and saved as bitmap images
- Control Icons can be edited at any time to include exclude relays, LL groups, presets or dimmer scenes
- Supports 5 levels of user security passwords
- Extensive calendar-based scheduling for up to 400 programmable schedules to automatically control relays, groups, scenes, presets or trigger a sequence
- Supports 5 levels of user security passwords
- Supports multiple computers controlling the same system (1 Main computer, multiple remote computers)
- Multiple Network operation for up to 32 LightLEEDer network controllers linked as one system
- Supports web access via virtual computer
- Automatic Link to LightLEEDer Pro software for programming of panel level operations

Warranty

Six-year limited warranty

Ordering



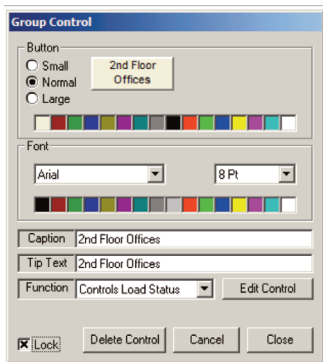
LightLEEDer

InSite Software

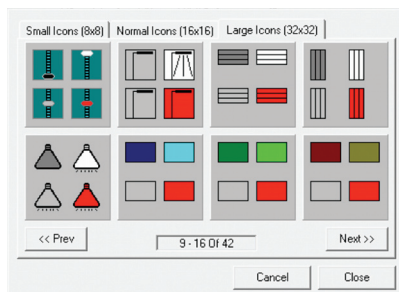
Additional Features

- Set "timers" on graphics objects, so that, they will turn off after a specified time period
- Icons can be set to flash or drive a wave file when a load is turned On or Off to signal user
- Area Flood operation to allow status to change color of a defined section of floor plan
- Sequences with up to 16 transitions over a 12-hour period to turn on/off single relays, groups, set a preset or scene's in a sequence
- Control DMX lighting fixtures and ILC LightLEEDer dimmer outputs
- Supports Runtime software for relays with usage reports and graphic displays
- Update "Remote Computer" graphics to match "Main Computer" with one button push
- ILC InSite can monitor itself and re-start if there is a communication issue with the system
- Automatically send an e-mail to user(s) notifying them of a problem with ILC InSite.
- "Alarms" report if a relay does not turn on or off correctly with real time status updates
- Administrator lock out specific screens for certain users during an event in the facility
- Able to lock/unlock control stations in a facility through ILC LL InSite graphics objects
- Able to view sACN via (no interface needed for viewing) and control sACN through an Interactive Technologies CueServer Interface Add-on

Graphics and Controls



Develop Control or Navigation Buttons



Library of Load Status Icons

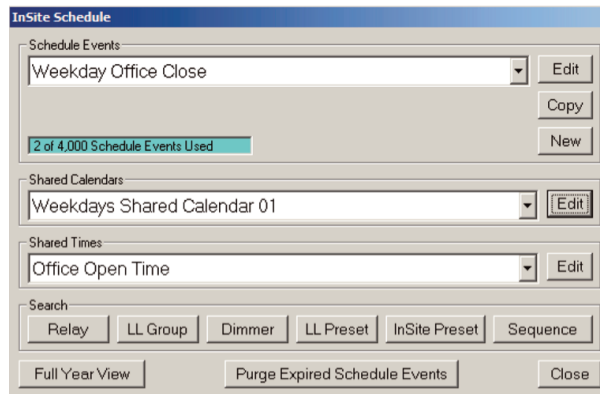


Supports Graphical Background Building Layouts

LightLEEDer

InSite Software

Schedules



InSite Schedule

Schedule Events:
 Weekday Office Close [Edit] [Copy] [New]
 2 of 4,000 Schedule Events Used

Shared Calendars:
 Weekdays Shared Calendar 01 [Edit]

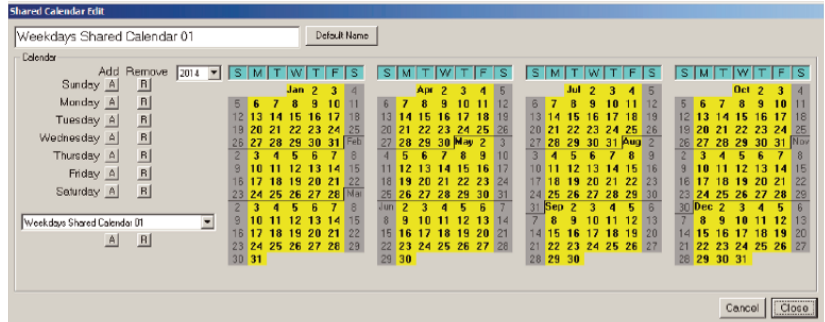
Shared Times:
 Office Open Time [Edit]

Search:
 Relay LL Group Dimmer LL Preset InSite Preset Sequence

Full Year View Purge Expired Schedule Events Close

Extensive Scheduling capability with 4,000 possible events, 16 shared Calendars and 16 shared Times for simplifying the control layout

Search options makes finding scheduled events easy



Shared Calendar Edit
 Weekdays Shared Calendar 01 [Default Name]

Calendar: Add Remove 2014 [S M T W T F S] [S M T W T F S] [S M T W T F S] [S M T W T F S]

Sunday [A] [R] 5 6 7 8 9 10 11 6 7 8 9 10 11 12 6 7 8 9 10 11 12 6 7 8 9 10 11

Monday [A] [R] 12 13 14 15 16 17 18 13 14 15 16 17 18 19 13 14 15 16 17 18 19 12 13 14 15 16 17 18

Tuesday [A] [R] 19 20 21 22 23 24 25 20 21 22 23 24 25 26 20 21 22 23 24 25 26 19 20 21 22 23 24 25

Wednesday [A] [R] 26 27 28 29 30 31 27 28 29 30 31 27 28 29 30 31 27 28 29 30 31 26 27 28 29 30 31

Thursday [A] [R] 2 3 4 5 6 7 8 4 5 6 7 8 9 10 3 4 5 6 7 8 9 2 3 4 5 6 7 8

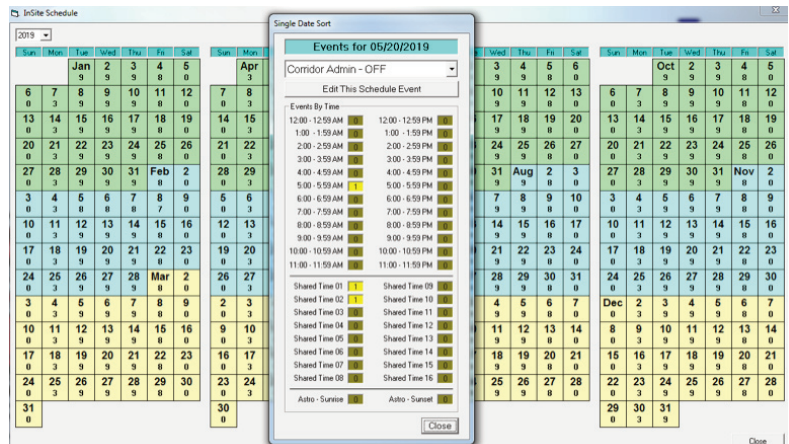
Friday [A] [R] 9 10 11 12 13 14 15 11 12 13 14 15 16 17 10 11 12 13 14 15 16 9 10 11 12 13 14

Saturday [A] [R] 16 17 18 19 20 21 22 18 19 20 21 22 23 24 17 18 19 20 21 22 23 16 17 18 19 20 21

Weekdays Shared Calendar 01 [A] [R] 23 24 25 26 27 28 29 25 26 27 28 29 30 31 24 25 26 27 28 29 30 23 24 25 26 27 28

Cancel Close

Easy to view calendar layout



InSite Schedule
 2019 [Single Date Sort]

Events for 05/20/2019
 Corridor Admin - OFF [Edit This Schedule Event]

Events By Time:
 12:00 - 12:59 PM 12:00 - 12:59 PM
 1:00 - 1:59 PM 1:00 - 1:59 PM
 2:00 - 2:59 PM 2:00 - 2:59 PM
 3:00 - 3:59 PM 3:00 - 3:59 PM
 4:00 - 4:59 PM 4:00 - 4:59 PM
 5:00 - 5:59 PM 5:00 - 5:59 PM
 6:00 - 6:59 PM 6:00 - 6:59 PM
 7:00 - 7:59 PM 7:00 - 7:59 PM
 8:00 - 8:59 PM 8:00 - 8:59 PM
 9:00 - 9:59 PM 9:00 - 9:59 PM
 10:00 - 10:59 PM 10:00 - 10:59 PM
 11:00 - 11:59 PM 11:00 - 11:59 PM

Shared Time 01 Shared Time 09
 Shared Time 02 Shared Time 10
 Shared Time 03 Shared Time 11
 Shared Time 04 Shared Time 12
 Shared Time 05 Shared Time 13
 Shared Time 06 Shared Time 14
 Shared Time 07 Shared Time 15
 Shared Time 08 Shared Time 16

Auto - Sunrise Auto - Sunset

Close

System Requirements

Minimum System Requirements:

- Windows 10 Pro – 64 bit
- i5 Quad-Core 2.4GHz
- 16GB ram
- TCP/IP 10/100 Ethernet port
- Universal Serial port

Connection Options:

- USB 2.0
- TCP/IP 10/100
- Web access via virtual server