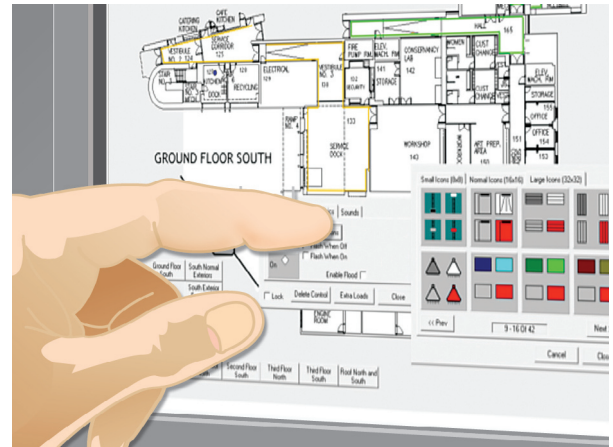


LightLEEDer

InSite-LL

Overview

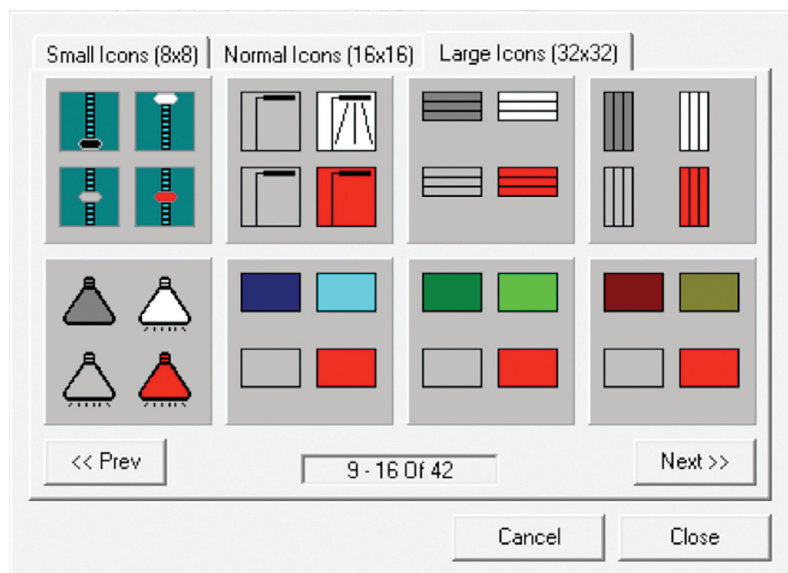
LightLEEDer InSite software provides a Windows-based graphical interface that allows monitoring and control of LightLEEDer panels using icons on custom or standard graphical screens. With a simple click of the mouse, or a push on a touchscreen you can control relays, groups, presets, scenes, dimming outputs, or navigate between screens. Screens are simple bitmap pictures that can depict your facility's floorplan layout or simple color backgrounds. Select from a library of load icons for direct status and control; or select control and navigation buttons with options for customizing. InSite provides extensive timer scheduling and sequencing options. It also supports multiple interfaces, and is equipped with user/password protection that contains 5 levels of user access. InSite Software allows control of 1 to 16 LightLEEDer panel networks, works seamlessly with LightLEEDer Pro panel software, and maintains full time connectivity monitoring with e-mail notification.



Features



Develop Control or Navigation Buttons

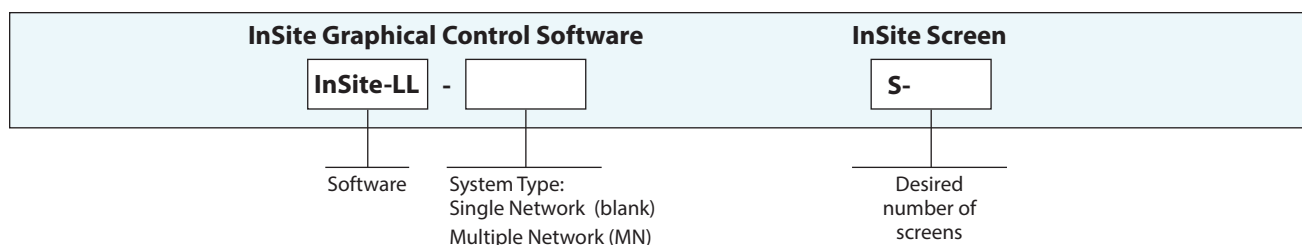


Standard Load Status Icons

Warranty

Six-year limited warranty

Ordering



LightLEEDer

InSite-LL

Physical

InSite Schedule

Schedule Events
 Weekday Office Close
 Edit Copy New
 2 of 4,000 Schedule Events Used

Shared Calendars
 Weekdays Shared Calendar 01
 Edit

Shared Times
 Office Open Time
 Edit

Search
 Relay LL Group Dimmer LL Preset InSite Preset Sequence

Full Year View Purge Expired Schedule Events Close

Shared Calendar Edit

Weekdays Shared Calendar 01 Default Name

Calendar

	S	M	T	W	T	F	S	S	M	T	W	T	F	S	S	M	T	W	T	F	S	S	M	T	W	T	F	S										
Sunday								1	2	3	4	5	6	7	8	9	10	11	12	13	14	15	16	17	18	19	20	21	22	23	24	25	26	27	28	29	30	31
Monday	1	2	3	4	5	6	7	8	9	10	11	12	13	14	15	16	17	18	19	20	21	22	23	24	25	26	27	28	29	30	31							
Tuesday	2	3	4	5	6	7	8	9	10	11	12	13	14	15	16	17	18	19	20	21	22	23	24	25	26	27	28	29	30	31								
Wednesday	3	4	5	6	7	8	9	10	11	12	13	14	15	16	17	18	19	20	21	22	23	24	25	26	27	28	29	30	31									
Thursday	4	5	6	7	8	9	10	11	12	13	14	15	16	17	18	19	20	21	22	23	24	25	26	27	28	29	30	31										
Friday	5	6	7	8	9	10	11	12	13	14	15	16	17	18	19	20	21	22	23	24	25	26	27	28	29	30	31											
Saturday	6	7	8	9	10	11	12	13	14	15	16	17	18	19	20	21	22	23	24	25	26	27	28	29	30	31												

Weekdays Shared Calendar 01

Cancel Close

InSite Schedule

Single Date Sort

Events for 05/20/2019

Corridor Admin - OFF

Edit This Schedule Event

Events By Time

Time	Event	Time	Event
12:00 - 12:59 AM	12:00 - 12:59 AM	10:00 - 10:59 AM	10:00 - 10:59 AM
1:00 - 1:59 AM	1:00 - 1:59 AM	11:00 - 11:59 AM	11:00 - 11:59 AM
2:00 - 2:59 AM	2:00 - 2:59 AM	12:00 - 12:59 PM	12:00 - 12:59 PM
3:00 - 3:59 AM	3:00 - 3:59 AM	1:00 - 1:59 PM	1:00 - 1:59 PM
4:00 - 4:59 AM	4:00 - 4:59 AM	2:00 - 2:59 PM	2:00 - 2:59 PM
5:00 - 5:59 AM	5:00 - 5:59 AM	3:00 - 3:59 PM	3:00 - 3:59 PM
6:00 - 6:59 AM	6:00 - 6:59 AM	4:00 - 4:59 PM	4:00 - 4:59 PM
7:00 - 7:59 AM	7:00 - 7:59 AM	5:00 - 5:59 PM	5:00 - 5:59 PM
8:00 - 8:59 AM	8:00 - 8:59 AM	6:00 - 6:59 PM	6:00 - 6:59 PM
9:00 - 9:59 AM	9:00 - 9:59 AM	7:00 - 7:59 PM	7:00 - 7:59 PM
10:00 - 10:59 AM	10:00 - 10:59 AM	8:00 - 8:59 PM	8:00 - 8:59 PM
11:00 - 11:59 AM	11:00 - 11:59 AM	9:00 - 9:59 PM	9:00 - 9:59 PM

Shared Time 01 Shared Time 09
 Shared Time 02 Shared Time 10
 Shared Time 03 Shared Time 11
 Shared Time 04 Shared Time 12
 Shared Time 05 Shared Time 13
 Shared Time 06 Shared Time 14
 Shared Time 07 Shared Time 15
 Shared Time 08 Shared Time 16

Auto - Sunrise Auto - Sunset

Close

InSite Schedules

Specifications

Programming Capabilities:

- Graphic screens can consist of any bitmap picture in virtually limitless numbers
- Control icons are unlimited per screen and can be chosen from an extensive library
- Icons can be edited at any time to include or exclude relays

Graphical Control and Status:

- Simply point and click on an icon to control relays, groups, presets, scene or dimmers
- Control 0-10V devices from a slider or icon
- Control DMX512 devices directly from the screen
- Control louvers with a click of an icon
- View real-time status of relays, groups, scenes, or presets

Scheduling and Sequencing:

- Extensive calendar-based scheduling for up to 4000 programmable schedules to automatically control relays, groups, scenes, presets or trigger a sequence
- Sequences with up to 16 transitions over a 12-hour period can be used to turn on/off single relays, groups, set a preset or scene

Suggested Minimum System Requirements:

- Windows 10 Pro – 64 bit
- i5 Quad-Core 2.4GHz
- 16GB ram
- TCP/IP 10/100 Ethernet port
- Universal Serial port

Connection Options:

- USB 2.0
- TCP/IP 10/100