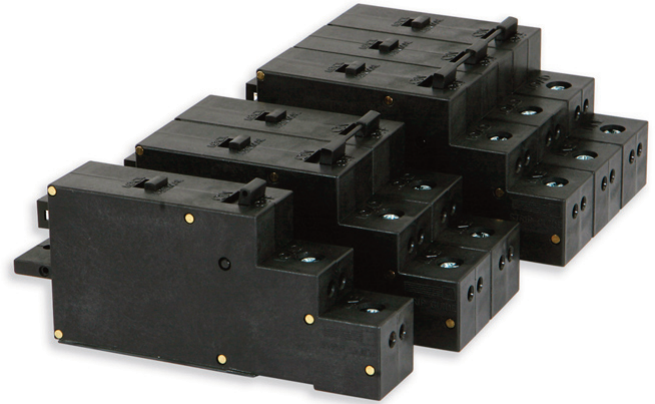


LightLEEDer

Reliant40 Relays

Overview

The Reliant40 relay is designed for durability, flexibility, and ease of use. This relay is a superior relay that employs 4 latching nickel-silver contacts. The relay is available in 1, 2, or 3 pole configurations for controlling 120 VAC to 480 VAC loads. It is UL and C-UL listed and is rated for 120 VAC to 347 VAC per pole with a current rating of up to 40 Amps. This relay carries a high fault SCCR rating of 18,000 Amps @ 347 VAC. It also features a manual toggle switch for ON/OFF activation and a Lock-ON/OFF switch to disable control from the panel electronics. Installation is easy with 1 screw and 1 push-on ribbon connector.



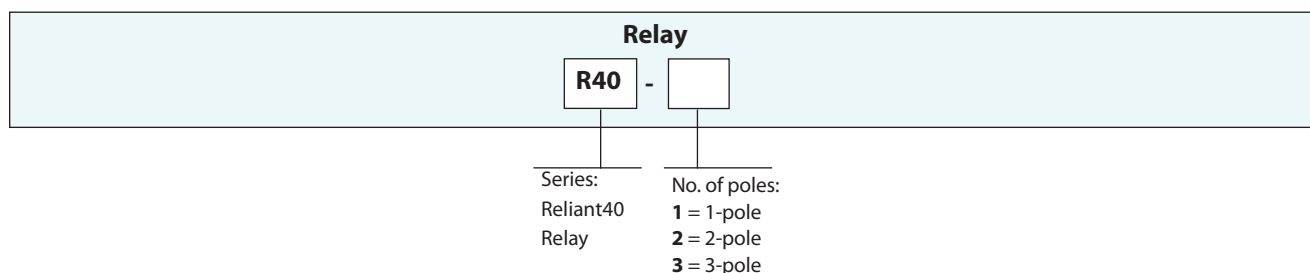
Features

- **Made in the USA**
- **UL and CUL listed**
- **Suitable** for controlling all lighting loads
- **Electronic ballast** high current inrush load rating
- **Relay contacts** consist of 4 nickel-silver contacts designed for high currents
- **Latching** relay holds position without the presence of power, saving energy
- **Plug-load compatible**
- **Relay configurations** available in 1-, 2-, or 3-pole ganged assemblies
- **Manual lever override switch** with highly visible indicator
- **Lock-ON/Lock-OFF** feature disables On or OFF control from the electronics
- **Terminals** consist of 2 line and 2 load connections
- **Screw-actuated wire clamps** for use with 10-12 AWG solid or 8-12 AWG stranded copper wire
- **Easily mounted** - as easy as interfacing a tab and securing with a screw
- **Operates in any position**
- **Wire strip guide** located on the side of the relay

Warranty

Five-year limited warranty

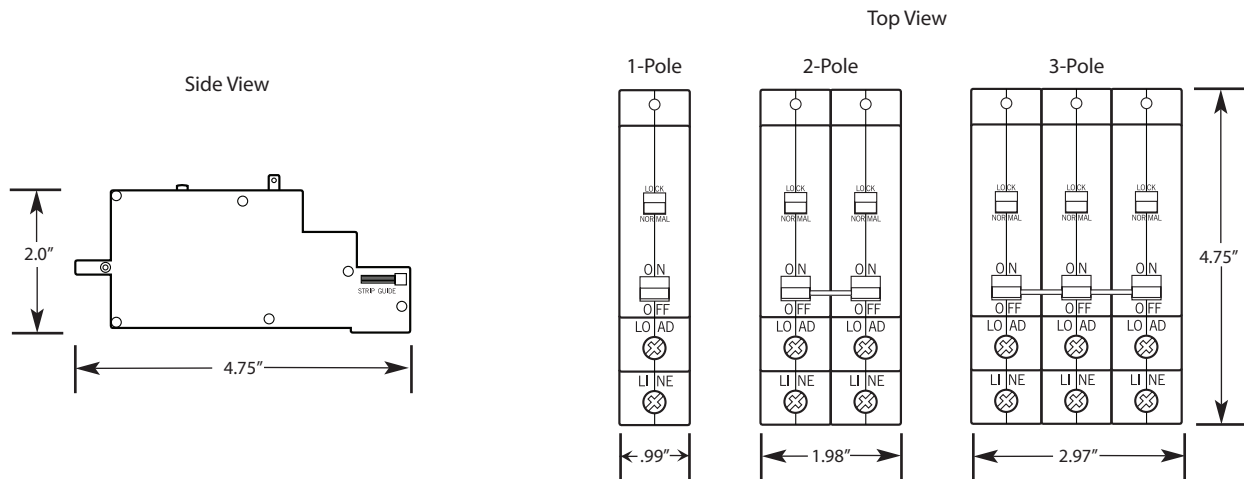
Ordering



LightLEEDer

Reliant40 Relays

Physical



Specifications

Physical:

- .99" Wide x 2.0" High x 4.75" Long (1 pole)
- Accepts 8-12 AWG stranded Cu wire or 10-12 AWG Solid Cu wire
- Easy installation into any panel
- Removable ribbon connector interface
- Clearly marked connection designations

Low Voltage Control:

- 18 to 24 VDC
- Momentary duty rating
- 50 milliseconds minimum activation time
- 50 to 55 Ω coil resistance
- 100mA @ 5 VDC status & disable contacts

Electrical:

- 120, 277 or 347 VAC per pole (controls 208/240/480 loads)
- 40 Amps HID and ballast loads
- 40 Amp resistive loads
- 16 Amp electronic ballast loads (UL's limit)
- 1.5 Hp @ 120VAC motor loads
- 18,000 Symmetrical Amp SCCR @ 347 VAC
- Plug-load compatible

Operating Environment:

- Location: Interior Space
- Operating Temp.: 0° to 60° C
- Humidity: 10% to 90% Non-condensing
- Atmosphere: Non-explosive/corrosive
- Vibration: Stationary

Certifications:

- UL and CUL Listed
- FCC