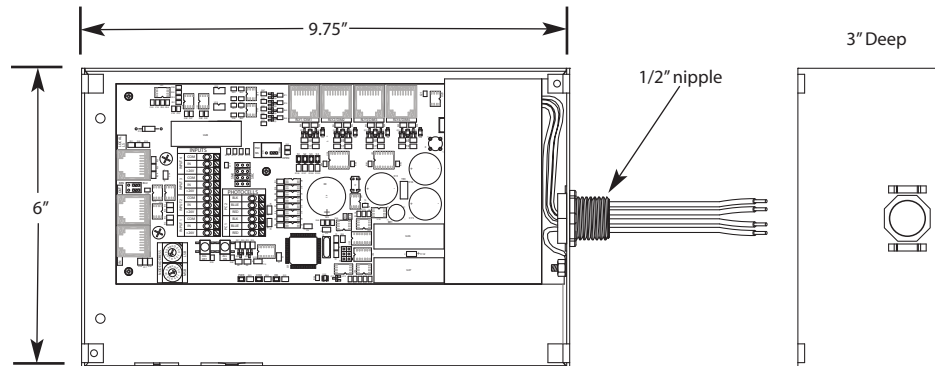


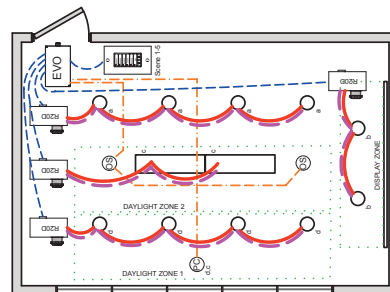
LightLEEDer





LightLEEDer-EVO

Physical



LL-EVO Lighting Application: FC



WIRE LEGEND	
	Line voltage
	0-10V Dimming
	CAT-5e Data cable
	3-Wire Occupancy Sensor or Photo Cell

Bill Of Material:		
Qt.	Product:	Description:
1	LL-EVO	EVO Controller
4	R20D	Remote 20Amp Dimming relay
1	LSG3-WH-5-S	LightSync G3 5-Scene dimming digital switch station.
1	PC-IND	Photo Cell - Indoor.
2	ILC-SWX-221-1	Occupancy sensor Ceiling Dual Tech - 500sf

Specifications

Safeguards:

- Power surge and spike suppression up to 123 volts on the 20VAC power input to controller
- Memory retention for firmware and programming up to 200 years and electrostatic discharge to 4kv
- Real time clock retention 45 days or greater without power
- Galvanically isolation to 1500V for the 0-10VDC dimmer outputs, with revert to 100% on power loss

Physical:

- Enclosure: 9-3/4"x 6"x 3" NEMA 1
- Galvanized steel enclosure and screw cover
- Provided with pre-drilled mounting holes
- High voltage barrier separates Class 2 wiring
- 1/2" nipple for mounting to electrical box
- 6" wire leads for high voltage connections
- Push to connect low voltage terminals
- Color coded labels for easy terminal identification
- RJ45 connectors provide for easy connection
- Enclosure, suitable for plenum mounting

Integrated Interfaces:

- 4 inputs for hardwire switches or occupancy sensors
- Photocell controller for 2 sensor heads or zones
- RJ-45 port for up to 61 ILC CAT-5 devices
- 4 RJ-45 ports for R20 remote relays

Electrical:

- 120/277VAC @.6 amps (120/347VAC Optional)
- Input: 24 VDC (See below for details)
- Dimming: 100mA sink

Powered Devices/Distance/Input Power Draw:

- 4 CAT-5 devices, 400' accumulative feet, 200mA occupancy sensor power
 - 5 CAT-5 devices, 500' accumulative feet, 160mA occupancy sensor power
 - 6 CAT-5 devices, 600' accumulative feet, 120mA occupancy sensor power
 - 7 CAT-5 devices, 700' accumulative feet, 90mA occupancy sensor power
 - 8 CAT-5 devices, 800' accumulative feet, 60mA occupancy sensor power
- Additional LightSync devices can be supported by adding a PSR.*

Operating Environment:

- Location: Interior space
- Operating Temperature: 0° to 50° C
- Humidity: 10% - 90% Non-condensing
- Atmosphere: Non-explosive/corrosive
- Vibration: Stationary

Certifications and Approvals:

- UL and CUL listed
- FCC Part 15
- Title 24
- ASHRAE compliant
- IECC compliant