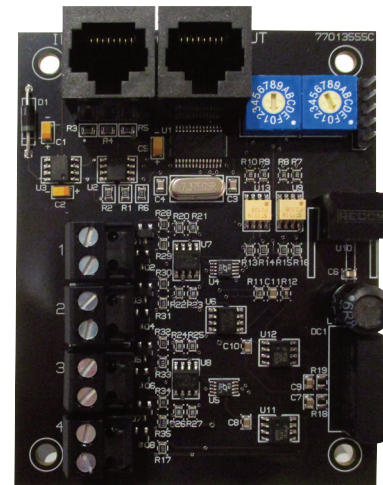


## Overview

The LightSync Digital Isolated Dimming Module is designed for 0-10V device control. This dimmer is galvanically isolated up to 1500V and designed to be used with MC luminary style cable. This module can be installed in the lighting control panel or remotely mounted on the LightSync network. Each of the 4 independent channels can control up to 200 ballasts with 256 steps between 0 and 10V. Outputs are designed to sink voltage up to 100mA per channel. Each output may be programmed to respond to 16 inputs per channel. Upon loss of power, the dimmer outputs will go to 10V or full brightness. The intuitive software provided makes it easy to program and adjust the settings.



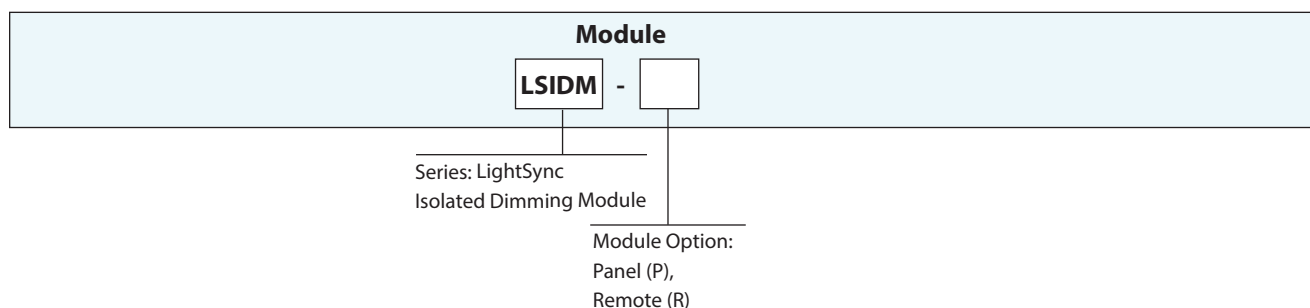
## Features

- **Made in the USA**
- **Digital CAT-5 Ready**
- **4 independent channels** per module provide the flexibility to control up to 4 zones
- **Each output** can control up to 200 typical ballast at .5mA each (sink voltage)
- **Galvanically** isolated up to 1500V
- **Power-On level settings** allows each output to be configured for 0 to 100% levels upon power-up
- **Power loss** to dimmer module sets dimming to full brightness
- **LightSync photocell** tracking programmed directly to output point(s)
- **Each output may be programmed** to respond to 16 LightSync or hardwire inputs. Each input can be programmed to force the output to a preset level, raise or lower at 10% increments and can work in conjunction with a photocell. Inputs can be set to "revert to photocell control" after a period of time that can range from 5 to 600 minutes in 5 minute increments.
- **Fade rate** of 0 to 300 seconds can be programmed for each output
- **Minimum and maximum output levels** can be configured for each output
- **With a DMX512 serial interface**, each output can be controlled by any of the 512 DMX512 signal channels
- **Panel mount (P)** installs directly in the panel
- **Remote mount (R)** provided with 4-11/16" J- box
- **Removable connectors** for easy installation
- **Digitally** addressable

## Warranty

Six-year limited warranty

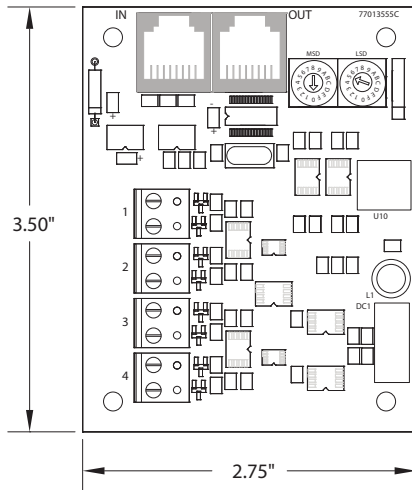
## Ordering



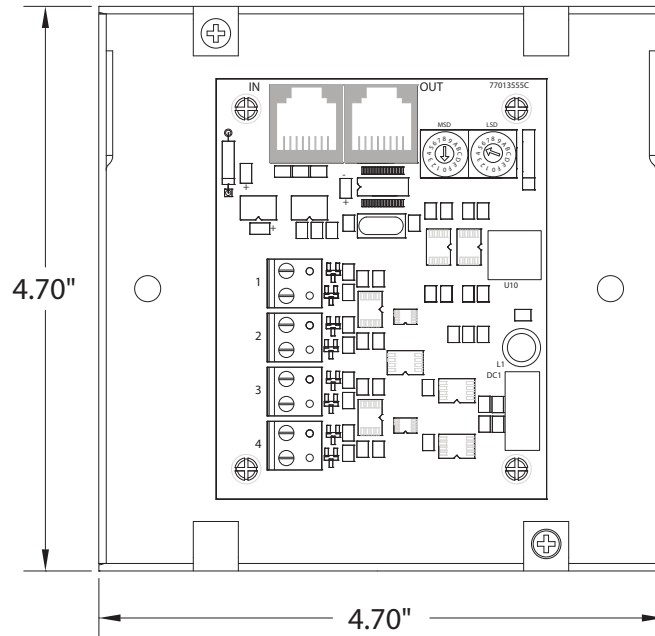
## LightSync Digital

## Isolated Dimming Module

## Physical



Panel Mount



Remote Mount

## Specifications

**Physical:**

- 2.75" Wide X 3.5" High
- Easy non-screw push-to-connect terminals
- Digital addressing switches
- RJ45 connectors for data line connections
- R option provided with 4-11/16" junction box

**Electrical:**

- Powered from the panel or from the LightSync network
- 100mA sink per channel
- 0-10VDC

**Configuration:**

- Software programming
- Directly through keypad

**Operating Environment:**

- Location: Interior space
- Operating Temp.: 0° to 50° C
- Humidity: 10% - 90% Non-condensing
- Atmosphere: Non-explosive/corrosive
- Vibration: Stationary

**Certifications and Approvals:**

- FCC Part 15