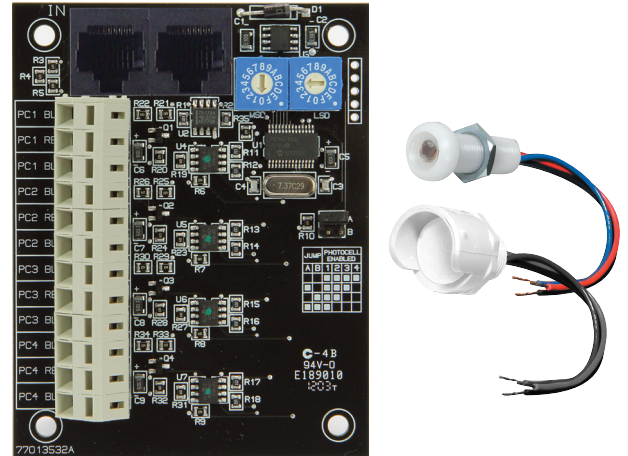


LightSync Digital **Photo Sensor Controller 4**

Overview

The LightSync Digital Photo Sensor 4 controller incorporates a space-saving 4 head controller in 1 module. This LSPSC4 device accepts from 1 to 4 sensors each operated individually or averaged as one. The photocell controller monitors the light levels and transmits the data across the LightSync Digital data line to the lighting control panels. For daylight harvesting each sensor is mapped directly to the dimmer modules to adjust the dimming levels. Each sensor can also be mapped to control relays or relay groups with 8 individual set points for on/off control, sensor inputs incorporate a filter to eliminate false triggering from lightning or other sudden light changes. Compatible with the ILC Indoor and Outdoor sensors.



Features

- **Made in the USA**
- **Digital CAT-5 Ready**
- **Light levels** monitored indoors or outdoors from 0 to 1800 fc
- **Incorporates 4** LightSync photocell controllers in 1 module
- **Configurable** from 1 to 4 photocells
- **Control points** consists of 8 individual On and Off inputs
- **Averaging** capability for sensor levels
- **Dead-band** for each control point
- **Analog to digital** photocell heads
- **Photocell Filter** to eliminate false triggering of loads

- **Digitally addressable** device for a unique address
- **Photocell head connectors** are push-to-connect type
- **Panel mount (P)** installs directly in the panel
- **Remote mount (R)** provided with 4-11/16" J- box
- **Self powered** from the network

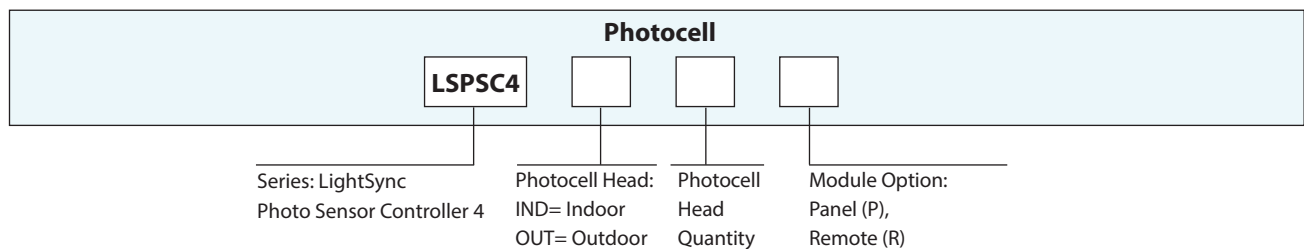
Safeguards:

- Photocell filter to eliminate false triggering of loads
- UV resistant photocell heads
- Encased outdoor photocell head protects sensor from the elements

Warranty

Six-year limited warranty

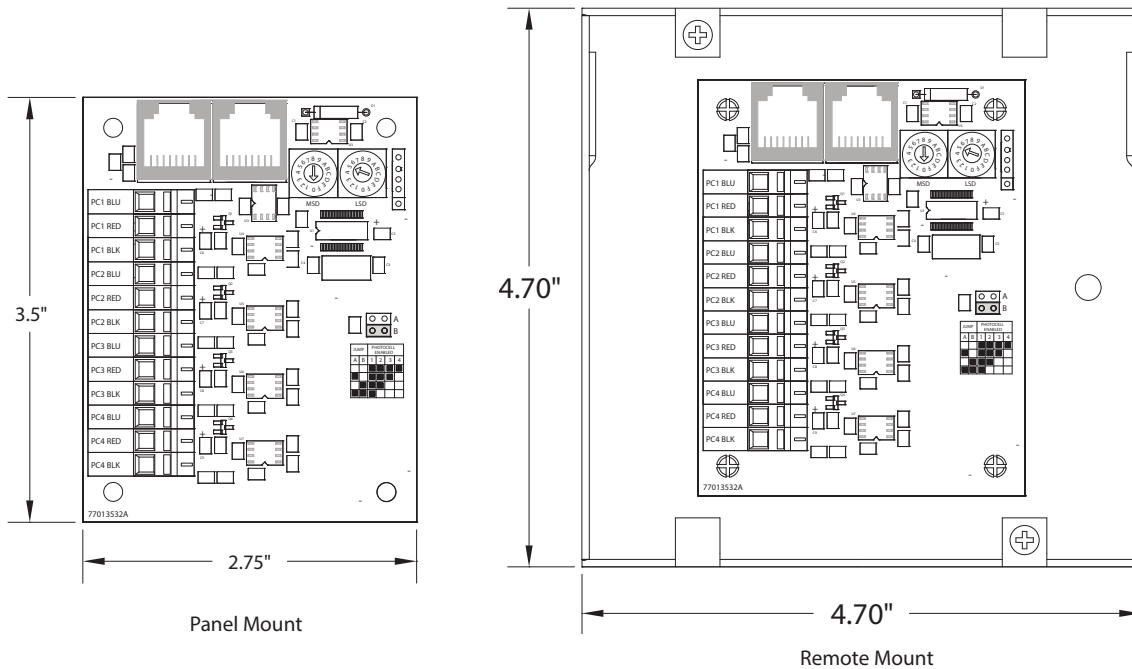
Ordering



LightSync Digital

Photo Sensor Controller 4

Physical



Specifications

Physical:

- 2.75" Wide X 3.5" High
- Easy non-screw push-to-connect terminals
- Digital addressing switches
- Configuration selection jumpers
- RJ45 connectors for data line connection
- R option provided with 4-11/16" junction box

Photocell Heads:

- Outdoor photocell mounts in a 1/2" LB type fitting or junction box
- Indoor photocell mounts to ceiling tile or other structure

Electrical:

- Powered from the panel or the LightSync network

Controller Operating Environment:

- Location: Interior Space
- Operating Temp.: 0° to 50° C
- Humidity: 10% to 90% Non-condensing
- Atmosphere: Non-explosive/corrosive
- Vibration: Stationary

Photocell Operating Environment:

- Location: Interior/Exterior Space
- Operating Temp.: -35° to 50° C
- Humidity: 10% to 100% Condensing
- Atmosphere: Non-explosive/corrosive
- Vibration: Stationary

Certifications:

- UL
- CUL
- FCC Part 15