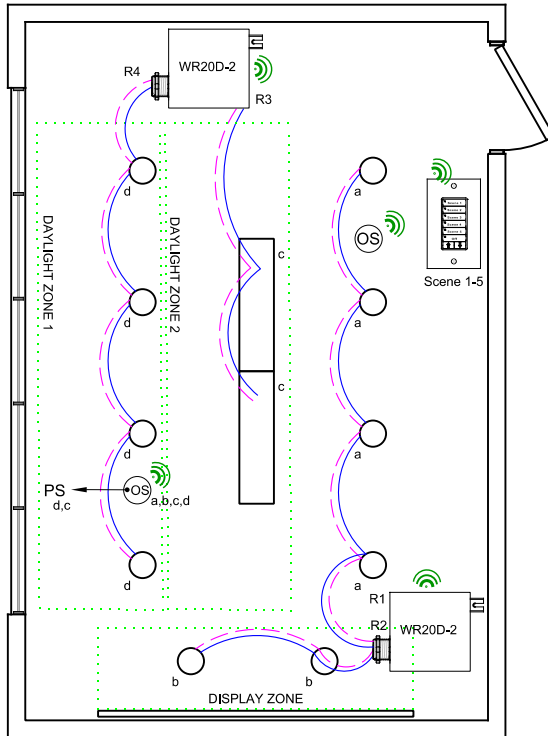


# CONFERENCE ROOM

## ASHRAE DESIGN GUIDE 90.1 - 2013

### 4-Zone Control WR20D-2 Wireless-Direct-Link



**OVERVIEW:**

Wireless devices are wireless-direct-linked to the control relay. Standard switch and sensor control operations are automatic.

**RADIO DISTANCE:**

Wireless radio distance is 100 feet line-of-sight. Radio distance is reduced through a standard construction wall, brick walls will reduce range further. Steel wall coverings, doors, and obstacles such as HVAC steel vent ducts or steel enclosures will block the radio signal.

**SEQUENCE OF OPERATION:**

Lights turn on at digital switch station. Occupancy sensor input set for vacancy-off control, can be changed to on/off with adjustable dim level per zone. Dimmer outputs provide smooth full range control, zones can be set for adjustable start level from occupancy or digital switch. Digital switch station provides Scene recall, capture and dimming. Photo Sensor monitors daylight and limits the maximum light level in the daylight zone, multiple zones can be controlled from one sensor with independent level settings for each.

**ADDITIONAL OPTIONS:**

Wireless devices can be linked to a LLEVO-W wireless controller for networking the controls.

WIRE LEGEND	
	Power 120/277
	0-10V Dimming
	ILC 915Mhz radio

Bill Of Material:		
Qt:	Product:	Description:
2	WR20D-2	Wireless 20Amp, 2-load dimming relay
1	LSG3-W-WH-5S	LightSync G3 Wireless 5-Scene dimming digital switch station.
2	WCS-DT-10	Wireless Ceiling Sensor Dual Tech - 1000sf with daylight dimming photo sensor

**CODE REQUIREMENTS SUPPORTED:**

- Auto-Off from Occupancy sensor
- Multi-Level Dimming control
- Multi-Level Daylight control
- Local Switch control w/dimming