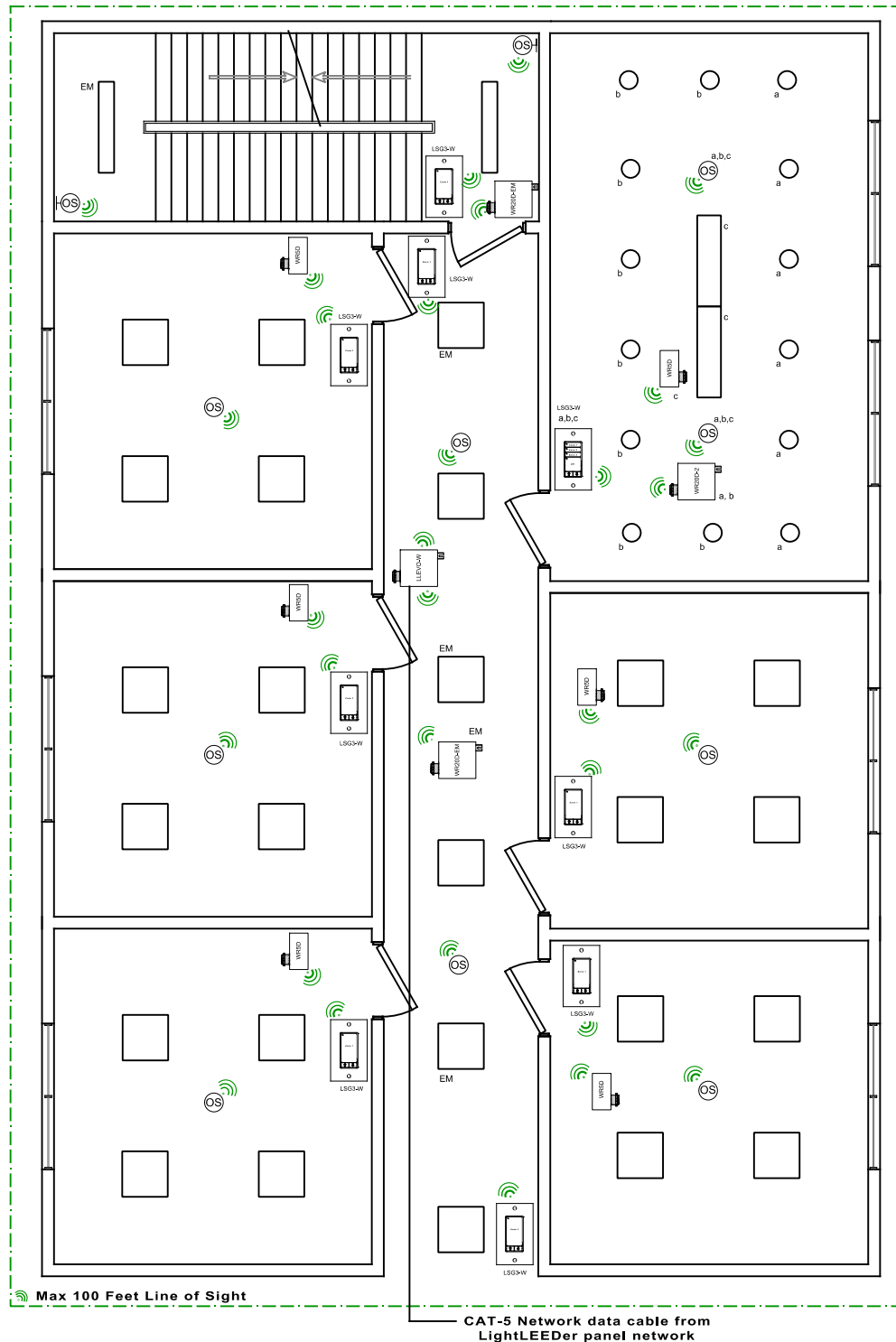


# Office Layout with Wireless-Direct-Link area Switch Control and Networked Linked to a LLEVO-Wireless Controller for Timer and Occupancy Control



## OVERVIEW:

The LightSync Wireless switches are wireless-direct-linked to local wireless relays. Occupancy sensors and relays are linked to the LLEVO-W controller to provide network operation. The LLEVO-W controller is networked to other panels via CAT-5 data cable. All Devices are located within 100 feet direct line-of-sight to the wireless relays or LLEVO-W controller, radio distance will be reduce through walls and steel obstructions.