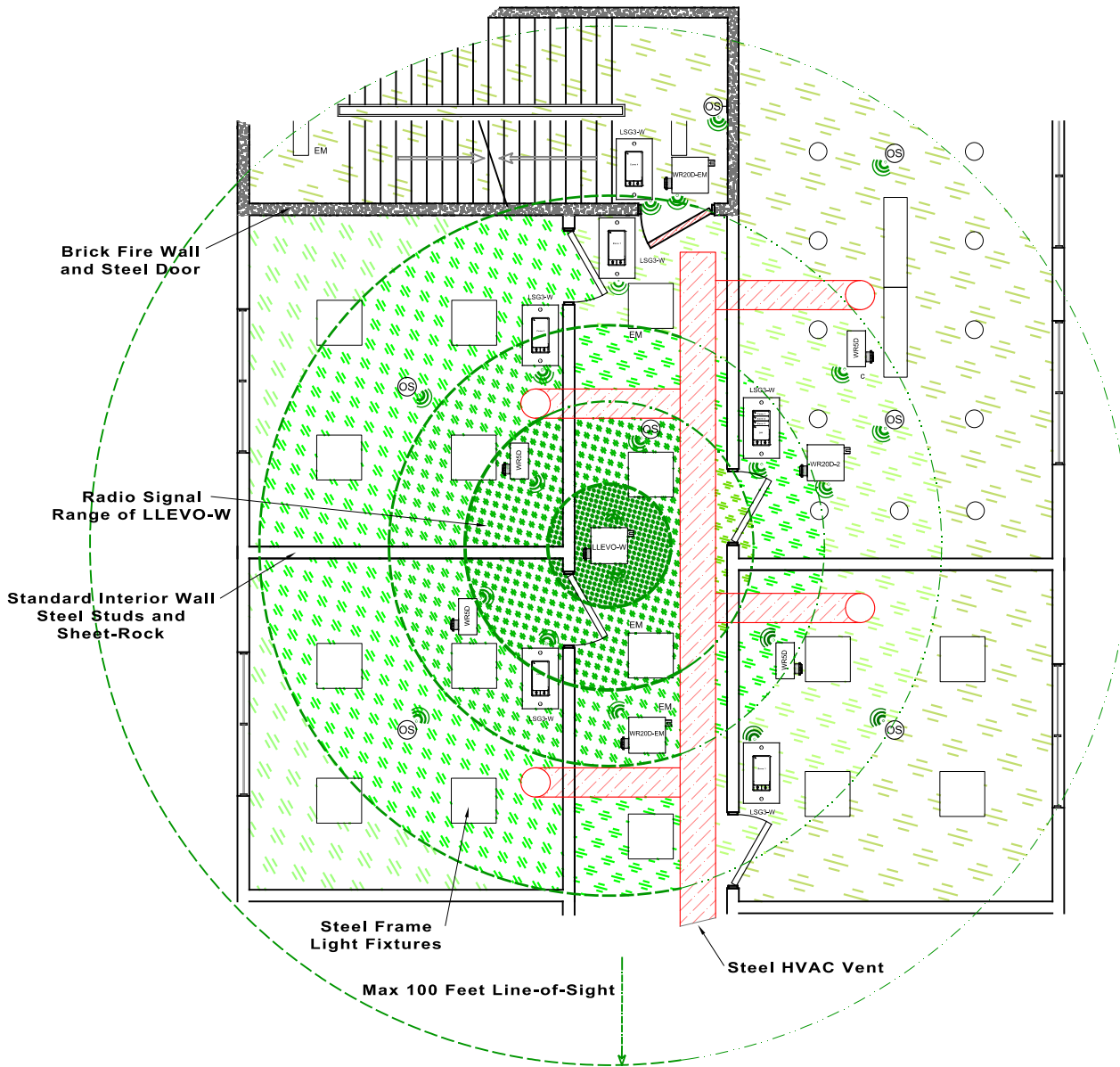


LLEVO-Wireless Radio Signal Distance Detail



OVERVIEW:

The LightSync G3 Wireless switch stations would be wireless-direct-linked to the relays for best dimming performance, the wireless relays and occupancy sensors are then linked to the LLEVO-W controller to provide network operations. For best radio performance all devices are located within 100 feet direct line-of-sight to the LLEVO-W controller, radio distance is reduced through walls and obstructions.

spellcheck

- Install wireless device a minimum of 3 feet away from steel obstructions such as HVAC venting, conduit trays, and steel cabinets.
- Do not mount wireless devices in a steel junction box or enclosure.
- Do not mount wireless devices near computer Wi-Fi transmitters or other wireless equipment that generates RF noise.
- Do not install with steel switch cover plates, or steel wall coverings.
- Standard industrial steel frame and sheetrock construction will cause a reduction in signal strength
- Concrete walls and steel fire doors used in locations like a stairwells will reduce signal strength.